

# GP2S30

## Long Focal Distance Type Photointerrupter with Connector

### ■ Features

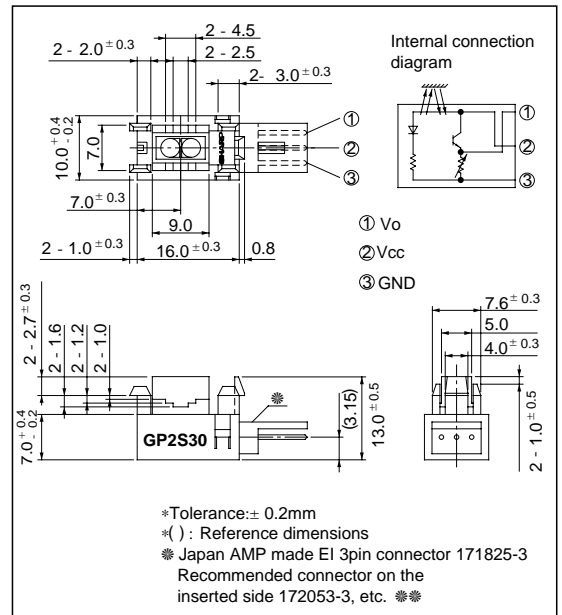
1. Long focal distance  
Detection distance: 3 to 7mm
2. High sensing accuracy by laser  
trimming of resistor
3. 3-pin connector

### ■ Applications

1. Printers
2. Facsimiles
3. Copiers

### ■ Outline Dimensions

(Unit : mm)



\* \* \* Recommended connectors on the inserted side are shown on the below page.

### ■ Absolute Maximum Ratings (Ta = 25°C)

Parameter	Symbol	Rating	Unit
Supply voltage	V <sub>CC</sub>	- 0.5 to + 7	V
Output current	I <sub>O</sub>	I	mA
<sup>#1</sup> Operating temperature	T <sub>opr</sub>	- 20 to + 70	°C
<sup>#1</sup> Storage temperature	T <sub>stg</sub>	- 40 to + 80	°C

\*1 The connector should be plugged in/out and the unit's hook should be used at normal temperature.

### ■ Electro-optical Characteristics

(V<sub>CC</sub> = 5V, Ta = 25°C unless otherwise specified)

Parameter	Symbol	Conditions	MIN.	TYP.	MAX.	Unit
Operating supply voltage	V <sub>CC</sub>	Ta = - 20 to + 70°C	4.5	5.0	5.5	V
Dissipation current	I <sub>CC</sub>	<sup>#2</sup> At detecting, d = 5mm	-	26	35	mA
Low level output voltage	V <sub>OL</sub>	<sup>#3</sup> At non-detecting, d = 5mm	-	0.2	0.8	V
High level output voltage	V <sub>OH</sub>	<sup>#2</sup> At detecting, d = 5mm	2.1	3.0	3.9	V
Response frequency	f	*4	-	-	170	Hz

\*2 At detecting : White PPC paper as a reflective object without external disturbing light in Fig. 1.

\*3 At non-detecting : Black suede tape as a reflective object without external disturbing light in Fig. 1.

\*4 The definition of response frequency is shown in Fig. 2.

Fig. 1 Test Condition for  $V_o$

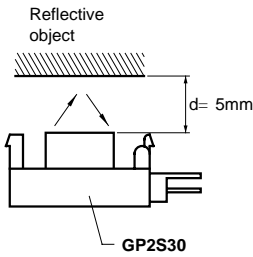
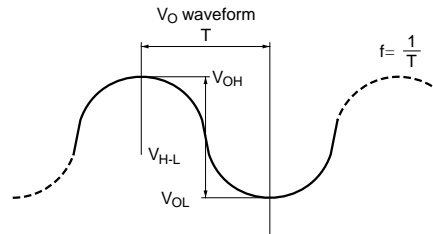
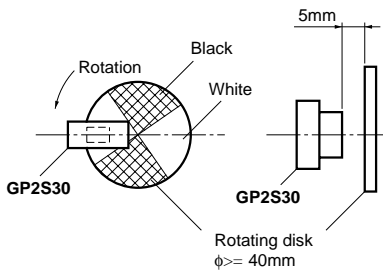


Fig. 2 Definition of Response Frequency



Response frequency: Rotational frequency  $f$  when  $V_{H-L}$  decreases 3dB from DC.

Fig. 3 Relative Output Voltage vs. Ambient Temperature

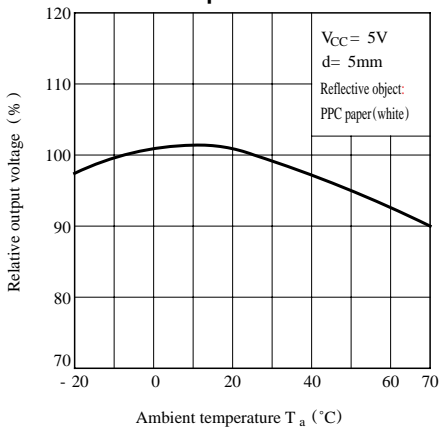
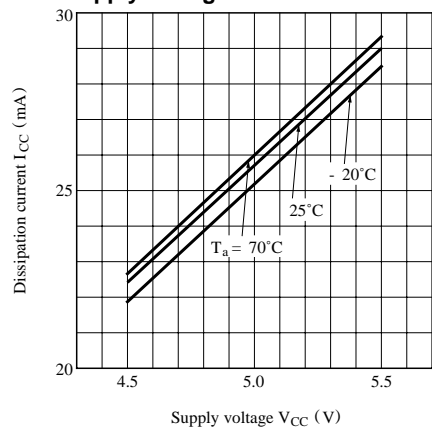
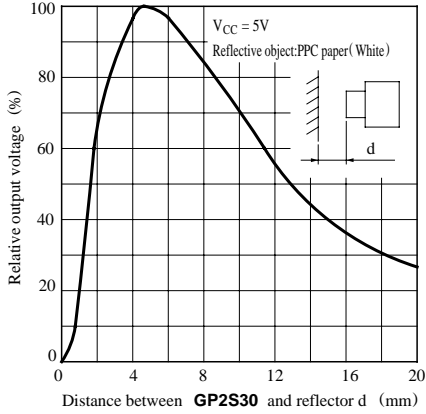


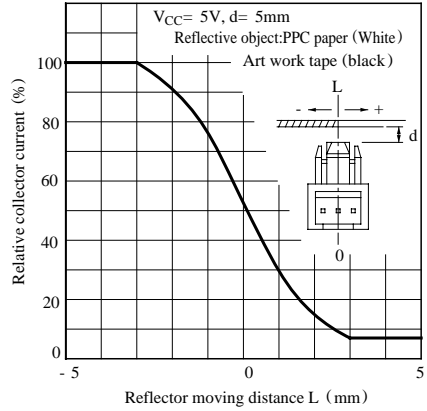
Fig. 4 Dissipation Current vs. Supply Voltage



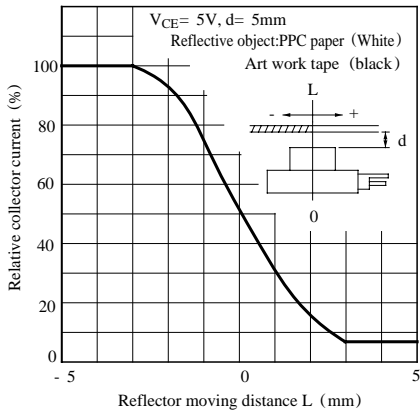
**Fig. 5 Relative Output Voltage vs. Detecting Distance**



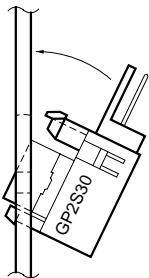
**Fig. 6 Relative Collector Voltage vs. Reflector Moving Distance (1)**



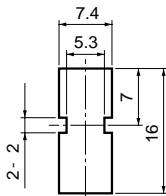
**Fig. 7 Relative Collector Voltage vs. Reflector Moving Distance (2)**



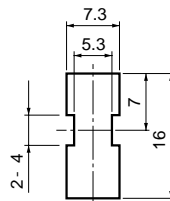
**Recommended Mounting Holes (mm)**



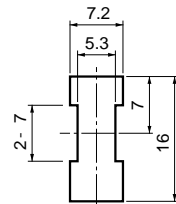
Board thickness  $1.6^{+0.17}_{-0.12}$  mm



Board thickness  $1.2^{+0.17}_{-0.12}$  mm



Board thickness  $1.0^{+0.17}_{-0.12}$  mm



**Mounting Method**

**Recommended Mounting Holes**

## ■ Recommended Connectors on the Inserted Side

### ● JAPAN AMP made EI series connector (standard type)

Housing color	Natural color	Black	Blue	Green	Red
Housing Model No.	171822-3	2-171822-3	4-171822-3	6-171822-3	8-171822-3
Special terminal Model No.	AWG size	Product shape	Material	Model No.	
	AWG 26 to 20	Chain	Brass	170204-1	
			phosphor bronze	170204-2	
		Bulk	Brass	170262-1	
			phosphor bronze	170262-2	
	AWG 30 to 26	Chain	Brass	170205-1	
			phosphor bronze	170205-2	
		Bulk	Brass	170263-1	
phosphor bronze			170263-2		

### ● JAPAN AMP made EI Series connectors (low profile type)

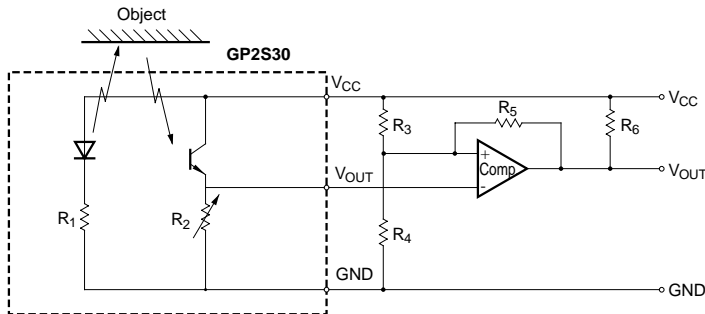
Housing color	Natural color	Black	Blue	Green	Red
Housing Model No.	172142-3	2-172142-3	4-172142-3	6-172142-3	8-172142-3
Special terminal Model No. (Material: phosphor bronze)	AWG size	Product shape	Model No.		
	AWG 26 to 22	Bulk	170369-1		
		Chain	170354-1		
	AWG 30 to 26	Bulk	170370-1		
Chain		170355-1			

### ● JAPAN AMP made EI Series connectors (amp. mass termination)

Housing terminal united type connector	AWG28 (Green)	AWG26 (Natural color)	AWG24 (Black)	AWG22 (Red)
	172054-3	172053-3	172052-3	172051-3

\* Terminal Material: phosphor bronze

## ■ Recommended Circuit



## ■ Precautions for Use

- (1) In this product, the PWB is fixed with a hook, and cleaning solvent may remain inside the case; therefore, dip cleaning or ultrasonic are prohibited.
- (2) Remove dust or stains, using an air blower or a soft cloth moistened in cleaning solvent. However, do not perform the above cleaning using a soft cloth with cleaning solvent in the marking portion.

In this case, use only the following type of cleaning solvent used for wiping off:

Ethyl alcohol, Methyl alcohol, Isopropyl alcohol,

When the cleaning solvents except for specified materials are used, please consult us.

- (3) As for other general cautions, refer to the chapter "Precautions for Use".

### NOTICE

- The circuit application examples in this publication are provided to explain representative applications of SHARP devices and are not intended to guarantee any circuit design or license any intellectual property rights. SHARP takes no responsibility for any problems related to any intellectual property right of a third party resulting from the use of SHARP's devices.
- Contact SHARP in order to obtain the latest device specification sheets before using any SHARP device. SHARP reserves the right to make changes in the specifications, characteristics, data, materials, structure, and other contents described herein at any time without notice in order to improve design or reliability. Manufacturing locations are also subject to change without notice.
- Observe the following points when using any devices in this publication. SHARP takes no responsibility for damage caused by improper use of the devices which does not meet the conditions and absolute maximum ratings to be used specified in the relevant specification sheet nor meet the following conditions:
  - (i) The devices in this publication are designed for use in general electronic equipment designs such as:
    - Personal computers
    - Office automation equipment
    - Telecommunication equipment [terminal]
    - Test and measurement equipment
    - Industrial control
    - Audio visual equipment
    - Consumer electronics
  - (ii) Measures such as fail-safe function and redundant design should be taken to ensure reliability and safety when SHARP devices are used for or in connection with equipment that requires higher reliability such as:
    - Transportation control and safety equipment (i.e., aircraft, trains, automobiles, etc.)
    - Traffic signals
    - Gas leakage sensor breakers
    - Alarm equipment
    - Various safety devices, etc.
  - (iii) SHARP devices shall not be used for or in connection with equipment that requires an extremely high level of reliability and safety such as:
    - Space applications
    - Telecommunication equipment [trunk lines]
    - Nuclear power control equipment
    - Medical and other life support equipment (e.g., scuba).
- Contact a SHARP representative in advance when intending to use SHARP devices for any "specific" applications other than those recommended by SHARP or when it is unclear which category mentioned above controls the intended use.
- If the SHARP devices listed in this publication fall within the scope of strategic products described in the Foreign Exchange and Foreign Trade Control Law of Japan, it is necessary to obtain approval to export such SHARP devices.
- This publication is the proprietary product of SHARP and is copyrighted, with all rights reserved. Under the copyright laws, no part of this publication may be reproduced or transmitted in any form or by any means, electronic or mechanical, for any purpose, in whole or in part, without the express written permission of SHARP. Express written permission is also required before any use of this publication may be made by a third party.
- Contact and consult with a SHARP representative if there are any questions about the contents of this publication.