

PC813 Series

AC Input Type & High Noise Reduction Type Photocoupler

■ Features

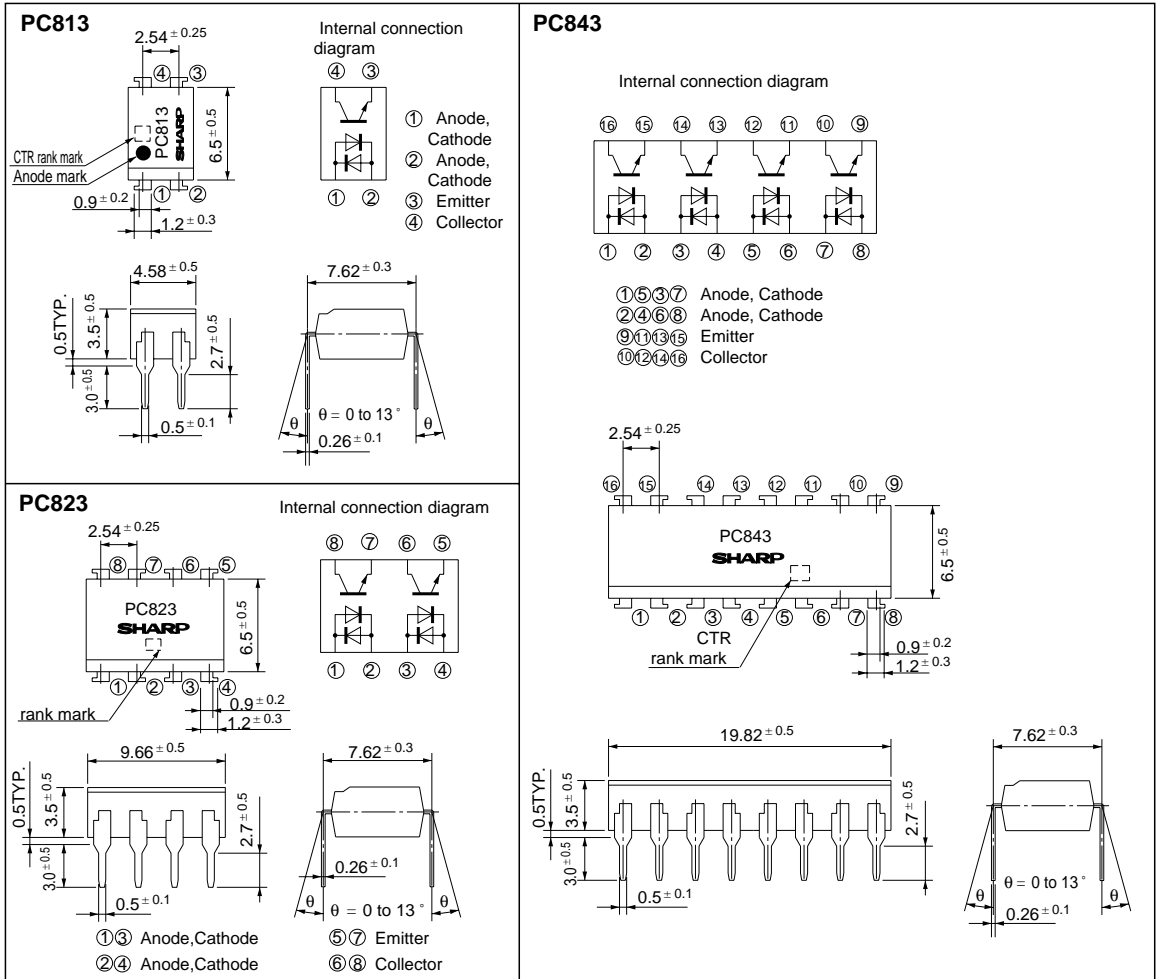
1. High instantaneous common mode rejection voltage
(CM_H : TYP.2kV/ μ s)
2. AC input response
3. Compact dual-in-line package
PC813 (1ch), **PC823** (2ch), **PC843** (4ch)
4. High isolation voltage between input and output
(V_{iso} : 5 000V_{rms})
5. Recognized by UL, file No. E64380

■ Applications

1. Telephones (**PC813**)
2. Programmable controllers
(**PC823/PC843**)
3. System appliances, measuring instruments
4. Signal transmission between circuits of different potentials and impedances

■ Outline Dimensions

(Unit : mm)



Absolute Maximum Ratings

(Ta = 25°C)

Parameter		Symbol	Rating	Unit
Input	Forward current	I _F	± 50	mA
	*1Peak forward current	I _{FM}	± 1	A
	Power dissipation	P	70	mW
Output	Collector-emitter voltage	V _{CEO}	35	V
	Emitter-collector voltage	V _{ECO}	6	V
	Collector current	I _C	50	mA
	Collector power dissipation	P _C	150	mW
Total power dissipation		P _{tot}	200	mW
*2Isolation voltage		V _{iso}	5 000	V _{rms}
Operating temperature		T _{opr}	- 30 to + 100	°C
Storage temperature		T _{stg}	- 55 to + 125	°C
*3Soldering temperature		T _{sol}	260	°C

*1 Pulse width ≤ 100 μs, Duty ratio : 0.001

*2 40 to 60% RH, AC for 1 minute

*3 For 10 seconds

Electro-optical Characteristics

(Ta = 25°C)

Parameter		Symbol	Conditions	MIN.	TYP.	MAX.	Unit	
Input	Forward voltage	V _F	I _F = ± 20mA	-	1.2	1.4	V	
	Peak forward voltage	V _{FM}	I _{FM} = ± 0.5A	-	-	3.0	V	
	Terminal capacitance	C _t	V = 0, f = 1kHz	-	50	250	pF	
Output	Collector dark current	I _{CEO}	V _{CE} = 20V, I _F = 0	-	-	10 ⁻⁷	A	
Transfer characteristics	*4Current transfer ratio	CTR	I _F = ± 1mA, V _{CE} = 5V	20	-	200	%	
	Collector-emitter saturation voltage	V _{CE(sat)}	I _F = ± 20mA, I _C = 1mA	-	0.1	0.2	V	
	Isolation voltage	R _{ISO}	DC500V, 40 to 60% RH	5 x 10 ¹⁰	10 ¹¹	-	Ω	
	Floating capacitance	C _f	V = 0, f = 1MHz	-	0.6	1.0	pF	
	Cut-off frequency	f _c	V _{CE} = 5V, I _C = 2mA, R _L = 100Ω, -3dB	15	80	-	kHz	
	Response time	Rise time	t _r	V _{CE} = 2V, I _C = 2mA R _L = 100Ω	-	4	18	μs
		Fall time	t _f		-	5	20	μs
	*5Instantaneous common mode rejection voltage "Output : high level"		CM _H	V _{CM} = 600V, I _F = 0 V _O = 2V, R _L = 1.9kΩ, V _{CC} = 5V	-	2	-	kV/μs
*5Instantaneous common mode rejection voltage "Output : low level"		CM _L	V _{CM} = 600V, I _F = 16mA V _O = 0.8V, R _L = 1.9kΩ, V _{CC} = 5V	-	2	-	kV/μs	

*4 Classification table of current transfer ratio is shown below

Model No.	Rank Mark	CTR (%)
PC813A	A	50 to 150%
PC823A		
PC843A		
PC813	A or no mark	20 to 200%
PC823		
PC843		

*5 Test Circuit for instantaneous common mode rejection voltage

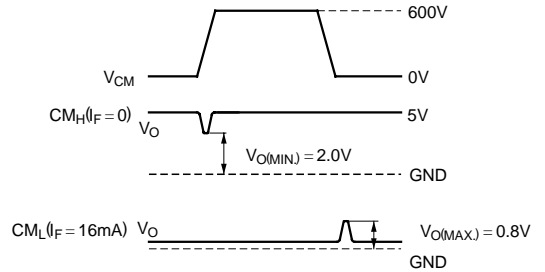
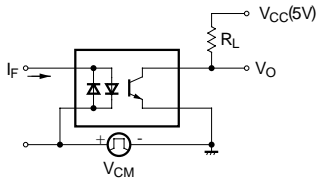


Fig. 1 Forward Current vs. Ambient Temperature

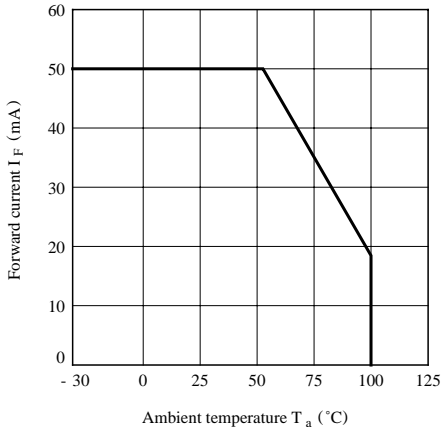


Fig. 2 Collector Power Dissipation vs. Ambient Temperature

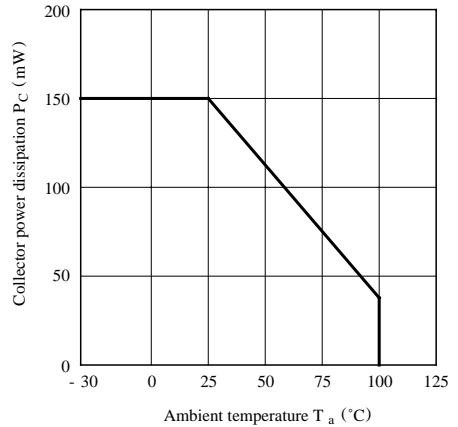


Fig. 3 Peak Forward Current vs. Duty Ratio

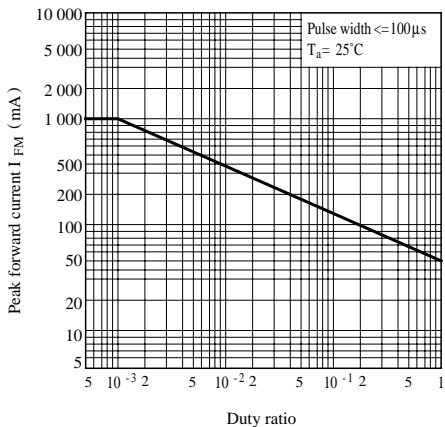


Fig. 4 Forward Current vs. Forward Voltage

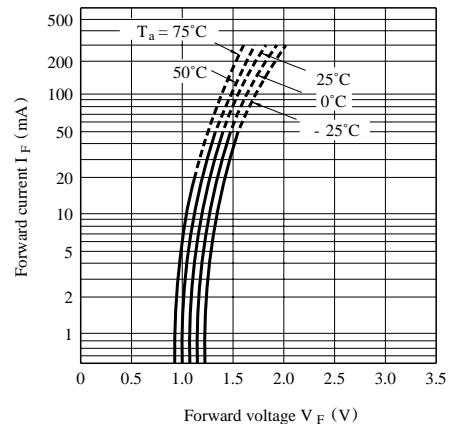


Fig. 5 Current Transfer Ratio vs. Forward Current

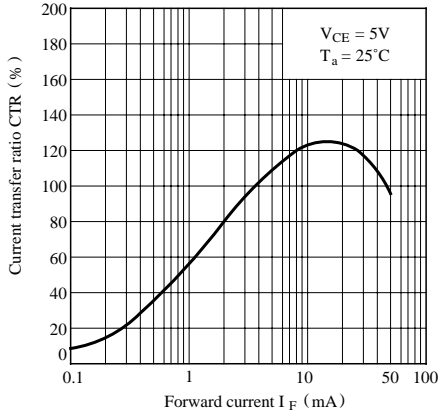


Fig. 6 Collector Current vs. Collector-emitter Voltage

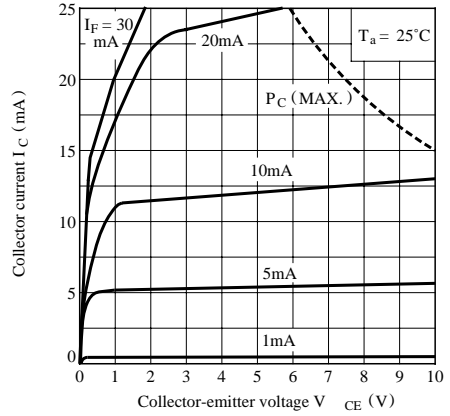


Fig. 7 Relative Current Transfer Ratio vs. Ambient Temperature

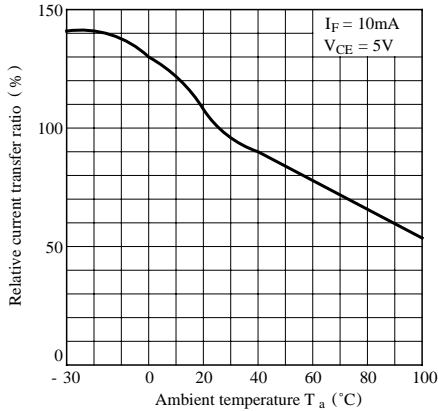


Fig. 8 Collector-emitter Saturation Voltage vs. Ambient Temperature

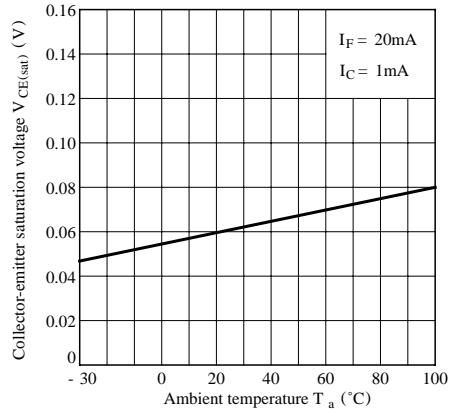


Fig. 9 Collector Dark Current vs. Ambient Temperature

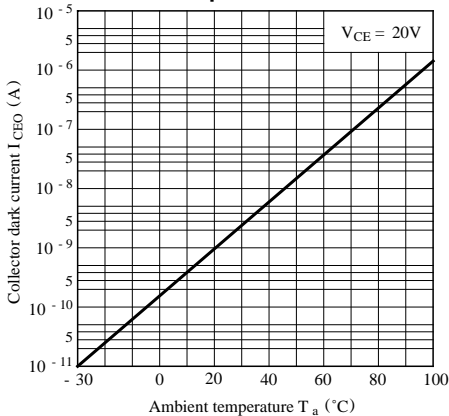


Fig.10 Response Time vs. Load Resistance

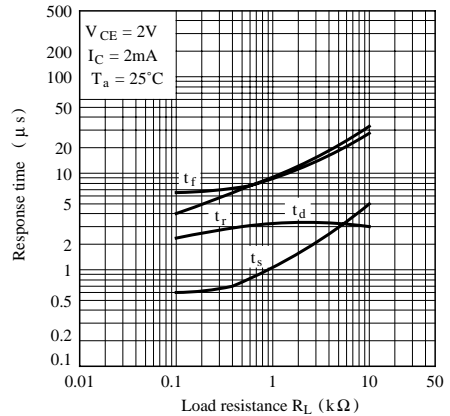
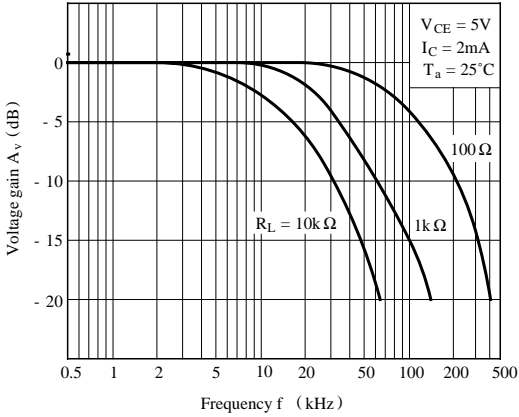


Fig.11 Frequency Response



Test Circuit for Response Time

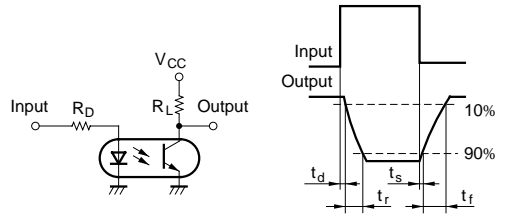
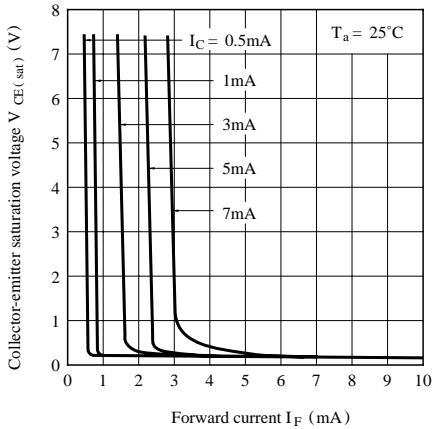
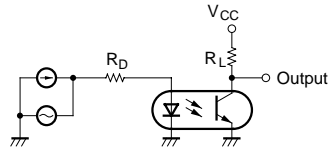


Fig.12 Collector-emitter Saturation Voltage vs. Forward Current



Test Circuit for Frequency Response



● Please refer to the chapter “Precautions for Use”

NOTICE

- The circuit application examples in this publication are provided to explain representative applications of SHARP devices and are not intended to guarantee any circuit design or license any intellectual property rights. SHARP takes no responsibility for any problems related to any intellectual property right of a third party resulting from the use of SHARP's devices.
- Contact SHARP in order to obtain the latest device specification sheets before using any SHARP device. SHARP reserves the right to make changes in the specifications, characteristics, data, materials, structure, and other contents described herein at any time without notice in order to improve design or reliability. Manufacturing locations are also subject to change without notice.
- Observe the following points when using any devices in this publication. SHARP takes no responsibility for damage caused by improper use of the devices which does not meet the conditions and absolute maximum ratings to be used specified in the relevant specification sheet nor meet the following conditions:
 - (i) The devices in this publication are designed for use in general electronic equipment designs such as:
 - Personal computers
 - Office automation equipment
 - Telecommunication equipment [terminal]
 - Test and measurement equipment
 - Industrial control
 - Audio visual equipment
 - Consumer electronics
 - (ii) Measures such as fail-safe function and redundant design should be taken to ensure reliability and safety when SHARP devices are used for or in connection with equipment that requires higher reliability such as:
 - Transportation control and safety equipment (i.e., aircraft, trains, automobiles, etc.)
 - Traffic signals
 - Gas leakage sensor breakers
 - Alarm equipment
 - Various safety devices, etc.
 - (iii) SHARP devices shall not be used for or in connection with equipment that requires an extremely high level of reliability and safety such as:
 - Space applications
 - Telecommunication equipment [trunk lines]
 - Nuclear power control equipment
 - Medical and other life support equipment (e.g., scuba).
- Contact a SHARP representative in advance when intending to use SHARP devices for any "specific" applications other than those recommended by SHARP or when it is unclear which category mentioned above controls the intended use.
- If the SHARP devices listed in this publication fall within the scope of strategic products described in the Foreign Exchange and Foreign Trade Control Law of Japan, it is necessary to obtain approval to export such SHARP devices.
- This publication is the proprietary product of SHARP and is copyrighted, with all rights reserved. Under the copyright laws, no part of this publication may be reproduced or transmitted in any form or by any means, electronic or mechanical, for any purpose, in whole or in part, without the express written permission of SHARP. Express written permission is also required before any use of this publication may be made by a third party.
- Contact and consult with a SHARP representative if there are any questions about the contents of this publication.