

PC3H2/PC3Q62

High Resistance to Noise, Half Pitch Photocoupler

■ Features

- Half pitch surface mount type for high density mounting
(Lead pitch : 1.27 mm)
- High resistance to noise due to high common mode rejection voltage (CMR : MIN.10kV/ μ s)
- Soldering reflow type (230°C, for 30seconds)
- High temperature tested model
- Taping package
 - PC3H2** (1ch)
 - PC3Q62** (4ch)
- Recognized by UL, file No. E64380

■ Applications

- Programmable controllers

■ Package Specifications

Model No.	Package specification
PC3H2	Taping reel diameter 330mm (3 000pcs)
PC3Q62	Taping reel diameter 330mm (1 000pcs)

■ Absolute Maximum Ratings (Ta=25°C)

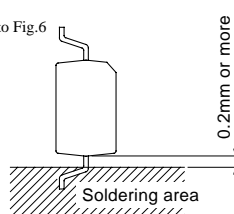
	Parameter	Symbol	Rating	Unit
Input	*1 Forward current	I _F	50	mA
	*2 Peak forward current	I _{FM}	1	A
	Reverse voltage	V _R	6	V
Output	*1 Power dissipation	P	70	mW
	*1 Collector-emitter voltage	V _{CEO}	70	V
	Emitter-collector voltage	V _{ECO}	6	V
	Collector current	I _C	50	mA
	*1 Collector dissipation	P _C	150	mW
	*1 Total power dissipation	P _{tot}	170	mW
	Operating temperature	T _{opr}	-30 to +100	°C
	Tstg Storage temperature	T _{stg}	-40 to +125	°C
*3 Viso Isolation voltage	V _{iso}	2.5	kV _{rms}	
*4 Soldering temperature	T _{SOL}	260	°C	

*1 The derating factors of absolute maximum ratings due to ambient temperature are shown in Fig.2 to 5

*2 Pulse width<=100 μ s, Duty ratio:0.01, Refer to Fig.6

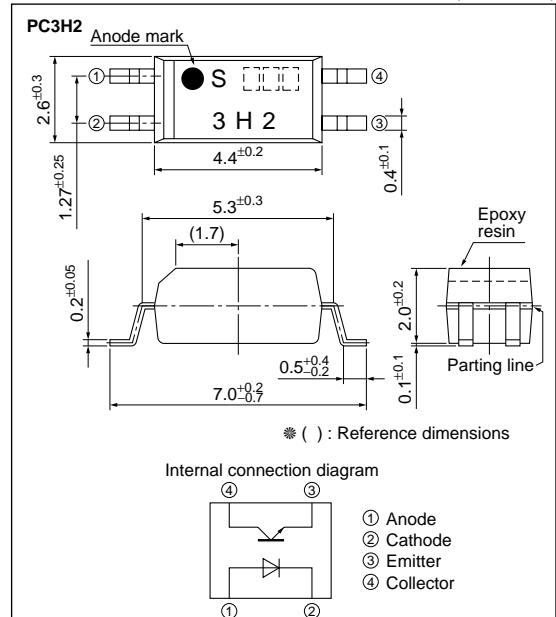
*3 AC for 1min., 40 to 60% RH, f=60Hz

*4 For 10s

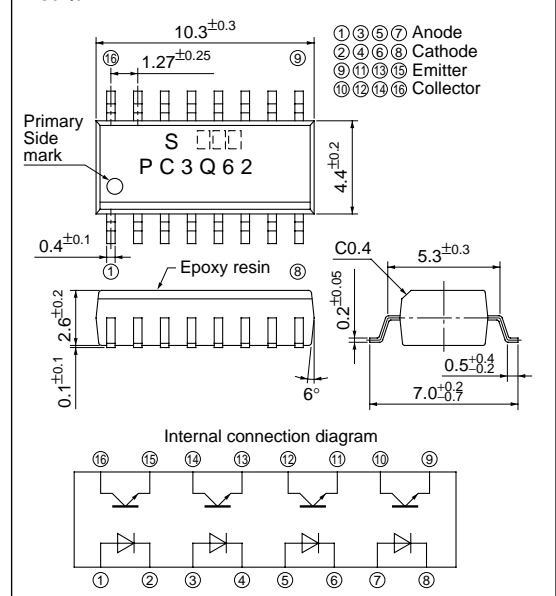


■ Outline Dimensions

(Unit : mm)



PC3Q62



Electro-optical Characteristics

(Ta=25°C)

Parameter		Symbol	Conditions	MIN.	TYP.	MAX.	Unit								
Input	Forward voltage	V_F	$I_F=20mA$	-	1.2	1.4	V								
	Reverse current	I_R	$V_R=4V$	-	-	10	μA								
	Terminal capacitance	C_t	$V=0, f=1kHz$	-	30	250	pF								
Output	Collector dark current	<table border="1"> <tr> <td>PC3H2</td> <td rowspan="2">I_{CEO}</td> <td>$V_{CE}=50V, I_F=0$</td> <td rowspan="2">-</td> <td rowspan="2">-</td> <td rowspan="2">100</td> <td rowspan="2">nA</td> </tr> <tr> <td>PC3Q62</td> <td>$V_{CE}=20V, I_F=0$</td> </tr> </table>	PC3H2	I_{CEO}	$V_{CE}=50V, I_F=0$	-	-	100	nA	PC3Q62	$V_{CE}=20V, I_F=0$				
			PC3H2		I_{CEO}					$V_{CE}=50V, I_F=0$	-	-	100	nA	
	PC3Q62	$V_{CE}=20V, I_F=0$													
Collector-emitter breakdown voltage	BV_{CEO}	$I_C=0.1mA, I_F=0$	70	-	-	V									
	Emitter-collector breakdown voltage	BV_{ECO}	$I_E=10\mu A, I_F=0$	6	-	-	V								
Transfer characteristics	Collector current	I_C	$I_F=1mA, V_{CE}=5V$	0.2	-	4.0	mA								
	Collector-emitter saturation voltage	$V_{CE(sat)}$	$I_F=20mA, I_C=1mA$	-	0.1	0.2	V								
	Isolation resistance	R_{ISO}	DC500V 40 to 60%RH	5×10^{10}	1×10^{11}	-	Ω								
	Floating capacitance	C_f	$V=0, f=1MHz$	-	0.6	1.0	pF								
	Response time	Rise time	t_r	$V_{CE}=2V, I_C=2mA, R_L=100\Omega$	-	4	18	μs							
		Fall time	t_f		-	3	18	μs							
*5 Common mode rejection voltage		CMR	Ta=25°C, RL=470Ω VCM=1.5kV(peak) IF=0mA, VCC=9V, Vnp=100mV	10	-	-	kV/ μs								

*5 Refer to Fig.1

Fig.1 Test Circuit for Common Mode Rejection Voltage

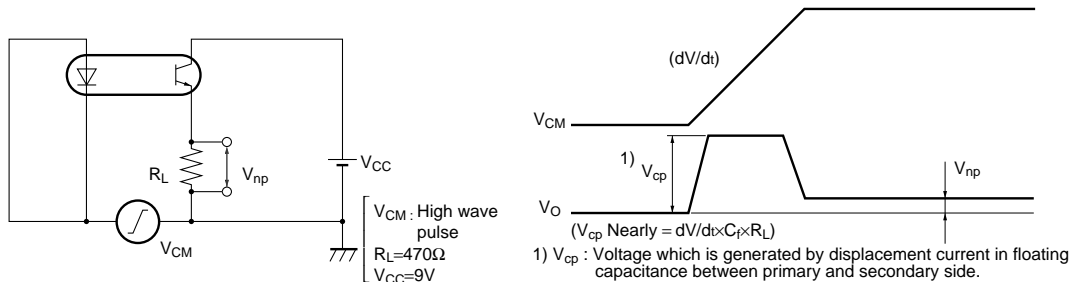


Fig.2 Forward Current vs. Ambient Temperature

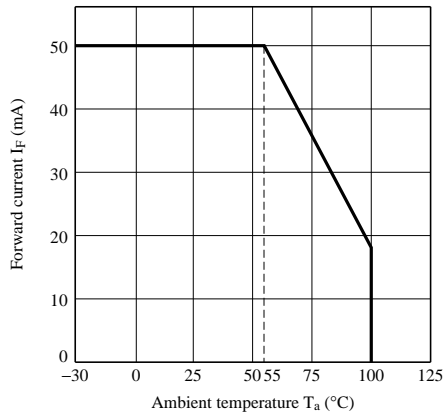


Fig.3 Diode Power Dissipation vs. Ambient Temperature

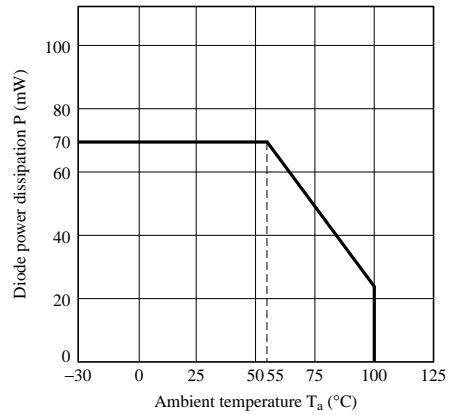


Fig.4 Collector Power Dissipation vs. Ambient Temperature

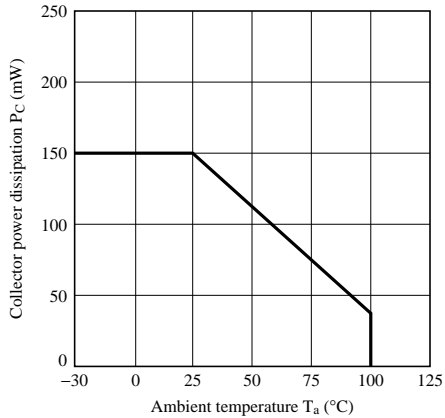


Fig.5 Total Power Dissipation vs. Ambient Temperature

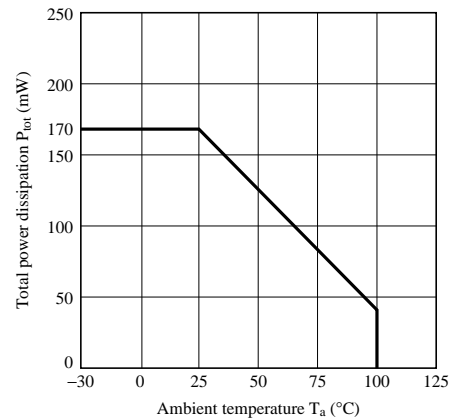


Fig.6 Peak Forward Current vs. Duty Ratio

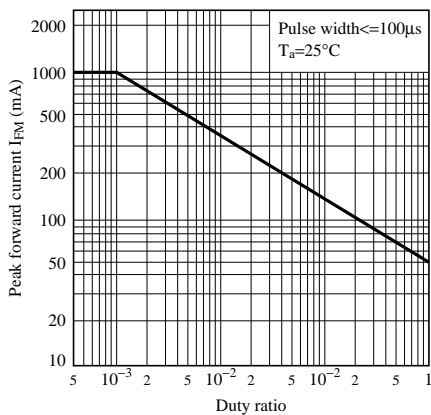


Fig.7 Forward Current vs. Forward Voltage

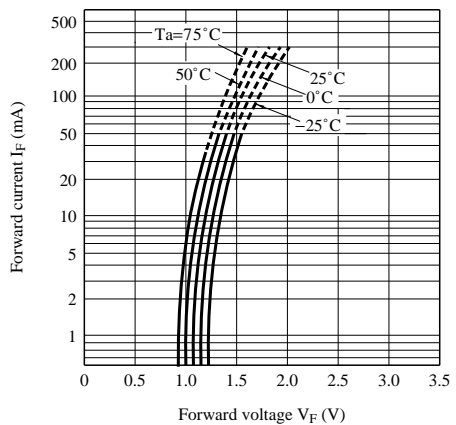


Fig.8 Current Transfer Ratio vs. Forward Current

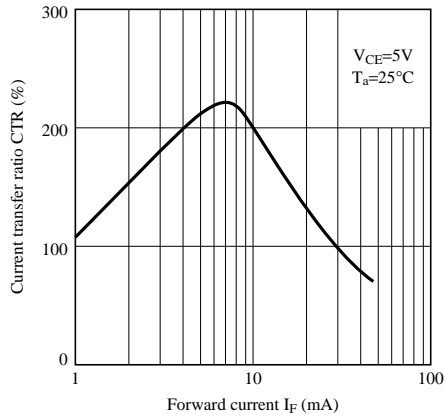


Fig.9 Collector Current vs. Collector-emitter Voltage

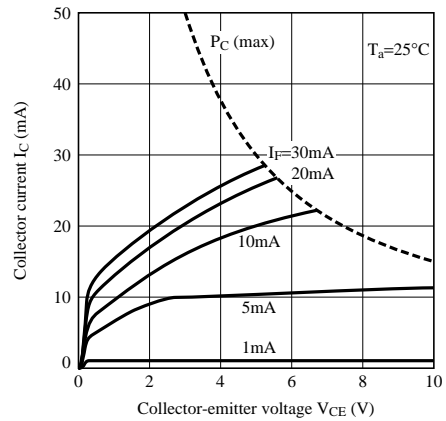


Fig.10 Relative Current Transfer Ratio vs. Ambient Temperature

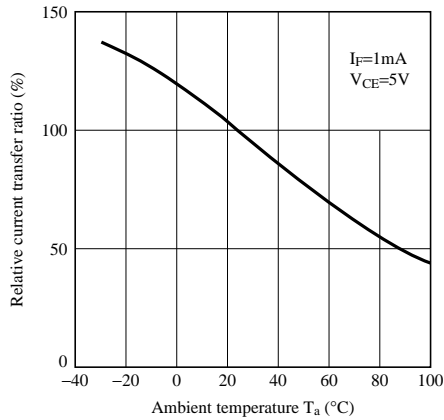


Fig.11 Collector-emitter Saturation Voltage vs. Ambient Temperature

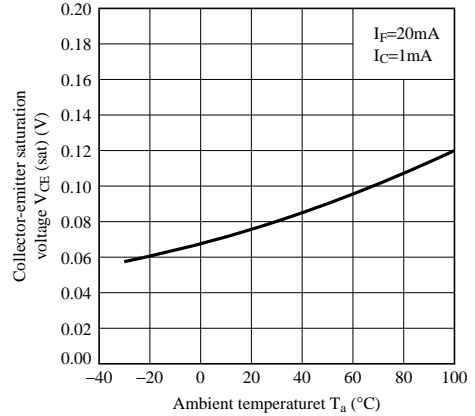


Fig.12 Collector Dark Current vs. Ambient Temperature

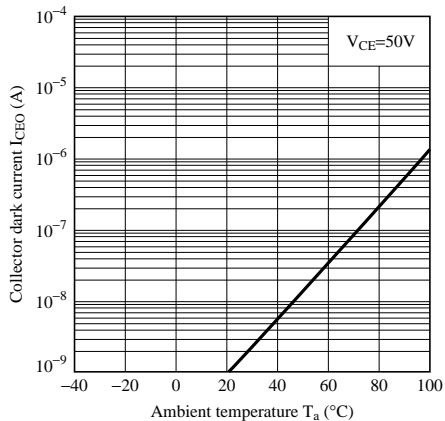


Fig.13 Response Time vs. Load Resistance

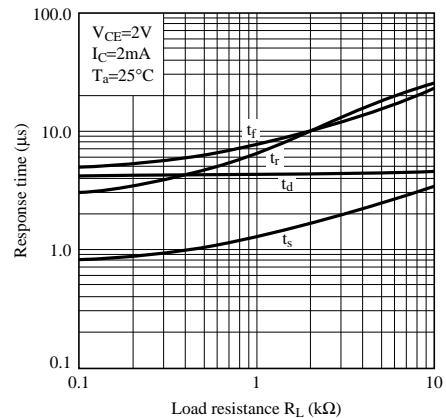


Fig.14 Test Circuit for Response Time

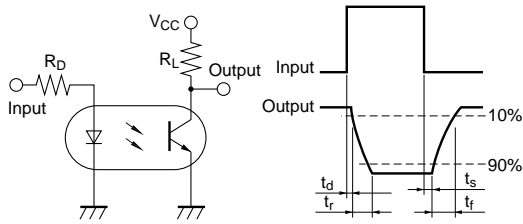


Fig.15 Voltage Gain vs Frequency

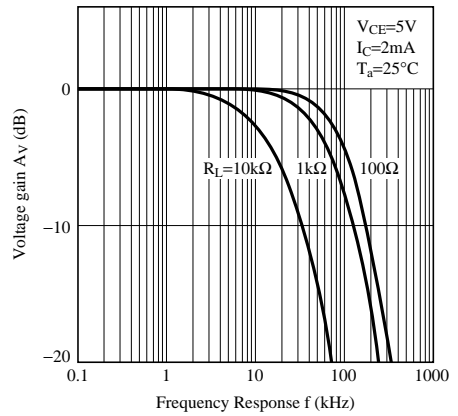


Fig.16 Collector-emitter Saturation Voltage vs. Forward Current

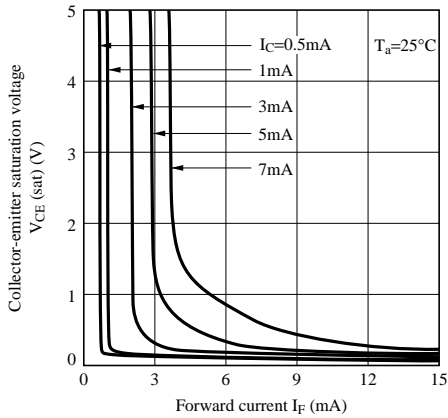
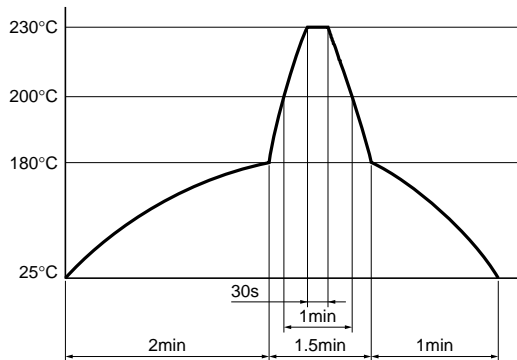


Fig.17 Reflow Soldering

Only one time soldering is recommended within the temperature profile shown below.



NOTICE

- The circuit application examples in this publication are provided to explain representative applications of SHARP devices and are not intended to guarantee any circuit design or license any intellectual property rights. SHARP takes no responsibility for any problems related to any intellectual property right of a third party resulting from the use of SHARP's devices.
- Contact SHARP in order to obtain the latest device specification sheets before using any SHARP device. SHARP reserves the right to make changes in the specifications, characteristics, data, materials, structure, and other contents described herein at any time without notice in order to improve design or reliability. Manufacturing locations are also subject to change without notice.
- Observe the following points when using any devices in this publication. SHARP takes no responsibility for damage caused by improper use of the devices which does not meet the conditions and absolute maximum ratings to be used specified in the relevant specification sheet nor meet the following conditions:
 - (i) The devices in this publication are designed for use in general electronic equipment designs such as:
 - Personal computers
 - Office automation equipment
 - Telecommunication equipment [terminal]
 - Test and measurement equipment
 - Industrial control
 - Audio visual equipment
 - Consumer electronics
 - (ii) Measures such as fail-safe function and redundant design should be taken to ensure reliability and safety when SHARP devices are used for or in connection with equipment that requires higher reliability such as:
 - Transportation control and safety equipment (i.e., aircraft, trains, automobiles, etc.)
 - Traffic signals
 - Gas leakage sensor breakers
 - Alarm equipment
 - Various safety devices, etc.
 - (iii) SHARP devices shall not be used for or in connection with equipment that requires an extremely high level of reliability and safety such as:
 - Space applications
 - Telecommunication equipment [trunk lines]
 - Nuclear power control equipment
 - Medical and other life support equipment (e.g., scuba).
- Contact a SHARP representative in advance when intending to use SHARP devices for any "specific" applications other than those recommended by SHARP or when it is unclear which category mentioned above controls the intended use.
- If the SHARP devices listed in this publication fall within the scope of strategic products described in the Foreign Exchange and Foreign Trade Control Law of Japan, it is necessary to obtain approval to export such SHARP devices.
- This publication is the proprietary product of SHARP and is copyrighted, with all rights reserved. Under the copyright laws, no part of this publication may be reproduced or transmitted in any form or by any means, electronic or mechanical, for any purpose, in whole or in part, without the express written permission of SHARP. Express written permission is also required before any use of this publication may be made by a third party.
- Contact and consult with a SHARP representative if there are any questions about the contents of this publication.