

●Characteristics

Parameter	Symbol	Typ.	Unit
Effective scanning width	—	210	mm
Primary scan dot density	—	8	pixel / mm
Total dot number	—	1728	dots
Power supply voltage	V _{DD}	5	V
Scanning speed	SLT	5	ms / line
Clock frequency	CLK	500	kHz
Maximum dynamic range	VRMax.	1.6	V
Minimum dynamic range	VRMin.	0.84	V
Dark output	V _{od}	0~300	mV
Operating temperature	—	5~45	°C

●Pin assignments

No.	Circuit	I / O	Functions
1	Ao	O	Analog output
2	GND	I	Ground
3	V _{DD}	I	Power supply
4	SI	I	Serial-in
5	CLK	I	Clock
6	GLED	I	LED ground
7	VLED	I	LED power supply

●Timing chart

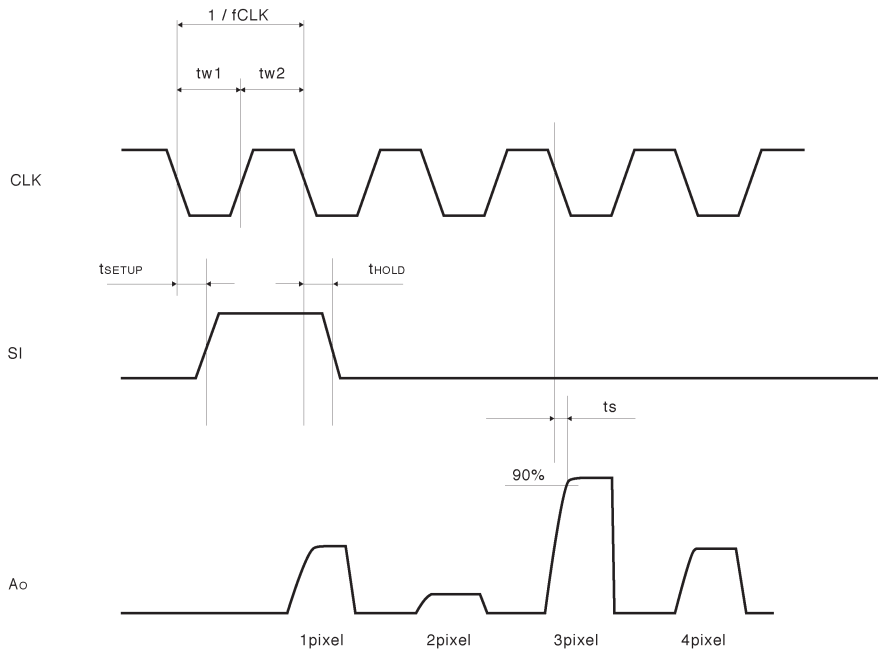


Fig.1

●Equivalent circuit

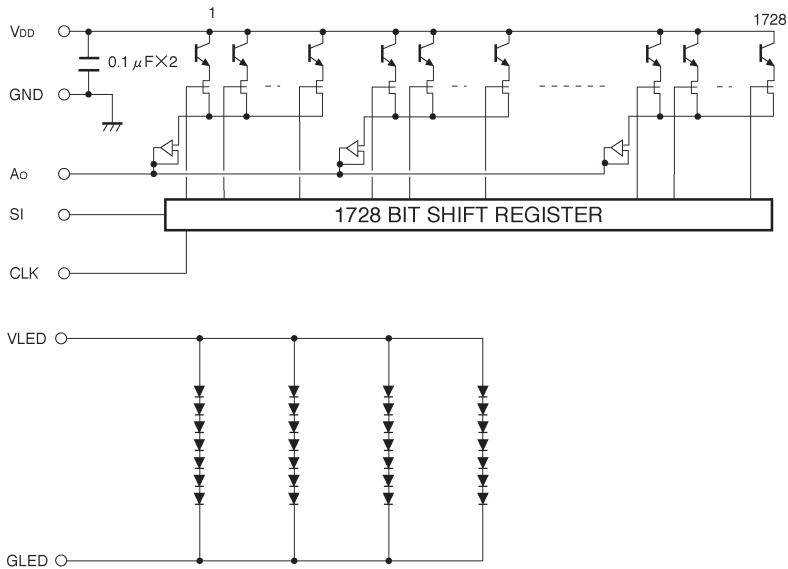


Fig.2