

## LM4880 Boomer® Audio Power Amplifier Series

### Dual 200 mW Audio Power Amplifier with Shutdown Mode

#### General Description

The LM4880 is a dual audio power amplifier capable of delivering 200 mW of continuous average power to an  $8\Omega$  load with less than 0.1% (THD + N) using a 5V power supply.

Boomer audio power amplifiers were designed specifically to provide high quality output power with a minimal amount of external components using surface mount packaging. Since the LM4880 does not require bootstrap capacitors or snubber networks, it is optimally suited for low-power portable systems.

The LM4880 features an externally controlled, low-power consumption shutdown mode, as well as an internal thermal shutdown protection mechanism.

The unity-gain stable LM4880 can be configured by external gain-setting resistors.

#### Key Specifications

- THD + N at 200 mW continuous average output power into  $8\Omega$  0.1% (max)
- THD + N at 75 mW continuous average output power into  $32\Omega$  0.1% (max)
- Shutdown Current 0.7  $\mu\text{A}$  (typ)

#### Features

- No bootstrap capacitors, or snubber circuits are necessary
- Small Outline (SO) packaging
- Unity-gain stable
- External gain configuration capability

#### Applications

- Headphone Amplifier
- Personal Computers
- CD-ROM Players

#### Typical Application

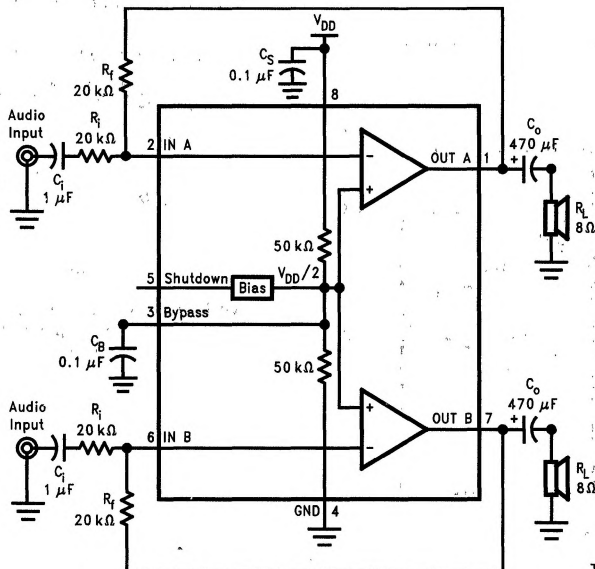
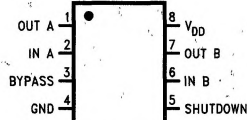


FIGURE 1. Typical Audio Amplifier Application Circuit

#### Connection Diagram

##### Small Outline Package



TL/H/12343-2

##### Top View

Order Number LM4880M  
See NS Package  
Number M08A

TL/H/12343-1