

## LM2481 145V Triple Bias Clamp

Check for Samples: [LM2481](#)

### FEATURES

- Wide range integrated triple bias clamp
- High input impedance
- Matched to LM2421 HDTV Driver

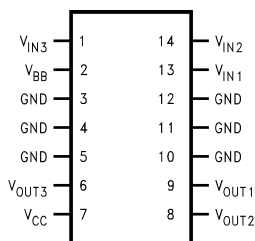
### APPLICATIONS

- AC coupled HDTV applications using the 1080i and 720p formats

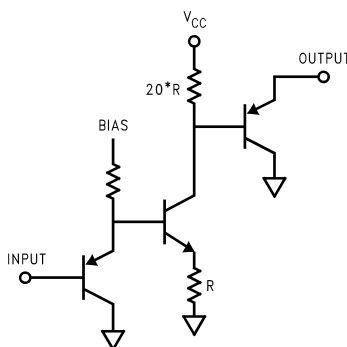
### DESCRIPTION

The LM2481 driver is an Integrated 145V triple bias clamp circuit for DC recovery of each of the AC coupled outputs of a HDTV CRT driver. It is well matched with the DAC outputs of the LM126X family of pre-amplifiers. Each amplifier has its gain internally set to -20. The LM2481 is packaged in an industry standard 14 lead molded plastic dual-in-line package.

### Schematic and Connection Diagrams



**Figure 1. Top View**  
**Order Number LM2481NA**



**Figure 2. Simplified Schematic Diagram (One Channel)**



These devices have limited built-in ESD protection. The leads should be shorted together or the device placed in conductive foam during storage or handling to prevent electrostatic damage to the MOS gates.



Please be aware that an important notice concerning availability, standard warranty, and use in critical applications of Texas Instruments semiconductor products and disclaimers thereto appears at the end of this data sheet.

All trademarks are the property of their respective owners.

PRODUCTION DATA information is current as of publication date. Products conform to specifications per the terms of the Texas Instruments standard warranty. Production processing does not necessarily include testing of all parameters.

Copyright © 2004–2011, Texas Instruments Incorporated

**Absolute Maximum Ratings** <sup>(1)</sup> <sup>(2)</sup>

Supply Voltage, $V_{CC}$	+155V
Bias Voltage, $V_{BB}$	+15V
Input Voltage, $V_{IN}$	-0.5V to $V_{BB} + 0.55V$
Storage Temperature Range, $T_{STG}$	-65°C to +150°C
Lead Temperature (Soldering, <10sec.)	300°C
ESD Tolerance	
Machine Model	200V
Human Body Model	2KV
Max Junction Temperature	150°C
$\theta_{JA}$ (Typ) <sup>(3)</sup>	70°C

(1) Absolute Maximum Ratings indicate beyond which damage to the device may occur.

(2) All voltages are measured with respect to GND, unless otherwise specified.

(3) Measured with 1in<sup>2</sup> copper on PCB connected to pins 3, 4, 5, 10, 11, 12. See Thermal Considerations Section.

**Limits of Operating Ranges** <sup>(1)</sup>

$V_{CC}$	130V to 150V
$V_{BB}$	7V to 13V
$V_{IN}$	1V to 5V
$V_{OUT}$	25V to 140V
Ambient Temperature Range, $T_A$	0°C to 70°C

(1) All voltages are measured with respect to GND, unless otherwise specified.

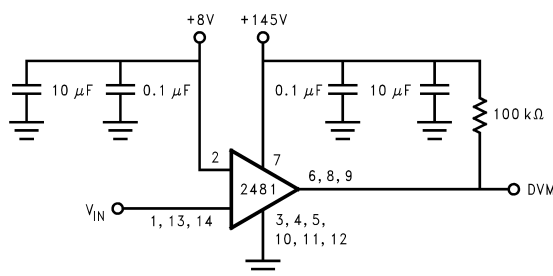
## DC Clamp Electrical Characteristics

(See Figure 2 for Test Circuit)

Unless otherwise noted:  $V_{CC} = +145V$ ,  $V_{BB} = 8V$ ,  $V_{IN} = +2.5V$ ,  $T_A = 30^\circ C$

Symbol	Parameter	Conditions	Min	Typ	Max	Units
$I_{CC}$	Supply Current	All three channels, includes 100K pull-up resistor current		4.5	7	mA
$I_{BB}$	Bias Supply Current	All channels		2		mA
$V_{OUT}$	DC Output Voltage		100	108	115	$V_{DC}$
$V_{OUT-Range}$	Output Voltage Range	$V_{IN}$ Range = +1.5V to 4.5V		60		V
$A_V$	DC Voltage Gain		-18	-20	-22	V/V
LE	Linearity Error	See Note 4		5		%

## Test Circuit

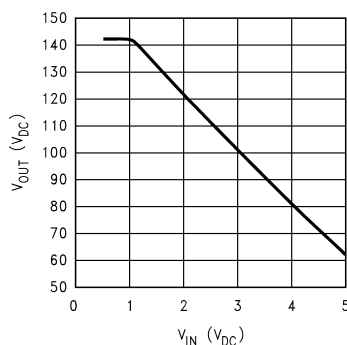


**Figure 3. Test Circuit**

Figure 3 shows the test circuit for evaluation of the LM2481 Clamp Amplifier. A high impedance Voltmeter ( $>100M\Omega$ ) is used for DC measurements at the output.

### Typical Performance Characteristics

( $V_{CC} = +145V$ ,  $V_{BB} = +8V$ ,  $V_{IN} = +2.5V$ , Test Circuit - Figure 2)



**Figure 4. V<sub>out</sub> vs V<sub>in</sub>**

### Theory of Operation

The simplified circuit diagram of the LM2481 is shown in Figure 1. The DC clamp circuit amplifies the input signal by -20 and the gain is set by the resistor ratio of 20R and R. The output will require a pull-up resistor to 145V.

Figure 2 shows the test circuit for evaluation of the LM2481 Clamp Amplifier. A high impedance voltmeter (>100MΩ) is used for DC measurements at the output.

### Application Hints

#### INTRODUCTION

National Semiconductor (NSC) is committed to provide application information that assists our customers in obtaining the best performance possible from our products. The following information is provided in order to support this commitment. The reader should be aware that the optimization of performance was done using a specific printed circuit board designed at NSC. Variations in performance can be realized due to physical changes in the printed circuit board and the application. Therefore, the designer should know that component value changes may be required in order to optimize performance in a given application. The values shown in this document can be used as a starting point for evaluation purposes.

#### POWER SUPPLY BYPASS

The LM2481 should have proper power supply bypassing for optimum performance. A 0.1 μF capacitor should be connected from the supply pins, VCC and VBB, to ground, as close to the supply and ground pins as is practical. Additionally, a 1 μF electrolytic capacitor should be connected from the supply pins to ground. The electrolytic capacitor should also be placed reasonably close to the LM2481's supply and ground pins.

#### ARC PROTECTION

During normal CRT operation, internal arcing may occasionally occur. To protect the LM2481 against arcing the following steps should be done (See Figure 7):

- The traces connecting the LM126X preamp DACs and the LM2481 input pins (pins 1, 13, and 14) should be run around the top of the LM2421. They should not go through the output circuit of the LM2421.
- C43, C44, and C45 should be located close to the LM126X preamp.
- R44, R45, and R46 should be located close to the LM2481.
- C21, C24, and C25 on the output pins of the LM2481 (pins 6, 8, and 9) should be located close to the LM2481. The grounds of these capacitors should have a short direct return to GND (pins 3, 4, 5, 10, 11, and 12) of the LM2481.
- C9 and C36 on the supply lines (pins 2 and 7) should be located close to the LM2481. The grounds of these capacitors should have a short direct return to GND (pins 3, 4, 5, 10, 11, and 12) of the LM2481.
- The ground of the LM2481 should have a short direct connection to the ground of the LM2421.

## Thermal Considerations

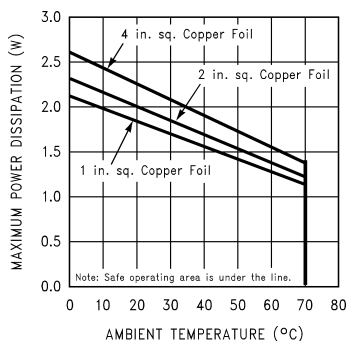
The package the LM2481 is in uses the ground pins (3, 4, 5, 10, 11, and 12) to conduct heat from the LM2481. These pins should be connected to a ground plane that acts as a heat sink. See the example ground plane connected to these pins in the National Semiconductor PCB shown in Figure 7.

Figure 4 is used to determine the size of ground plane heat sink. The lines in Figure 4 represent a junction temperature of 150°C when the size of heat sink noted by the line is used. The area under the line is the safe operating area. Using Figure 4, the following example shows how to determine the size of the ground plane.

The LM2481 uses about 0.4W of quiescent power. If  $V_{CC} = +145V$ , and each channel of the LM2481 needs to sink an average of 1mA, the LM2481 will use:

$$0.4W + 3 \times (145V \times 1mA) = 0.835W$$

Figure 4 shows that the LM2481 dissipating 0.835W with one sq. in. of copper ground plane heat sink is in the safe operating range for any ambient temperature up to 70°C.



**Figure 5. Maximum Power Dissipation vs. Ambient Temperature**

## Typical Application

A typical application of the LM2481 is shown in Figures 5 and Figure 6. Used in conjunction with an LM126X Preamp and an LM2421 CRT Driver, a complete video channel from input to CRT cathode can be achieved. Performance is ideal for HDTV applications. Figure 5 and Figure 6 are the schematic for the NSC demonstration board that can be used to evaluate the LM126X/LM2421/LM2481.

## NSC Demonstration Board

Figure 7 shows the routing and component placement on the NSC LM126X/LM2421/LM2481 demonstration board. The schematic of the board is shown in Figure 5 and Figure 6. This board provides a good example of a layout that can be used as a guide.

**Figure 6. LM126X/LM2421/LM2481 Demonstration Board Schematic**

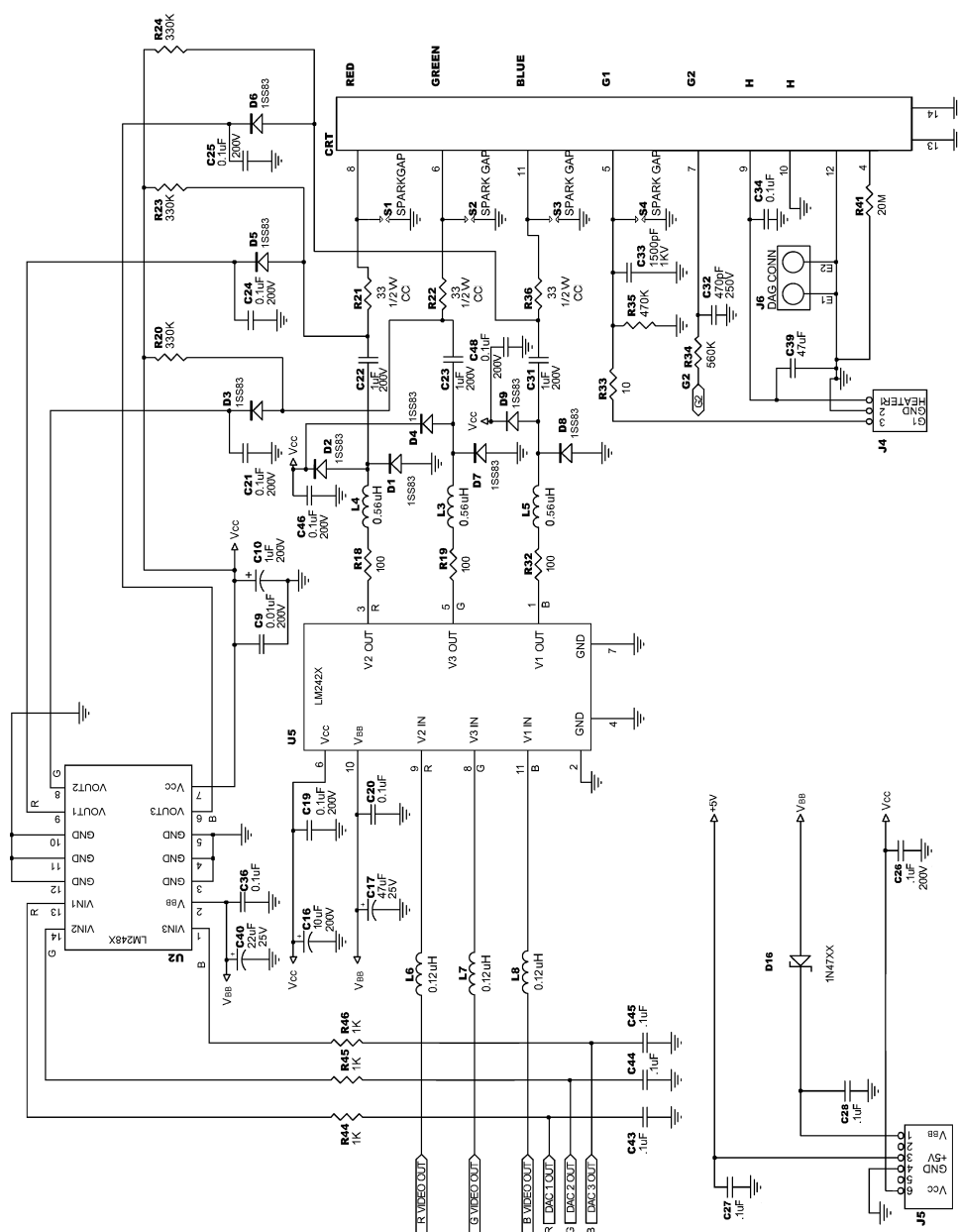
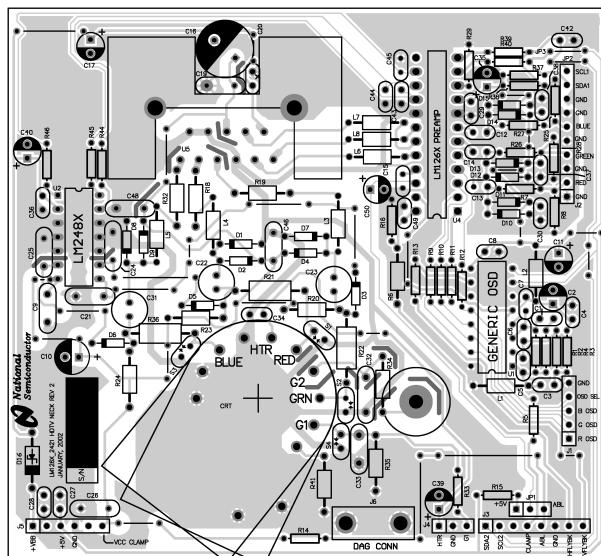


Figure 7. LM126X/LM2421/LM2481 Demonstration Board Schematic



**Figure 8. LM126X/LM2421/LM2481 Demonstration Board Layout**



## IMPORTANT NOTICE

Texas Instruments Incorporated and its subsidiaries (TI) reserve the right to make corrections, enhancements, improvements and other changes to its semiconductor products and services per JESD46, latest issue, and to discontinue any product or service per JESD48, latest issue. Buyers should obtain the latest relevant information before placing orders and should verify that such information is current and complete. All semiconductor products (also referred to herein as "components") are sold subject to TI's terms and conditions of sale supplied at the time of order acknowledgment.

TI warrants performance of its components to the specifications applicable at the time of sale, in accordance with the warranty in TI's terms and conditions of sale of semiconductor products. Testing and other quality control techniques are used to the extent TI deems necessary to support this warranty. Except where mandated by applicable law, testing of all parameters of each component is not necessarily performed.

TI assumes no liability for applications assistance or the design of Buyers' products. Buyers are responsible for their products and applications using TI components. To minimize the risks associated with Buyers' products and applications, Buyers should provide adequate design and operating safeguards.

TI does not warrant or represent that any license, either express or implied, is granted under any patent right, copyright, mask work right, or other intellectual property right relating to any combination, machine, or process in which TI components or services are used. Information published by TI regarding third-party products or services does not constitute a license to use such products or services or a warranty or endorsement thereof. Use of such information may require a license from a third party under the patents or other intellectual property of the third party, or a license from TI under the patents or other intellectual property of TI.

Reproduction of significant portions of TI information in TI data books or data sheets is permissible only if reproduction is without alteration and is accompanied by all associated warranties, conditions, limitations, and notices. TI is not responsible or liable for such altered documentation. Information of third parties may be subject to additional restrictions.

Resale of TI components or services with statements different from or beyond the parameters stated by TI for that component or service voids all express and any implied warranties for the associated TI component or service and is an unfair and deceptive business practice. TI is not responsible or liable for any such statements.

Buyer acknowledges and agrees that it is solely responsible for compliance with all legal, regulatory and safety-related requirements concerning its products, and any use of TI components in its applications, notwithstanding any applications-related information or support that may be provided by TI. Buyer represents and agrees that it has all the necessary expertise to create and implement safeguards which anticipate dangerous consequences of failures, monitor failures and their consequences, lessen the likelihood of failures that might cause harm and take appropriate remedial actions. Buyer will fully indemnify TI and its representatives against any damages arising out of the use of any TI components in safety-critical applications.

In some cases, TI components may be promoted specifically to facilitate safety-related applications. With such components, TI's goal is to help enable customers to design and create their own end-product solutions that meet applicable functional safety standards and requirements. Nonetheless, such components are subject to these terms.

No TI components are authorized for use in FDA Class III (or similar life-critical medical equipment) unless authorized officers of the parties have executed a special agreement specifically governing such use.

Only those TI components which TI has specifically designated as military grade or "enhanced plastic" are designed and intended for use in military/aerospace applications or environments. Buyer acknowledges and agrees that any military or aerospace use of TI components which have **not** been so designated is solely at the Buyer's risk, and that Buyer is solely responsible for compliance with all legal and regulatory requirements in connection with such use.

TI has specifically designated certain components as meeting ISO/TS16949 requirements, mainly for automotive use. In any case of use of non-designated products, TI will not be responsible for any failure to meet ISO/TS16949.

### Products

Audio	<a href="http://www.ti.com/audio">www.ti.com/audio</a>
Amplifiers	<a href="http://amplifier.ti.com">amplifier.ti.com</a>
Data Converters	<a href="http://dataconverter.ti.com">dataconverter.ti.com</a>
DLP® Products	<a href="http://www.dlp.com">www.dlp.com</a>
DSP	<a href="http://dsp.ti.com">dsp.ti.com</a>
Clocks and Timers	<a href="http://www.ti.com/clocks">www.ti.com/clocks</a>
Interface	<a href="http://interface.ti.com">interface.ti.com</a>
Logic	<a href="http://logic.ti.com">logic.ti.com</a>
Power Mgmt	<a href="http://power.ti.com">power.ti.com</a>
Microcontrollers	<a href="http://microcontroller.ti.com">microcontroller.ti.com</a>
RFID	<a href="http://www.ti-rfid.com">www.ti-rfid.com</a>
OMAP Applications Processors	<a href="http://www.ti.com/omap">www.ti.com/omap</a>
Wireless Connectivity	<a href="http://www.ti.com/wirelessconnectivity">www.ti.com/wirelessconnectivity</a>

### Applications

Automotive and Transportation	<a href="http://www.ti.com/automotive">www.ti.com/automotive</a>
Communications and Telecom	<a href="http://www.ti.com/communications">www.ti.com/communications</a>
Computers and Peripherals	<a href="http://www.ti.com/computers">www.ti.com/computers</a>
Consumer Electronics	<a href="http://www.ti.com/consumer-apps">www.ti.com/consumer-apps</a>
Energy and Lighting	<a href="http://www.ti.com/energy">www.ti.com/energy</a>
Industrial	<a href="http://www.ti.com/industrial">www.ti.com/industrial</a>
Medical	<a href="http://www.ti.com/medical">www.ti.com/medical</a>
Security	<a href="http://www.ti.com/security">www.ti.com/security</a>
Space, Avionics and Defense	<a href="http://www.ti.com/space-avionics-defense">www.ti.com/space-avionics-defense</a>
Video and Imaging	<a href="http://www.ti.com/video">www.ti.com/video</a>

### TI E2E Community

[e2e.ti.com](http://e2e.ti.com)