



LM120/LM320 Series 3-Terminal Negative Regulators

General Description

The LM120 series are three-terminal negative regulators with a fixed output voltage of $-5V$, $-12V$, and $-15V$, and up to 1.5A load current capability. Where other voltages are required, the LM137 and LM137HV series provide an output voltage range of $-1.2V$ to $-47V$.

The LM120 need only one external component—a compensation capacitor at the output, making them easy to apply. Worst case guarantees on output voltage deviation due to any combination of line, load or temperature variation assure satisfactory system operation.

Exceptional effort has been made to make the LM120 Series immune to overload conditions. The regulators have current limiting which is independent of temperature, combined with thermal overload protection. Internal current limiting protects against momentary faults while thermal shutdown prevents junction temperatures from exceeding safe limits during prolonged overloads.

Although primarily intended for fixed output voltage applications, the LM120 Series may be programmed for higher output voltages with a simple resistive divider. The low quiescent drain current of the devices allows this technique to be used with good regulation.

Features

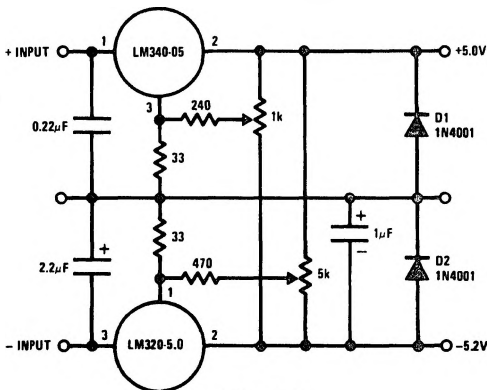
- Preset output voltage error less than $\pm 3\%$
- Preset current limit
- Internal thermal shutdown
- Operates with input-output voltage differential down to 1V
- Excellent ripple rejection
- Low temperature drift
- Easily adjustable to higher output voltage

LM120 Series Packages and Power Capability

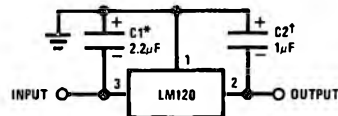
Device	Package	Rated Power Dissipation	Design Load Current
LM120/LM320	TO-3 (K)	20W	1.5A
	TO-39 (H)	2W	0.5A
LM320	TO-220 (T)	15W	1.5A
LM320M	TO-202 (P)	7.5W	0.5A

Typical Applications

Dual Trimmed Supply



Fixed Regulator



*Required if regulator is separated from filter capacitor by more than 3". For value given, capacitor must be solid tantalum. 25 μF aluminum electrolytic may be substituted.

†Required for stability. For value given, capacitor must be solid tantalum. 25 μF aluminum electrolytic may substituted. Values given may be increased without limit.

For output capacitance in excess of 100 μF , a high current diode from input to output (1N4001, etc.) will protect the regulator from momentary input shorts.

-5 Volt Regulators (Note 3)

Absolute Maximum Ratings

If Military/Aerospace specified devices are required, please contact the National Semiconductor Sales Office/Distributors for availability and specifications. (Note 5)

Power Dissipation Internally Limited
Input Voltage -25V

Input-Output Voltage Differential 25V
Junction Temperatures See Note 1
Storage Temperature Range -65°C to +150°C
Lead Temperature (Soldering, 10 sec.) 300°C
Plastic 260°C

Electrical Characteristics

Parameter	Order Numbers	Metal Can Package												Power Plastic Package			
		LM120K-5.0 (TO-3)			LM320K-5.0 (TO-3)			LM120H-5.0 (TO-39)			LM320H-5.0 (TO-39)			LM320T-5.0 (TO-220)			
		Min	Typ	Max	Min	Typ	Max	Min	Typ	Max	Min	Typ	Max	Min	Typ	Max	Units
Design Output Current (I _p) Device Dissipation (P _D)	Conditions (Note 1)																
		T _J = 25°C, V _{IN} = 10V, I _{LOAD} = 5 mA															
Output Voltage		-5.1	-5	-4.9	-5.2	-5	-4.8	-5.1	-5	-4.9	-5.2	-5	-4.8	-5.2	-5	-4.8	V
Line Regulation			10	25		10	40		10	25		10	40		10	40	mV
Input Voltage		-25		-7	-25		-7	-25		-7	-25		-7	-25		-7.5	V
Ripple Rejection	f = 120 Hz	54	64		54	64		54	64		54	64		54	64		dB
Load Regulation, (Note 2)	T _J = 25°C, V _{IN} = 10V, 5 mA ≤ I _{LOAD} ≤ I _D		50	75		60	100		30	50		30	50		50	100	mV
Output Voltage, (Note 1)	-7.5V ≤ V _{IN} ≤ V _{MAX} , 5 mA ≤ I _{LOAD} ≤ I _D , P ≤ P _D	-5.20		-4.80	-5.25		-4.75	-5.20		-4.80	-5.25		-4.75	-5.25		-4.75	V
Quiescent Current	V _{MIN} ≤ V _{IN} ≤ V _{MAX}		1	2		1	2		1	2		1	2		1		mA
Quiescent Current Change	T _J = 25°C V _{MIN} ≤ V _{IN} ≤ V _{MAX} 5 mA ≤ I _{LOAD} ≤ I _D		0.1	0.4		0.1	0.4		0.05	0.4		0.05	0.4		0.1	0.4	mA
Output Noise Voltage	T _A = 25°C, C ₁ = 1 μF, I _L = 5 mA, V _{IN} = 10V, 10 Hz ≤ f ≤ 100 kHz		150		150		150		150		150		150		150		μV
Long Term Stability			5	50		5	50		5	50		5	50		10		mV
Thermal Resistance Junction to Case			3			3											°C/W
Junction to Ambient			35			35											°C/W

Note 1: This specification applies over -55°C ≤ T_J ≤ +150°C for the LM120 and 0°C ≤ T_J ≤ +125°C for the LM320.

Note 2: Regulation is measured at constant junction temperature. Changes in output voltage due to heating effects must be taken into account separately. To ensure constant junction temperature, low duty cycle, pulse testing is used. The LM120/LM320 series does have low thermal feedback, improving line and load regulation. On all other tests, even though power dissipation is internally limited, electrical specifications apply only up to P_D.

Note 3: For -5V 3 amp regulators, see LM145 data sheet.

Note 4: Thermal resistance of typically 85°C/W (in 400 linear feet air flow), 224°C/W (in static air) junction to ambient, of typically 21°C/W junction to case.

Note 5: Refer to RETS120-SH drawing for LM120H-5.0 or RETS120-SK drawing for LM120-5K military specifications.

— 12 Volt Regulators

Absolute Maximum Ratings

If Military/Aerospace specified devices are required, please contact the National Semiconductor Sales Office/Distributors for availability and specifications. (Note 4)

Power Dissipation Internally Limited
Input Voltage -35V

Input-Output Voltage Differential 30V

Junction Temperatures See Note 1

Storage Temperature Range -65°C to +150°C

Lead Temperature (Soldering, 10 sec.) 300°C

Electrical Characteristics

Parameter	Order Numbers	Metal Can Package						Power Plastic Package										
		LM120K-12 (TO-3)		LM320K-12 (TO-3)		LM120H-12 (TO-39)		LM320H-12 (TO-39)		LM320T-12 (TO-220)		Units						
		1A 20W	1A 20W	1A 20W	1A 20W	0.2A 2W	0.2A 2W	0.2A 2W	0.2A 2W	1A 15W	1A 15W	Min	Typ	Max				
Design Output Current (I_D) Device Dissipation (P_D)		Conditions (Note 1)																
Output Voltage	$T_J = 25^\circ\text{C}, V_{IN} = 17\text{V}, I_{LOAD} = 5\text{ mA}$	-12.3	Min	Typ	Max	-11.7	Min	Typ	Max	-12.4	Min	Typ	Max	-11.6	Min	Typ	Max	V
Line Regulation	$T_J = 25^\circ\text{C}, I_{LOAD} = 5\text{ mA}, V_{MIN} \leq V_{IN} \leq V_{MAX}$	4	Min	Typ	Max	4	Min	Typ	Max	4	Min	Typ	Max	4	Min	Typ	Max	mV
Input Voltage		-32	Min	Typ	Max	-14	Min	Typ	Max	-32	Min	Typ	Max	-14	Min	Typ	Max	V
Ripple Rejection	$f = 120\text{ Hz}$	56	Min	Typ	Max	56	Min	Typ	Max	56	Min	Typ	Max	56	Min	Typ	Max	dB
Load Regulation, (Note 2)	$T_J = 25^\circ\text{C}, V_{IN} = 17\text{V}, 5\text{ mA} \leq I_{LOAD} \leq I_D$	30	Min	Typ	Max	30	Min	Typ	Max	30	Min	Typ	Max	30	Min	Typ	Max	mV
Output Voltage, (Note 1)	$14.5\text{V} \leq V_{IN} \leq V_{MAX}, 5\text{ mA} \leq I_{LOAD} \leq I_D, P \leq P_D$	-12.5	Min	Typ	Max	-11.5	Min	Typ	Max	-12.6	Min	Typ	Max	-11.4	Min	Typ	Max	V
Quiescent Current	$V_{MIN} \leq V_{IN} \leq V_{MAX}$	2	Min	Typ	Max	2	Min	Typ	Max	2	Min	Typ	Max	2	Min	Typ	Max	mA
Quiescent Current Change	$T_J = 25^\circ\text{C}, V_{MIN} \leq V_{IN} \leq V_{MAX}, 5\text{ mA} \leq I_{LOAD} \leq I_D$	0.1	Min	Typ	Max	0.1	Min	Typ	Max	0.1	Min	Typ	Max	0.1	Min	Typ	Max	mA
Output Noise Voltage	$T_A = 25^\circ\text{C}, C_L = 1\text{ }\mu\text{F}, I_L = 5\text{ mA}, V_{IN} = 17\text{V}, 10\text{ Hz} \leq f \leq 100\text{ kHz}$	400	Min	Typ	Max	400	Min	Typ	Max	400	Min	Typ	Max	400	Min	Typ	Max	μV
Long Term Stability		12	Min	Typ	Max	12	Min	Typ	Max	12	Min	Typ	Max	12	Min	Typ	Max	mV
Thermal Resistance Junction to Case		3	Min	Typ	Max	3	Min	Typ	Max	3	Min	Typ	Max	3	Min	Typ	Max	$^\circ\text{C}/\text{W}$
Junction to Ambient		35	Min	Typ	Max	35	Min	Typ	Max	35	Min	Typ	Max	35	Min	Typ	Max	$^\circ\text{C}/\text{W}$

Note 1: This specification applies over -55°C ≤ T_J ≤ +150°C for the LM120 and 0°C ≤ T_J ≤ +125°C for the LM320.

Note 2: Regulation is measured at constant junction temperature. Changes in output voltage due to heating effects must be taken into account separately. To ensure constant junction temperature, low duty cycle, pulse testing is used. The LM120/LM320 series does have low thermal feedback, improving line and load regulation. On all other tests, even though power dissipation is internally limited, electrical specifications apply only up to P_D.

Note 3: Thermal resistance of typically 85°C/W (in 400 linear feet/min air flow), 22°C/W (in static air) junction to ambient, of typically 21°C/W junction to case.

Note 4: Refer to RETS120H-12 drawing for LM120H-12 or RETS120-12K drawing for LM120K-12 military specifications.

- 15 Volt Regulators

Absolute Maximum Ratings

If Military/Aerospace specified devices are required, please contact the National Semiconductor Sales Office/Distributors for availability and specifications. (Note 4)

Input-Output Voltage Differential
Junction Temperatures
Storage Temperature Range
Lead Temperature (Soldering, 10 sec.)

30V
See Note 1
-65°C to +150°C
300°C

Power Dissipation

Internally Limited

Input Voltage

-40V
-35V

LM120/LM320

LM320T

Electrical Characteristics

Parameter	Design Output Current (I _D) Device Dissipation (P _D)	Metal Can Package												Power Plastic Package							
		LM120K-15 (TO-3)				LM320K-15 (TO-3)				LM120H-15 (TO-39)				LM320H-15 (TO-39)				LM320T-15 (TO-220)			
		Min	Typ	Max	Units	Min	Typ	Max	Units	Min	Typ	Max	Units	Min	Typ	Max	Units	Min	Typ	Max	Units
Output Voltage	T _J = 25°C, V _{IN} = 20V, I _{LOAD} = 5 mA	-15.3	-15	-14.7	-15.4	-15	-14.6	-15.3	-15	-14.7	-15.4	-15	-14.6	-15.5	-15	-14.5	V				
Line Regulation	T _J = 25°C, I _{LOAD} = 5 mA, V _{MIN} ≤ V _{IN} ≤ V _{MAX}	5	10	10	5	10	10	5	10	10	5	10	20	5	20	20	mV				
Input Voltage		-35		-17	-35		-17	-35		-17	-35		-17	-35		-17.5	V				
Ripple Rejection	f = 120 Hz	56	80		56	80		56	80		56	80		56	80		dB				
Load Regulation, (Note 2)	T _J = 25°C, V _{IN} = 20V, 5 mA ≤ I _{LOAD} ≤ I _D	30	30	80	30	30	80	30	30	25	30	30	40	30	30	80	mV				
Output Voltage, (Note 1)	17.5V ≤ V _{IN} ≤ V _{MAX} , 5 mA ≤ I _{LOAD} ≤ I _D , P ≤ P _D	-15.5		-14.5	-15.6		-14.4	-15.5		-14.5	-15.6		-14.4	-15.7		-14.3	V				
Quiescent Current	V _{MIN} ≤ V _{IN} ≤ V _{MAX}	2	4	4	2	4	4	2	4	4	2	4	4	2	4	4	mA				
Change	T _J = 25°C V _{MIN} ≤ V _{IN} ≤ V _{MAX} 5 mA ≤ I _{LOAD} ≤ I _D	0.1	0.4	0.4	0.1	0.4	0.4	0.1	0.4	0.4	0.1	0.4	0.4	0.05	0.4	0.4	mA				
Output Noise Voltage	T _A = 25°C, C _L = 1 μF, I _L = 5 mA, V _{IN} = 20V, 10 Hz ≤ f ≤ 100 kHz	400	400	400	400	400	400	400	400	400	400	400	400	400	400	400	μV				
Long Term Stability		15	150	150	15	150	150	15	150	150	15	150	150	15	150	30	mV				
Thermal Resistance Junction to Case		3	3	3	3	3	3	3	3	3	3	3	3	3	3	4	°C/W				
Junction to Ambient		35	35	35	35	35	35	35	35	35	35	35	35	35	35	50	°C/W				

Note 1: This specification applies over -55°C ≤ T_J ≤ +150°C for the LM120 and 0°C ≤ T_J ≤ +125°C for the LM320.

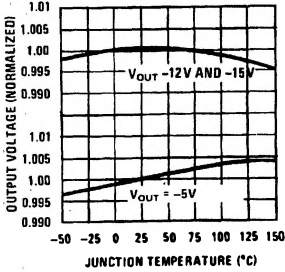
Note 2: Regulation is measured at constant junction temperature. Changes in output voltage due to heating effects must be taken into account separately. To ensure constant junction temperature, low duty cycle, pulse testing is used. The LM120/LM320 series does have low thermal feedback, improving line and load regulation. On all other tests, even though power dissipation is internally limited, electrical specifications apply only up to P_D.

Note 3: Thermal resistance of typically 85°C/W (in 400 linear feet/min air flow), 224°C/W (in static air) junction to ambient, of typically 21°C/W junction to case.

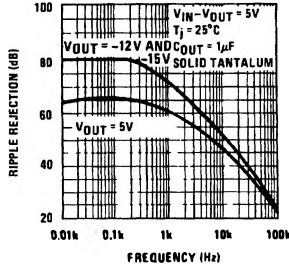
Note 4: Refer to RETS120-15H drawing for LM120H-15 or RETS120-15K drawing for LM120K-15 military specifications.

Typical Performance Characteristics

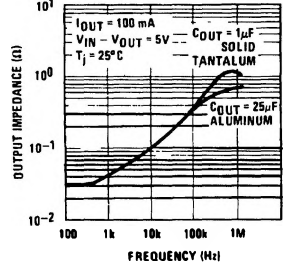
Output Voltage vs Temperature



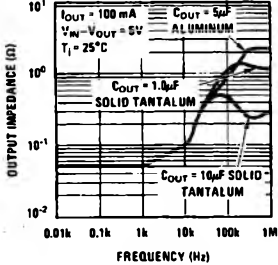
Ripple Rejection (All Types)



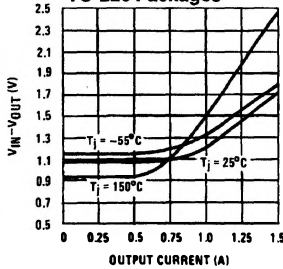
Output Impedance TO-3 and TO-220 Packages



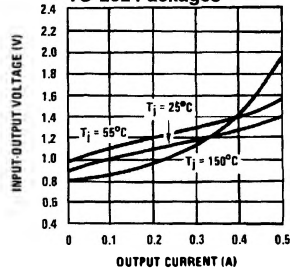
Output Impedance TO-5 and TO-202 Packages



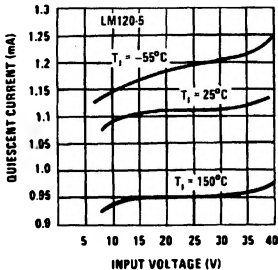
Minimum Input-Output Differential TO-3 and TO-220 Packages



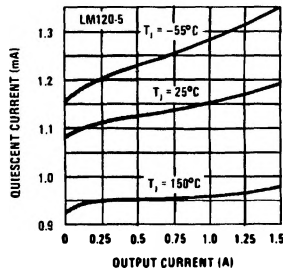
Minimum Input-Output Differential TO-5 and TO-202 Packages



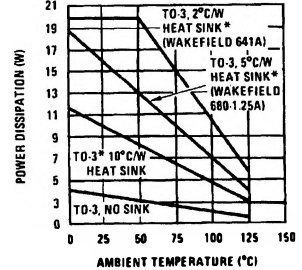
Quiescent Current vs Input Voltage



Quiescent Current vs Load Current



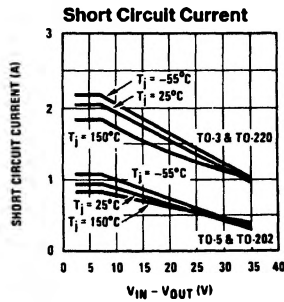
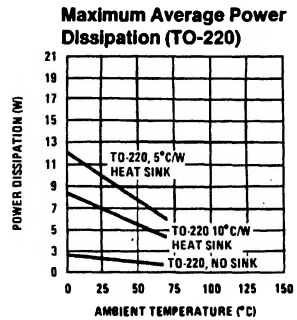
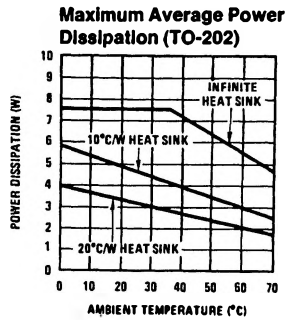
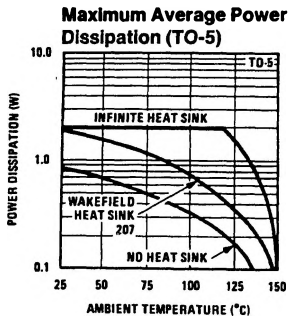
Maximum Average Power Dissipation (TO-3)



*These curves for LM120. Derate 25°C further for LM320.

TL/H/7767-4

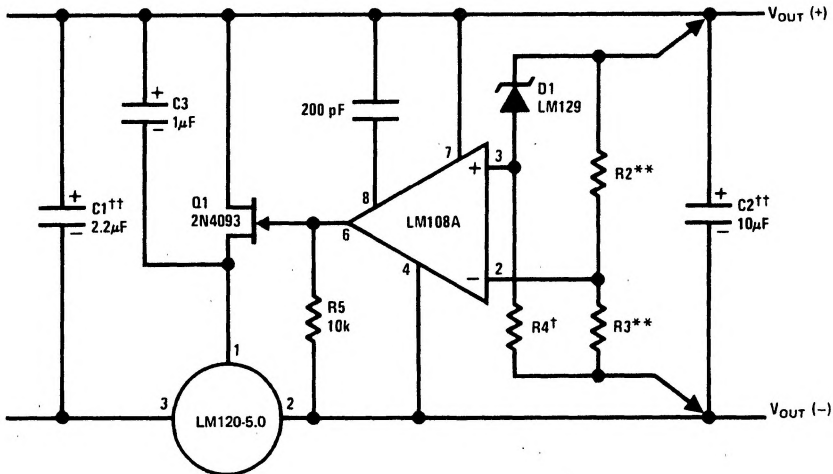
Typical Performance Characteristics (Continued)



TL/H/7767-5

Typical Applications (Continued)

High Stability 1 Amp Regulator



TL/H/7767-6

Load and line regulation — 0.01% temperature stability — 0.2%

†Determines Zener current.

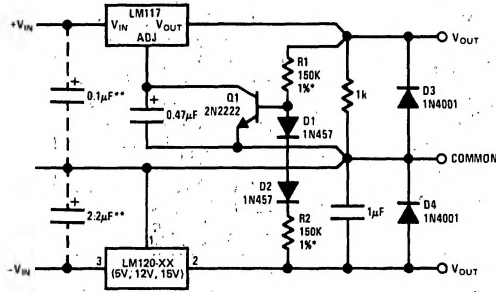
††Solid tantalum.

An LM120-12 or LM120-15 may be used to permit higher input voltages, but the regulated output voltage must be at least -15V when using the LM120-12 and -18V for the LM120-15.

**Select resistors to set output voltage. 2 ppm/°C tracking suggested.

Typical Applications (Continued)

Wide Range Tracking Regulator

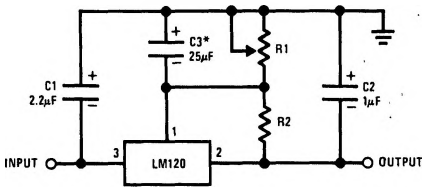


TL/H/7767-7

*Resistor tolerance of R1 and R2 determine matching of (+) and (-) inputs.

**Necessary only if raw supply capacitors are more than 3" from regulators. An LM3086N array may substitute for Q1, D1 and D2 for better stability and tracking. In the array diode transistors Q5 and Q4 (in parallel) make up D2; similarly, Q1 and Q2 become D1 and Q3 replaces the 2N2222.

Variable Output



TL/H/7767-9

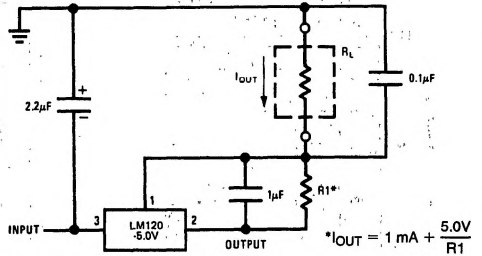
*Optional. Improves transient response and ripple rejection.

$$V_{OUT} = V_{SET} \frac{R1 + R2}{R2}$$

SELECT R2 AS FOLLOWS:

LM120-5	- 300Ω
LM120-12	- 750Ω
LM120-15	- 1k

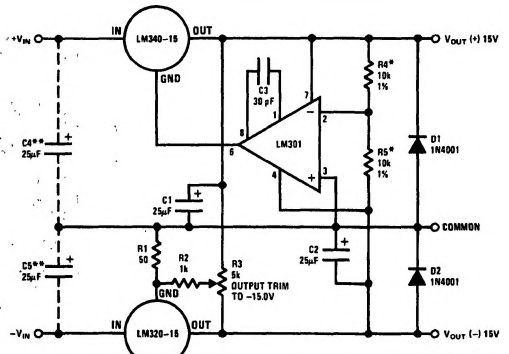
Current Source



$$I_{OUT} = 1 \text{ mA} + \frac{5.0V}{R1}$$

TL/H/7767-8

± 15V, 1 Amp Tracking Regulators



TL/H/7767-12

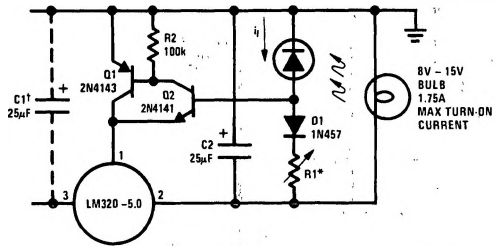
Performance (Typical)

Load Regulation at $\Delta I_L = 1A$	10 mV	1 mV
Output Ripple, $C_{IN} = 3000 \mu F, I_L = 1A$	100 μV rms	100 μV rms
Temperature Stability	+ 50 mV	+ 50 mV
Output Noise 10 Hz $\leq f \leq 10$ kHz	150 μV rms	150 μV rms

*Resistor tolerance of R4 and R5 determine matching of (+) and (-) outputs.

**Necessary only if raw supply filter capacitors are more than 2" from regulators.

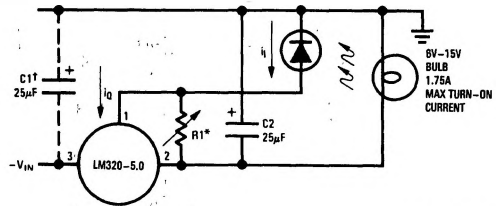
Light Controllers Using Silicon Photo Cells



TL/H/7767-10

*Lamp brightness increases until $i_l = 5V/R1$ (i_l can be set as low as 1 μA).

†Necessary only of raw supply filter capacitor is more than 2" from LM320MP.

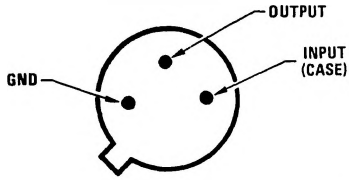


TL/H/7767-11

*Lamp brightness increases until $i_l = i_Q$ (1 mA) + 5V/R1.

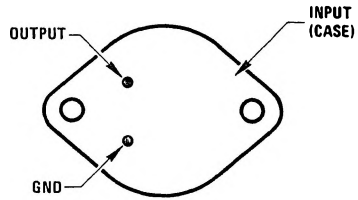
†Necessary only if raw supply filter capacitor is more than 2" from LM320.

Connection Diagrams



Bottom View

TL/H/7767-13

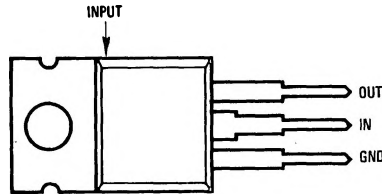


Bottom View

TL/H/7767-14

Metal Can Package TO-39 (H)
 Order Number LM120H-5.0, LM120H-12, LM120H-15,
 LM120H-5.0/883, LM120H-12/883, LM120H-15/883,
 LM320H-5.0, LM320H-12 or LM320H-15
 See NS Package Number H03A

Steel Metal Can Package TO-3 (K)
 Order Number LM120K-5.0/883, LM120K-12/883,
 LM120K-15/883, LM320K-5.0, LM320K-12 or LM320K-15
 See NS Package Number K02A



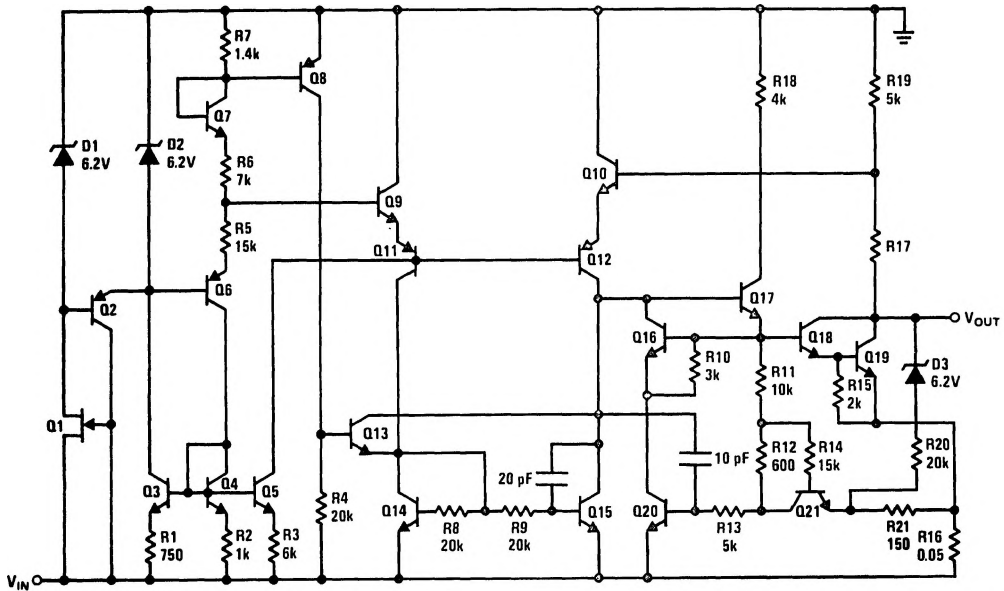
Front View

TL/H/7767-17

Power Package TO-220 (T)
 Order Number LM320T-5.0, LM320T-12 or LM320T-15
 See NS Package Number T03B

Schematic Diagrams

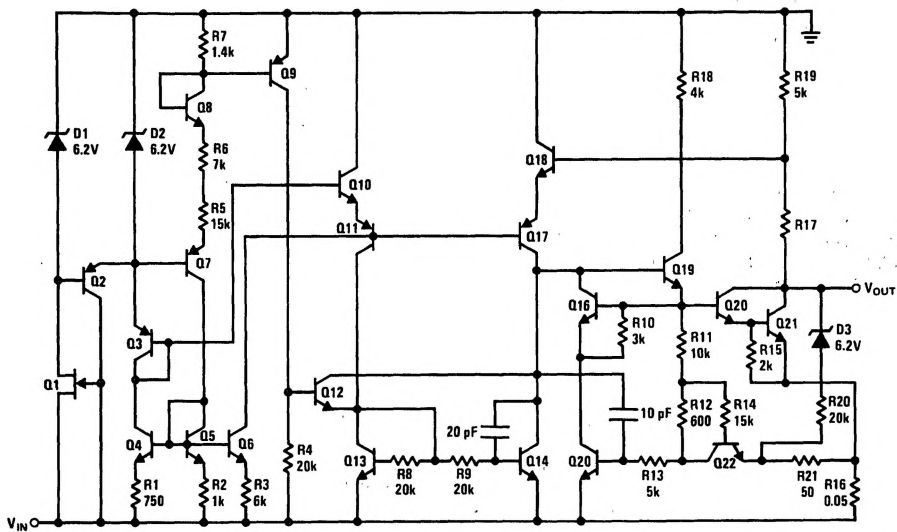
- 5V



TL/H/7767-18

Schematic Diagrams (Continued)

- 12V and - 15V



TL/H/7767-19