



LC4103TAB-01, ~~4103TAB-02~~, 4103C

STN LCD Dot Matrix Common Driver

Preliminary

Overview

The LC4103 is a common driver IC for large-scale dot matrix LCD displays. It includes a 160-bit bidirectional shift register and 4-level LCD drivers. The number of bits can be increased by using the I/O pins provided for cascade connection. In conjunction with the LC4104 segment driver, the LC4103 forms a chip set that can drive large-screen LCD panels.

Features

- High-voltage CMOS (P-sub) process.
- LCD drive voltage : 42V
- Logic system power-supply voltage : 2.7 to 5.5V
- Maximum fcp : 2.5MHz ($V_{DD}=5V\pm 10\%$),
200kHz ($V_{DD}=2.7$ to 4.5V)
- Bidirectional shift register.
- The shift register can be divided into two 80-bit registers (thus allowing two-screen drive).
- DISPOFF function (Holds the LCD drive voltage at a fixed level).
- Slim TAB (160 outputs).
- Display duty ratios : 1/160 to 1/480.
- Package lineup.

Type No.	Package
LC4103TAB-01	TAB : 250 μ m outer lead pitch
LC4103TAB-02	TAB : 180 μ m outer lead pitch
LC4103C	Chip product

■ Any and all SANYO products described or contained herein do not have specifications that can handle applications that require extremely high levels of reliability, such as life-support systems, aircraft's control systems, or other applications whose failure can be reasonably expected to result in serious physical and/or material damage. Consult with your SANYO representative nearest you before using any SANYO products described or contained herein in such applications.

■ SANYO assumes no responsibility for equipment failures that result from using products at values that exceed, even momentarily, rated values (such as maximum ratings, operating condition ranges, or other parameters) listed in products specifications of any and all SANYO products described or contained herein.

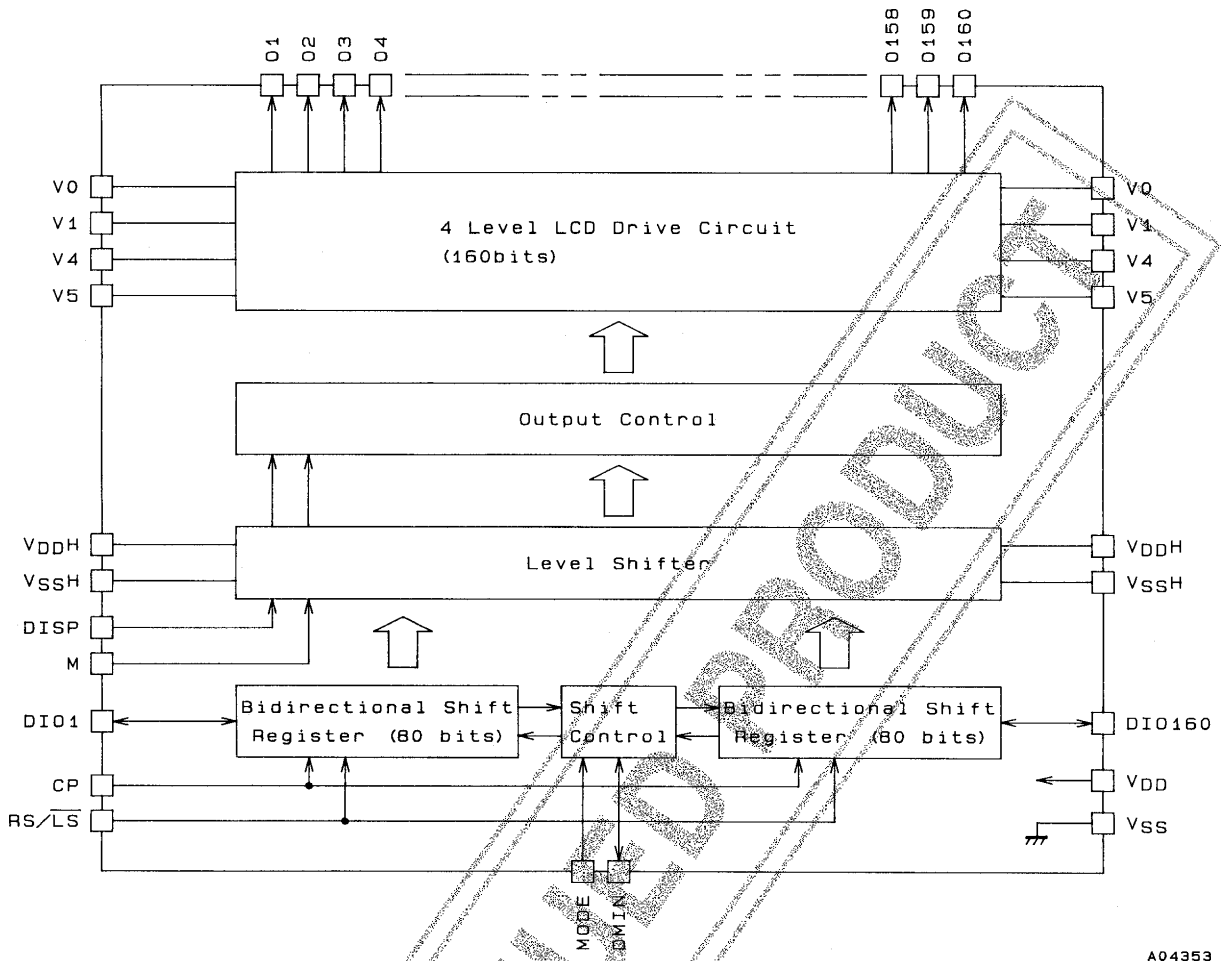
SANYO Electric Co.,Ltd. Semiconductor Company

TOKYO OFFICE Tokyo Bldg., 1-10, 1 Chome, Ueno, Taito-ku, TOKYO, 110-8534 JAPAN

62001TN (KT)/D3095HA (OT) No.5193-1/11

LC4103TAB-01, 4103TAB-02, 4103C

Block Diagram



A04353

Specifications

The following electrical characteristics apply when sealed in a SANYO standard PGA-208 package.

Absolute Maximum Ratings at $V_{SS}=0V$

Parameter	Symbol	Conditions	Ratings			Unit
			min	typ	max	
Maximum supply voltage	$V_{DD} \text{ max}$	V_{DD}	-0.3		+7	V
	$V_{DDH} \text{ max}$	V_{DDH}	-0.3		+45	V
	$V_{SSH} \text{ max}$	V_{SSH}	-0.3		+0.3	V
Input voltage	V_{IN}	CP, RS/LS, DISP, M, DIO0, DIO160, DMIN	-0.3		$V_{DD}+0.3$	V
	V_0, V_1	*, V_0, V_1			$V_{DDH}-7$	V
	V_4	*, V_4	-0.3		$V_{SS}+7$	V
	V_5	*, V_5	-0.3		+0.3	V
Operating temperature	T_{opr}		-20		+75	°C
Storage temperature	T_{stg}		-55		+125	°C

Note : * $V_0, V_1, V_4,$ and V_5 must obey the following inequalities : $V_{DDH} \geq V_0 \geq V_1 \geq V_{DDH}-7V$, and $7V \geq V_4 \geq V_5 \geq V_{SSH}$.

LC4103TAB-01, 4103TAB-02, 4103C

Allowable Operating Ranges at Ta = -20 to +75°C, VSS=0V

Parameter	Symbol	Conditions	Ratings			Unit
			min	typ	max	
Supply voltage	V _{DD}	V _{DD}	2.7		5.5	V
	V _{DDH}	V _{DDH}	20		42	V
	V _{SSH}	V _{SSH}		0		V
Input high-level voltage	V _{IH}	RS/L _S , DISP, M, DIO1, DIO160, CP, DMIN, MODE	0.8V _{DD}		V _{DD}	V
Input low-level voltage	V _{IL}	RS/L _S , DISP, M, DIO1, DIO160, CP, DMIN, MODE	0		0.2V _{DD}	V
Input voltage	V0, V1	*, V0, V1	V _{DDH} -7		V _{DDH}	V
	V4	*, V4	0		V _{SSH} +7	V
	V5	*, V5		0		V

Note : V0, V1, V4, and V5 must obey the following inequalities : V_{DDH} ≥ V0 ≥ V1 ≥ V_{DDH}-7V, and 7V ≥ V4 ≥ V5 ≥ V_{SSH}.
 At power on : First turn on the logic system power supply and then turn on the high-voltage system power supply.
 At power off : First turn off the high-voltage system power supply and then turn off the logic system power supply.

Allowable Operating Ranges at V_{DD}=5V±10%

Parameter	Symbol	Conditions	Ratings			Unit
			min	typ	max	
Clock frequency	fcp	CP			2.5	MHz
High-level clock pulse width	twc	CP	30			ns
Input setup time	tsu	CP, DIO0, DIO160, DMIN	100			ns
Input hold line	th	CP, DIO0, DIO160, DMIN	30			ns
CP rise time	tr	CP			30	ns
CP fall time	tf	CP			30	ns

Allowable Operating Ranges at V_{DD}=2.7 to 4.5V

Parameter	Symbol	Conditions	Ratings			Unit
			min	typ	max	
Clock frequency	fcp	CP			200	kHz
High-level clock pulse width	twc	CP	100			ns
Input setup time	tsu	CP, DIO0, DIO160, DMIN	100			ns
Input hold time	th	CP, DIO0, DIO160, DMIN	30			ns
CP rise time	tr	CP			30	ns
CP fall time	tf	CP			30	ns

Electrical Characteristics at Ta = -20 to +75°C, V_{DD}=2.7 to 5.5V, VSS=0V

Parameter	Symbol	Conditions	Ratings			Unit
			min	typ	max	
Input high-level current	I _{IH}	V _{IN} =V _{DD} : CP, RS/L _S , DISP, M, DIO0, DIO160, DMIN, MODE			1	μA
Input low-level current	I _{IL}	V _{IN} =V _{SS} : CP, RS/L _S , DISP, M, DIO0, DIO160, DMIN, MODE	-1			μA
Output high-level voltage	V _{OH}	I _O =-0.4mA : DIO1, DIO160	0.8V _{DD}		V _{DD}	V
Output low-level voltage	V _{OL}	I _O =0.4mA : DIO1, DIO160	V _{SS}		0.2V _{DD}	V
Output on resistance	R _{OUT}	V _{DDH} =40V, *, V0-V _O =0.5V, V1-V _O =0.5V, V _O -V4=0.5V, V _O -V5=0.5V, V _{DD} =2.7V : O1 to O160			1.0	kΩ
Current drain 1	I _{DD}	V _{DD} =2.7 to 5.5V, fcp=50kHz			200	μA
Current drain 2	I _{DDH}	fM=100Hz, no output load, V _{DDH} =42V, 1 data shift			500	μA

Note : * V_O is the voltage applied for an on output, V0=V_{DDH}, V1=19/20 (V_{DDH}-V_{SSH}), V4=1/20 (V_{DDH}-V_{SSH}), V5=V_{SSH}, V_{SSH}=V_{SS}.

LC4103TAB-01, 4103TAB-02, 4103C

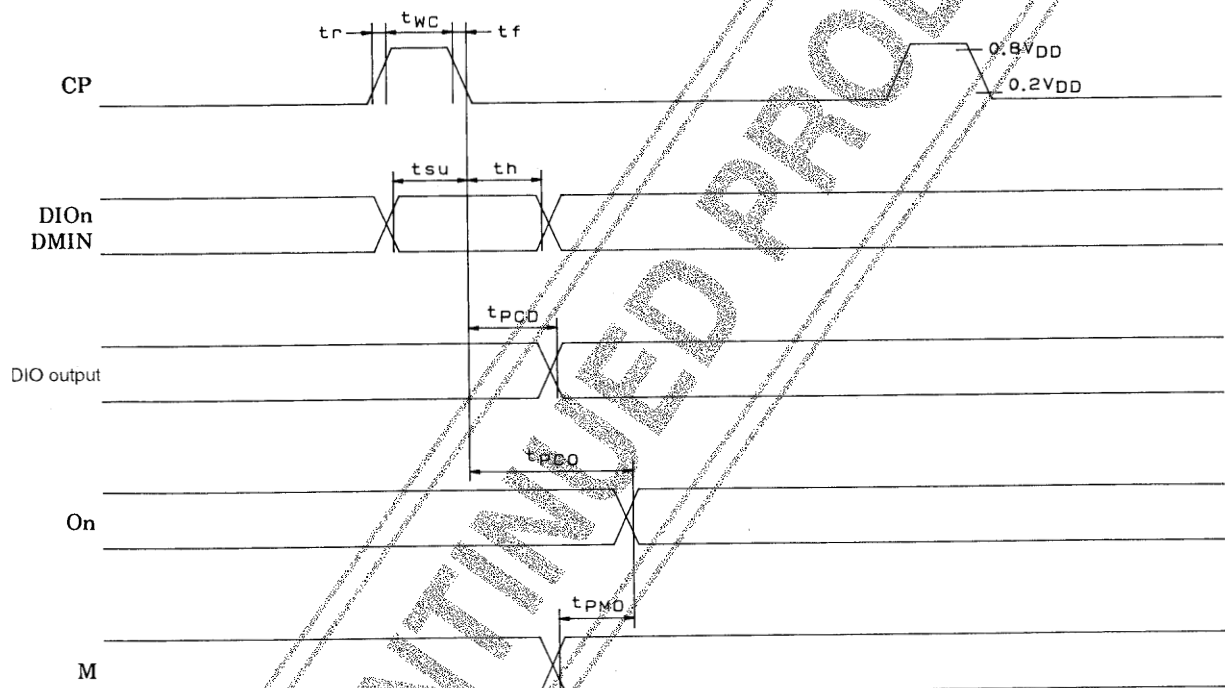
Switching Characteristics at $T_a = -20$ to $+75^\circ\text{C}$, $V_{SS}=0\text{V}$, $V_{DD}=5\text{V}\pm 10\%$

Parameter	Symbol	Conditions	Ratings			Unit
			min	typ	max	
DIO output delay time	tPCD	30pF capacitive load			90	ns
CP/On delay time	tPCO	100pF capacitive load			700	ns
M/On delay time	tPMO	100pF capacitive load			700	ns

Switching Characteristics at $T_a = -20$ to $+75^\circ\text{C}$, $V_{SS}=0\text{V}$, $V_{DD}=2.7$ to 4.5V

Parameter	Symbol	Conditions	Ratings			Unit
			min	typ	max	
DIO output delay time	tPCD	30pF capacitive load			350	ns
CP/On delay time	tPCO	100pF capacitive load			3	μs
M/On delay time	tPMO	100pF capacitive load			3	μs

Timing Chart



A04354

DISCONTINUED PRODUCT

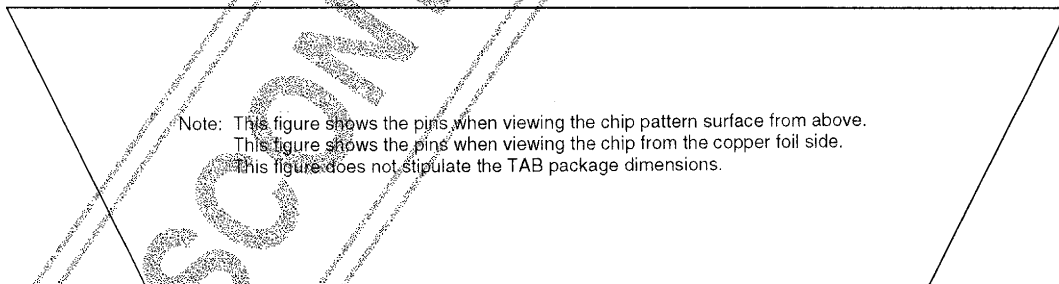
LC4103TAB-01, 4103TAB-02, 4103C

Pin Functions

Symbol	I/O	Function																												
O1 to O160	O	LCD drive outputs																												
		<table border="1" style="margin-left: 20px;"> <tr> <th>M</th> <th>Data</th> <th>DISP</th> <th>On</th> </tr> <tr> <td>L</td> <td>H</td> <td>H</td> <td>V0</td> </tr> <tr> <td>H</td> <td>L</td> <td>H</td> <td>V1</td> </tr> <tr> <td>L</td> <td>L</td> <td>H</td> <td>V4</td> </tr> <tr> <td>H</td> <td>H</td> <td>H</td> <td>V5</td> </tr> <tr> <td>*</td> <td>*</td> <td>L</td> <td>V5</td> </tr> </table>	M	Data	DISP	On	L	H	H	V0	H	L	H	V1	L	L	H	V4	H	H	H	V5	*	*	L	V5				
		M	Data	DISP	On																									
		L	H	H	V0																									
		H	L	H	V1																									
		L	L	H	V4																									
H	H	H	V5																											
*	*	L	V5																											
* : Don't care. (Must be held either high or low.)																														
V0	I	V0 level drive voltage supply (selected level)																												
V1	I	V1 level drive voltage supply (unselected level)																												
V4	I	V4 level drive voltage supply (unselected level)																												
V5	I	V5 level drive voltage supply (selected level)																												
		} Pins with the same name must be set to the same potential.																												
VDDH	-	High-voltage system power supply. Pins with the same name must be set to the same potential.																												
VSSH	-	High-voltage system ground. Pins with the same name must be set to the same potential.																												
DISP	I	LCD off function. All outputs go to the V5 level when this pin is low.																												
M	I	Alternation signal input.																												
CP	I	Data shift pulse input (falling edge).																												
MODE	I	<table border="1" style="margin-left: 20px;"> <thead> <tr> <th>MODE</th> <th>RS/LS</th> <th>Data transfer direction</th> <th>DIO1</th> <th>DIO160</th> <th>DMIN</th> </tr> </thead> <tbody> <tr> <td rowspan="2">L</td> <td>L</td> <td>O160 → O1</td> <td>Out</td> <td>In</td> <td></td> </tr> <tr> <td>H</td> <td>O1 → O160</td> <td>In</td> <td>Out</td> <td></td> </tr> <tr> <td rowspan="2">H</td> <td>L</td> <td>O160 → O81 O80 → O1</td> <td>Out</td> <td>In</td> <td>In</td> </tr> <tr> <td>H</td> <td>O1 → O80 O81 → O160</td> <td>In</td> <td>Out</td> <td>In</td> </tr> </tbody> </table>	MODE	RS/LS	Data transfer direction	DIO1	DIO160	DMIN	L	L	O160 → O1	Out	In		H	O1 → O160	In	Out		H	L	O160 → O81 O80 → O1	Out	In	In	H	O1 → O80 O81 → O160	In	Out	In
MODE	RS/LS		Data transfer direction	DIO1	DIO160	DMIN																								
L	L		O160 → O1	Out	In																									
	H		O1 → O160	In	Out																									
H	L	O160 → O81 O80 → O1	Out	In	In																									
	H	O1 → O80 O81 → O160	In	Out	In																									
RS/LS	I																													
DIO1	I/O																													
DMIN	I																													
DIO160	I/O																													
		* : Don't care. (Must be held either high or low.)																												
VDD	-	Logic system power supply																												
VSS	-	Logic system ground																												

Pin Assignment

O1 O2 O3 O158 O159 O160

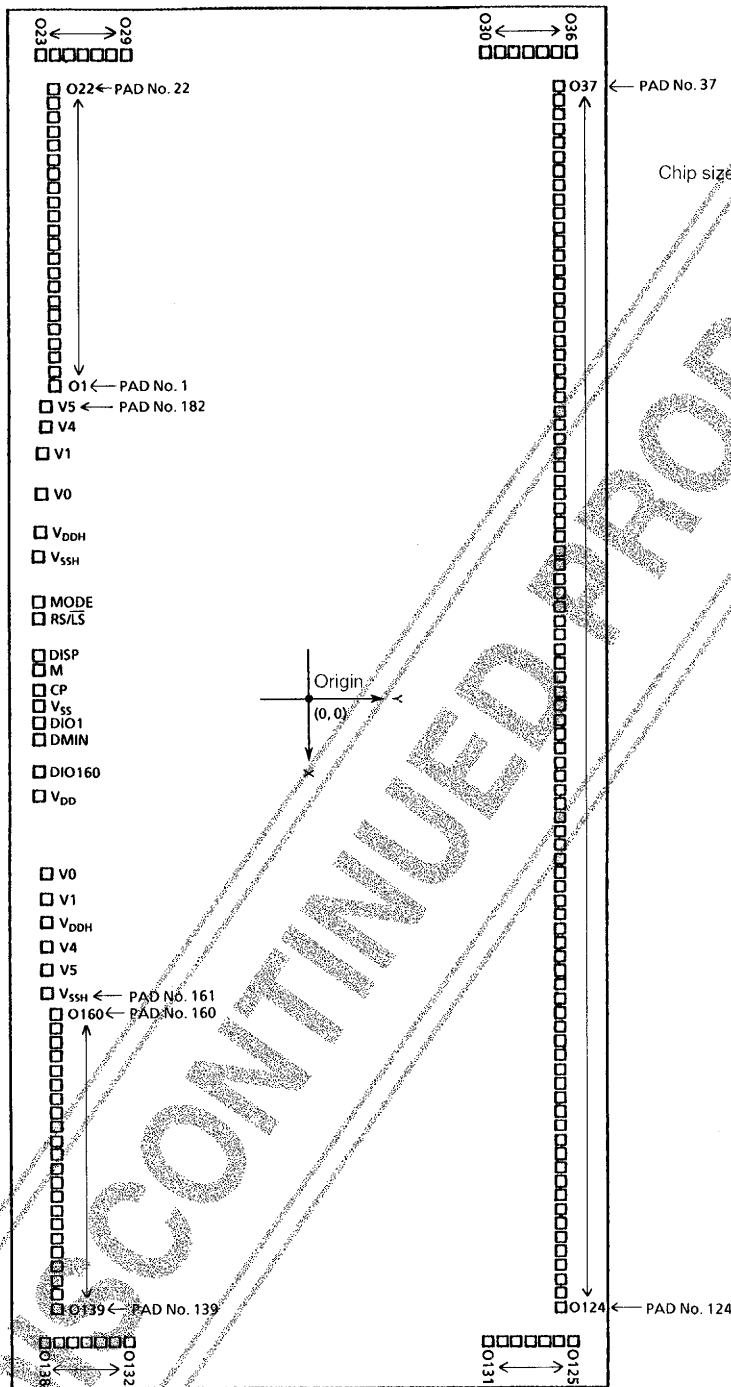


Note: This figure shows the pins when viewing the chip pattern surface from above.
 This figure shows the pins when viewing the chip from the copper foil side.
 This figure does not stipulate the TAB package dimensions.

V5
V4
V1
V0
VDDH
VSSH
MODE
RS/LS
DISP
M
CP
VSS
DIO1
DMIN
DIO160
VDD
V0
V1
VDDH
V4
V5
VSSH

LC4103TAB-01, 4103TAB-02, 4103C

Pin Assignment



LC4103TAB-01, 4103TAB-02, 4103C

Pad Coordinates

PAD No.	Signal	X coordinate	Y coordinate	PAD No.	Signal	X coordinate	Y coordinate
1	O1	-1800.0	-1425.2	41	O41	-3160.0	1429.2
2	O2	-1880.0	-1425.2	42	O42	-3080.0	1429.2
3	O3	1960.0	-1425.2	43	O43	-3000.0	1429.2
4	O4	-2040.0	-1425.2	44	O44	-2920.0	1429.2
5	O5	-2120.0	-1425.2	45	O45	-2840.0	1429.2
6	O6	-2200.0	-1425.2	46	O46	-2760.0	1429.2
7	O7	-2280.0	-1425.2	47	O47	-2680.0	1429.2
8	O8	-2360.0	-1425.2	48	O48	-2600.0	1429.2
9	O9	-2440.0	-1425.2	49	O49	-2520.0	1429.2
10	O10	-2520.0	-1425.2	50	O50	-2440.0	1429.2
11	O11	-2600.0	-1425.2	51	O51	-2360.0	1429.2
12	O12	-2680.0	-1425.2	52	O52	-2280.0	1429.2
13	O13	-2760.0	-1425.2	53	O53	-2200.0	1429.2
14	O14	-2840.0	-1425.2	54	O54	-2120.0	1429.2
15	O15	-2920.0	-1425.2	55	O55	-2040.0	1429.2
16	O16	-3000.0	-1425.2	56	O56	-1960.0	1429.2
17	O17	-3080.0	-1425.2	57	O57	-1880.0	1429.2
18	O18	-3160.0	-1425.2	58	O58	-1800.0	1429.2
19	O19	-3240.0	-1425.2	59	O59	-1720.0	1429.2
20	O20	-3320.0	-1425.2	60	O60	-1640.0	1429.2
21	O21	-3400.0	-1425.2	61	O61	-1560.0	1429.2
22	O22	-3480.0	-1425.2	62	O62	-1480.0	1429.2
23	O23	-3673.0	-1497.6	63	O63	-1400.0	1429.2
24	O24	-3673.0	-1417.6	64	O64	-1320.0	1429.2
25	O25	-3673.0	-1337.6	65	O65	-1240.0	1429.2
26	O26	-3673.0	-1257.6	66	O66	-1160.0	1429.2
27	O27	-3673.0	-1177.6	67	O67	-1080.0	1429.2
28	O28	-3673.0	-1097.6	68	O68	-1000.0	1429.2
29	O29	-3673.0	-1017.6	69	O69	-920.0	1429.2
30	O30	-3673.0	1017.6	70	O70	-840.0	1429.2
31	O31	-3673.0	1097.6	71	O71	-760.0	1429.2
32	O32	-3673.0	1177.6	72	O72	-680.0	1429.2
33	O33	-3673.0	1257.6	73	O73	-600.0	1429.2
34	O34	-3673.0	1337.6	74	O74	-520.0	1429.2
35	O35	-3673.0	1417.6	75	O75	-440.0	1429.2
36	O36	-3673.0	1497.6	76	O76	-360.0	1429.2
37	O37	-3480.0	1429.2	77	O77	-280.0	1429.2
38	O38	-3400.0	1429.2	78	O78	-200.0	1429.2
39	O39	-3320.0	1429.2	79	O79	-120.0	1429.2
40	O40	-3240.0	1429.2	80	O80	-40.0	1429.2

Continued on next page.

DISCONTINUED

LC4103TAB-01, 4103TAB-02, 4103C

Continued from preceding page.

PAD No.	Signal	X coordinate	Y coordinate	PAD No.	Signal	X coordinate	Y coordinate
81	O81	40.0	1429.2	121	O121	3240.0	1429.2
82	O82	120.0	1429.2	122	O122	3320.0	1429.2
83	O83	200.0	1429.2	123	O123	3400.0	1429.2
84	O84	280.0	1429.2	124	O124	3480.0	1429.2
85	O85	360.0	1429.2	125	O125	3673.0	1497.6
86	O86	440.0	1429.2	126	O126	3673.0	1417.6
87	O87	520.0	1429.2	127	O127	3673.0	1337.6
88	O88	600.0	1429.2	128	O128	3673.0	1257.6
89	O89	680.0	1429.2	129	O129	3673.0	1177.6
90	O90	760.0	1429.2	130	O130	3673.0	1097.6
91	O91	840.0	1429.2	131	O131	3673.0	1017.6
92	O92	920.0	1429.2	132	O132	3673.0	-1017.6
93	O93	1000.0	1429.2	133	O133	3673.0	-1097.6
94	O94	1080.0	1429.2	134	O134	3673.0	-1177.6
95	O95	1160.0	1429.2	135	O135	3673.0	-1257.6
96	O96	1240.0	1429.2	136	O136	3673.0	-1337.6
97	O97	1320.0	1429.2	137	O137	3673.0	-1417.6
98	O98	1400.0	1429.2	138	O138	3673.0	-1497.6
99	O99	1480.0	1429.2	139	O139	3480.0	-1425.2
100	O100	1560.0	1429.2	140	O140	3400.0	-1425.2
101	O101	1640.0	1429.2	141	O141	3320.0	-1425.2
102	O102	1720.0	1429.2	142	O142	3240.0	-1425.2
103	O103	1800.0	1429.2	143	O143	3160.0	-1425.2
104	O104	1880.0	1429.2	144	O144	3080.0	-1425.2
105	O105	1960.0	1429.2	145	O145	3000.0	-1425.2
106	O106	2040.0	1429.2	146	O146	2920.0	-1425.2
107	O107	2120.0	1429.2	147	O147	2840.0	-1425.2
108	O108	2200.0	1429.2	148	O148	2760.0	-1425.2
109	O109	2280.0	1429.2	149	O149	2680.0	-1425.2
110	O110	2360.0	1429.2	150	O150	2600.0	-1425.2
111	O111	2440.0	1429.2	151	O151	2520.0	-1425.2
112	O112	2520.0	1429.2	152	O152	2440.0	-1425.2
113	O113	2600.0	1429.2	153	O153	2360.0	-1425.2
114	O114	2680.0	1429.2	154	O154	2280.0	-1425.2
115	O115	2760.0	1429.2	155	O155	2200.0	-1425.2
116	O116	2840.0	1429.2	156	O156	2120.0	-1425.2
117	O117	2920.0	1429.2	157	O157	2040.0	-1425.2
118	O118	3000.0	1429.2	158	O158	1960.0	-1425.2
119	O119	3080.0	1429.2	159	O159	1880.0	-1425.2
120	O120	3160.0	1429.2	160	O160	1800.0	-1425.2

Continued on next page.

DISCONTINUED

Continued from preceding page.

PAD No.	Signal	X coordinate	Y coordinate
161	V _{SSH}	1682.0	-1473.7
162	V5	1547.0	-1473.7
163	V4	1412.0	-1473.7
164	V _{DDH}	1277.0	-1473.7
165	V1	1142.0	-1473.7
166	V0	993.0	-1473.7
167	V _{DD}	544.0	-1522.7
168	DIO160	403.6	-1522.7
169	DMIN	217.5	-1522.7
170	DIO1	122.5	-1522.7
171	V _{SS}	27.5	-1522.7
172	CP	-57.5	-1522.7
173	M	-172.5	-1522.7
174	DISP	-257.5	-1522.7
175	RS/L _S	-468.6	-1522.7
176	MODE	-563.6	-1522.7
177	V _{SSH}	-821.6	-1523.7
178	V _{DDH}	-959.0	-1507.7
179	V0	-1178.0	-1503.7
180	V1	-1412.0	-1493.7
181	V4	-1567.0	-1473.7
182	V5	-1682.0	-1473.7

- Specifications of any and all SANYO products described or contained herein stipulate the performance, characteristics, and functions of the described products in the independent state, and are not guarantees of the performance, characteristics, and functions of the described products as mounted in the customer's products or equipment. To verify symptoms and states that cannot be evaluated in an independent device, the customer should always evaluate and test devices mounted in the customer's products or equipment.
- SANYO Electric Co., Ltd. strives to supply high-quality high-reliability products. However, any and all semiconductor products fail with some probability. It is possible that these probabilistic failures could give rise to accidents or events that could endanger human lives, that could give rise to smoke or fire, or that could cause damage to other property. When designing equipment, adopt safety measures so that these kinds of accidents or events cannot occur. Such measures include but are not limited to protective circuits and error prevention circuits for safe design, redundant design, and structural design.
- In the event that any or all SANYO products (including technical data, services) described or contained herein are controlled under any of applicable local export control laws and regulations, such products must not be exported without obtaining the export license from the authorities concerned in accordance with the above law.
- No part of this publication may be reproduced or transmitted in any form or by any means, electronic or mechanical, including photocopying and recording, or any information storage or retrieval system, or otherwise, without the prior written permission of SANYO Electric Co., Ltd.
- Any and all information described or contained herein are subject to change without notice due to product/technology improvement, etc. When designing equipment, refer to the "Delivery Specification" for the SANYO product that you intend to use.
- Information (including circuit diagrams and circuit parameters) herein is for example only ; it is not guaranteed for volume production. SANYO believes information herein is accurate and reliable, but no guarantees are made or implied regarding its use or any infringements of intellectual property rights or other rights of third parties.

This catalog provides information as of June, 2001. Specifications and information herein are subject to change without notice.