

DM74H00(SN74H00) quad 2-input NAND gate

DM74H04(SN74H04) hex inverter

DM74H10(SN74H10) triple 3-input NAND gate

DM74H20(SN74H20) dual 4-input NAND gate

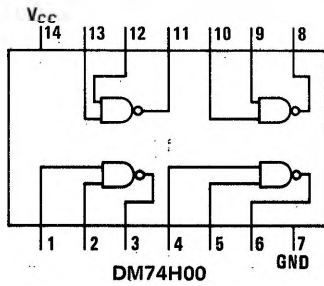
DM74H30(SN74H30) 8-input NAND gate

general description

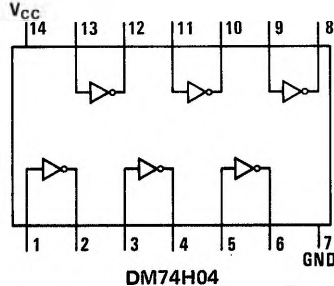
These TTL gates and inverter operate with about half the typical propagation delays of the same logic functions in Series 74 and have higher current ratings. However, the two series are completely compatible and may be used in combination. Key features are:

- Typical propagation delays down to 6 ns
- Typical DC noise margin of 1V and low susceptibility to AC noise
- Fanout of 10 Series 74H loads and 12 Series 74 loads.

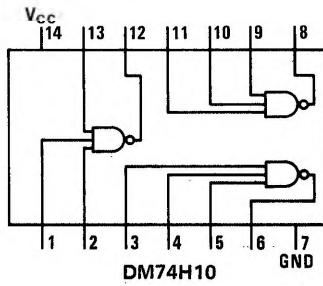
connection diagrams



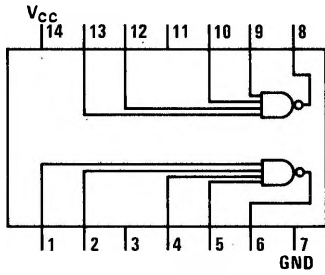
DM74H00



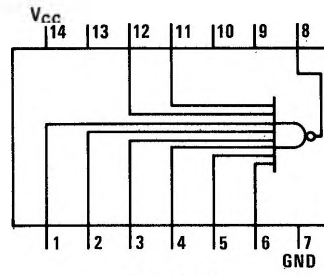
DM74H04



DM74H10



DM74H20



DM74H30