



2104A FAMILY 4096 x 1 BIT DYNAMIC RAM

	2104A-1	2104A-2	2104A-3	2104A-4
Max. Access Time (ns)	150	200	250	300
Read, Write Cycle (ns)	320	320	375	425
Max. IDD (mA)	35	32	30	30

- **Highest Density 4K RAM Industry Standard 16 Pin Package**
 - **Low Power 4K RAM**
 - **All Inputs Including Clocks TTL Compatible**
 - **±10% Tolerance on All Power Supplies +12V, +5V, -5V**
- **Refresh Period: 2 ms**
 - **On-Chip Latches for Addresses, Chip Select and Data In**
 - **Simple Memory Expansion: Chip Select**
 - **Output is Three-State, TTL Compatible; Data is Latched and Valid into Next Cycle**
 - **Compatible with Intel® 2116 16K RAM**

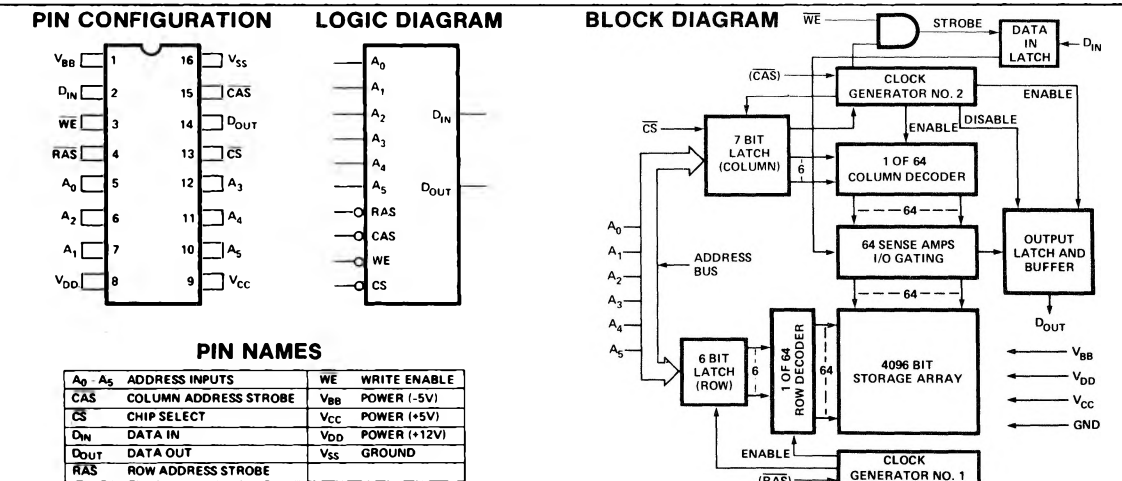
The Intel® 2104A is a 4096 word by 1 bit MOSRAM fabricated with N-channel silicon gate technology for high performance and high functional density.

The efficient design of the 2104A allows it to be packaged in the industry standard 16 pin dual-in-line package. The 16 pin package provides the highest system bit densities and is compatible with widely available automated handling equipment.

The use of the 16 pin package is made possible by multiplexing the 12 address bits (required to address 1 of 4096 bits) into the 2104A on 6 address input pins. The two 6 bit address words are latched into the 2104A by the two TTL clocks, Row Address Strobe (RAS) and Column Address Strobe (CAS). Non-critical clock timing requirements allow use of the multiplexing technique while maintaining high performance.

A new unique dynamic storage cell provides high speed along with low power dissipation and wide voltage margins. The memory cell requires refreshing for data retention. Refreshing is most easily accomplished by performing a read cycle at each of the 64 row addresses every 2 milliseconds.

The 2104A is designed for page mode operation, "RAS-only refreshing," and "CAS-only deselection." Thus it is compatible with the Intel® 2116, 16K RAM.



2104A FAMILY

ABSOLUTE MAXIMUM RATINGS*

Ambient Temperature Under Bias	-10°C to +80°C
Storage Temperature	-65°C to +150°C
Voltage on any Pin Relative to V _{BB}	(V _{SS} - V _{BB} ≥ 4.5V) -0.3V to +20V
Power Dissipation	1.0W
Data Out Current	50 mA

*COMMENT:

Stresses above those listed under "Absolute Maximum Ratings" may cause permanent damage to the device. This is a stress rating only and functional operation of the device at these or any other conditions above those indicated in the operational sections of this specification is not implied. Exposure to absolute maximum rating conditions for extended periods may affect device reliability.

D.C. AND OPERATING CHARACTERISTICS^[1]

T_A = 0° to 70°C, V_{DD} = +12V ±10%, V_{CC} = +5V ±10%, V_{BB} = -5V ±10%, V_{SS} = 0V, unless otherwise noted.

Symbol	Parameter	Limits			Unit	Conditions
		Min.	Typ. (2)	Max.		
I _{LI}	Input Load Current (any input)			10	μA	V _{IN} = V _{IL} MIN to V _{IH} MAX
I _{LO}	Output Leakage Current for High Impedance State			10	μA	Chip deselected: RAS and CAS at V _{IH} V _{OUT} = 0 to 5.5V
I _{DD1} ^[3]	V _{DD} Standby Current		0.7	2	mA	V _{DD} = 13.2V
			0.7	1.5	mA	V _{DD} = 12.6V
I _{BB1}	V _{BB} Standby Current		5	50	μA	V _{DD} = 13.2V See Note 5.
I _{DD2} ^[3]	Operating V _{DD} Current (Device Selected)		24	35	mA	2104A-1 t _{CYC} = 320 ns
			22	32	mA	2104A-2 t _{CYC} = 320 ns
			20	30	mA	2104A-3, 4 t _{CYC} = 375 ns
I _{BB2}	Operating V _{BB} Current		160	400	μA	Device Selected. Min cycle time.
I _{CC1} ^[4]	V _{CC} Supply Current when Deselected			10	μA	
I _{DD3}	Operating V _{DD} Current (RAS-only cycle)		12	25	mA	2104A-1, 2 t _{CYC} = 320 ns
			10	22	mA	2104A-3, 4 t _{CYC} = 375 ns
V _{IL}	Input Low Voltage (any input)	-1.0		0.8	V	
V _{IH}	Input High Voltage	2.4		7.0	V	
V _{OL}	Output Low Voltage	0.0		0.4	V	I _{OL} = 3.2 mA
V _{OH}	Output High Voltage	2.4		V _{CC}	V	I _{OH} = -5 mA

CAPACITANCE^[6] T_A = 25°C

Symbol	Test	Typ.	Max.	Unit	Conditions
C ₁₁	Input Capacitance (A ₀ -A ₅), D _{IN} , \overline{CS}	3	7	pF	V _{IN} = V _{SS}
C ₁₂	Input Capacitance \overline{RAS} , \overline{WRITE}	3	7	pF	V _{IN} = V _{SS}
C ₀	Output Capacitance (D _{OUT})	4	7	pF	V _{OUT} = 0V
C ₁₃	Input Capacitance \overline{CAS}	6	7	pF	V _{IN} = V _{SS}

- Notes:
- All voltages referenced to V_{SS}. The only requirement for the sequence of applying voltages to the device is that V_{DD}, V_{CC}, and V_{SS} should never be 0.3V or more negative than V_{BB}. After the application of supply voltages or after extended periods of operation without clocks, the device must perform a minimum of one initialization cycle (any valid memory cycles containing both RAS and CAS) prior to normal operation.
 - Typical values are for T_A = 25°C and nominal power supply voltages.
 - The I_{DD} current flows to V_{SS}.
 - When chip is selected V_{CC} supply current is dependent on output loading. V_{CC} is connected to output buffer only.
 - The chip is deselected; i.e., output is brought to high impedance state by \overline{CAS} -only cycle or by a read cycle with \overline{CS} at V_{IH}.
 - Capacitance measured with Boonton Meter.

2104A FAMILY

A.C.CHARACTERISTICS^[1]

$T_A = 0^\circ\text{C}$ to 70°C , $V_{DD} = 12\text{V} \pm 10\%$, $V_{CC} = 5\text{V} \pm 10\%$, $V_{BB} = -5\text{V} \pm 10\%$, $V_{SS} = 0\text{V}$, unless otherwise noted.

READ, WRITE, AND READ MODIFY WRITE CYCLES

Symbol	Parameter	2104A-1		2104A-2		2104A-3		2104A-4		Unit
		Min.	Max.	Min.	Max.	Min.	Max.	Min.	Max.	
t_{REF}	Time Between Refresh		2		2		2		2	ms
t_{RP}	RAS Precharge Time	100		115		115		125		ns
t_{CP}	CAS Precharge Time	60		80		110		110		ns
$t_{RCL}^{[2]}$	RAS to CAS Leading Edge Lead Time	20	50	25	70	35	110	80	135	ns
t_{CRP}	CAS to RAS Precharge Time	0		0		0		0		ns
t_{RSH}	RAS Hold Time	100		130		140		165		ns
t_{CSH}	CAS Hold Time	150		200		250		300		ns
t_{AR}	RAS to Address or CS Hold Time	95		120		160		215		ns
t_{ASR}	Row Address Set-Up Time	0		0		0		0		ns
t_{ASC}	Column Address or CS Set-Up Time	-5		0		0		0		ns
t_{RAH}	Row Address Hold Time	20		25		35		80		ns
t_{CAH}	Column Address or CS Hold Time	45		50		50		80		ns
t_T	Rise or Fall Time		50		50		50		50	ns
t_{OFF}	Output Buffer Turn-Off Delay	0	50	0	60	0	60	0	80	ns
$t_{CAC}^{[3]}$	Access Time From CAS		100		130		140		165	ns
$t_{RAC}^{[3]}$	Access Time From RAS		150		200		250		300	ns

READ CYCLE

Symbol	Parameter	2104A-1		2104A-2		2104A-3		2104A-4		Unit
		Min.	Max.	Min.	Max.	Min.	Max.	Min.	Max.	
t_{RC}	Random Read or Write Cycle Time	320		320		375		425		ns
t_{RAS}	RAS Pulse Width	150	32000	200	32000	250	32000	300	32000	ns
t_{CAS}	CAS Pulse Width	100		130		140		165		ns
t_{RCS}	Read Command Set-Up Time	0		0		0		0		ns
t_{RCH}	Read Command Hold Time	0		0		0		0		ns
t_{DOH}	Data Out Hold Time	32		32		32		32		μs

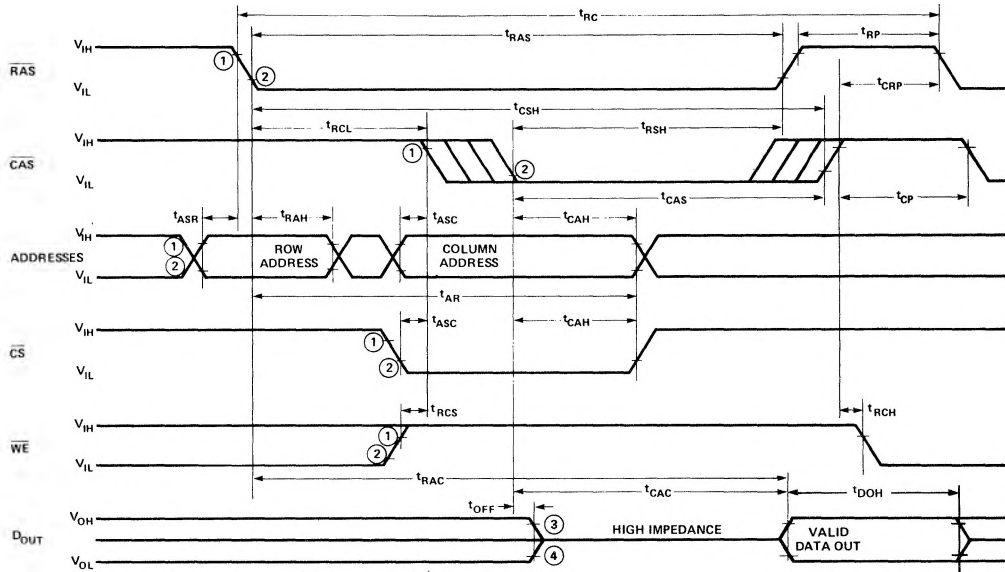
WRITE CYCLE^[4]

Symbol	Parameter	2104A-1		2104A-2		2104A-3		2104A-4		Unit
		Min.	Max.	Min.	Max.	Min.	Max.	Min.	Max.	
t_{RC}	Random Read or Write Cycle Time	320		320		375		425		ns
t_{RAS}	RAS Pulse Width	150	32000	200	32000	250	32000	300	32000	ns
t_{CAS}	CAS Pulse Width	100		130		140		165		ns
t_{WCS}	Write Command Set-Up Time	0		0		0		0		ns
t_{WCH}	Write Command Hold Time	55		75		75		80		ns
t_{WCR}	Write Command Hold Time Referenced to RAS	105		145		185		215		ns
t_{WP}	Write Command Pulse Width	45		55		75		80		ns
t_{RWL}	Write Command to RAS Lead Time	100		130		140		150		ns
t_{CWL}	Write Command to CAS Lead Time	100		130		140		150		ns
t_{DS}	Data-In Set-Up Time	0		0		0		0		ns
t_{DH}	Data-In Hold Time	55		75		75		80		ns
t_{DHR}	Data-In Hold Time Referenced to RAS	105		145		185		215		ns

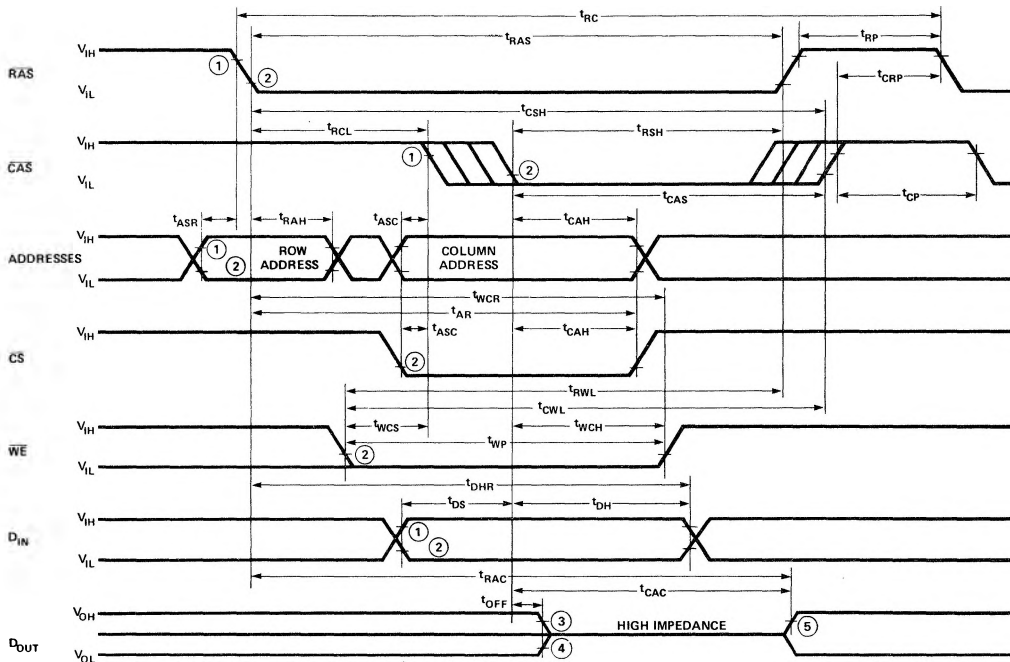
- Notes:
- All voltages referenced to V_{SS} . Minimum timings do not allow for t_T or skews.
 - CAS must remain at V_{IH} a minimum of t_{RCL} MIN after RAS switches to V_{IL} . To achieve the minimum guaranteed access time (t_{RAC}), CAS must switch to V_{IL} at or before t_{RCL} of $t_{RAC} - t_T - t_{CAC}$ as described in the Applications Information on page 2-45. t_{RCL} MAX is given for reference only as $t_{RAC} - t_{CAC}$.
 - Load = 2 TTL and 100 pF. See Applications Information.
 - In a write cycle D_{OUT} latch will contain data written into cell. In a read-modify-write cycle D_{OUT} latch will contain data read from cell. If \overline{WE} goes low after CAS and prior to t_{CAC} , D_{OUT} is indeterminate.

WAVEFORMS

READ CYCLE



WRITE CYCLE



(See page 2-44 for notes)

2104A FAMILY

A.C.CHARACTERISTICS^[1]

$T_A = 0^\circ$ to 70°C , $V_{DD}=12\text{V} \pm 10\%$, $V_{CC}=5\text{V} \pm 10\%$, $V_{BB}=-5\text{V} \pm 10\%$, $V_{SS}=0\text{V}$, unless otherwise noted.

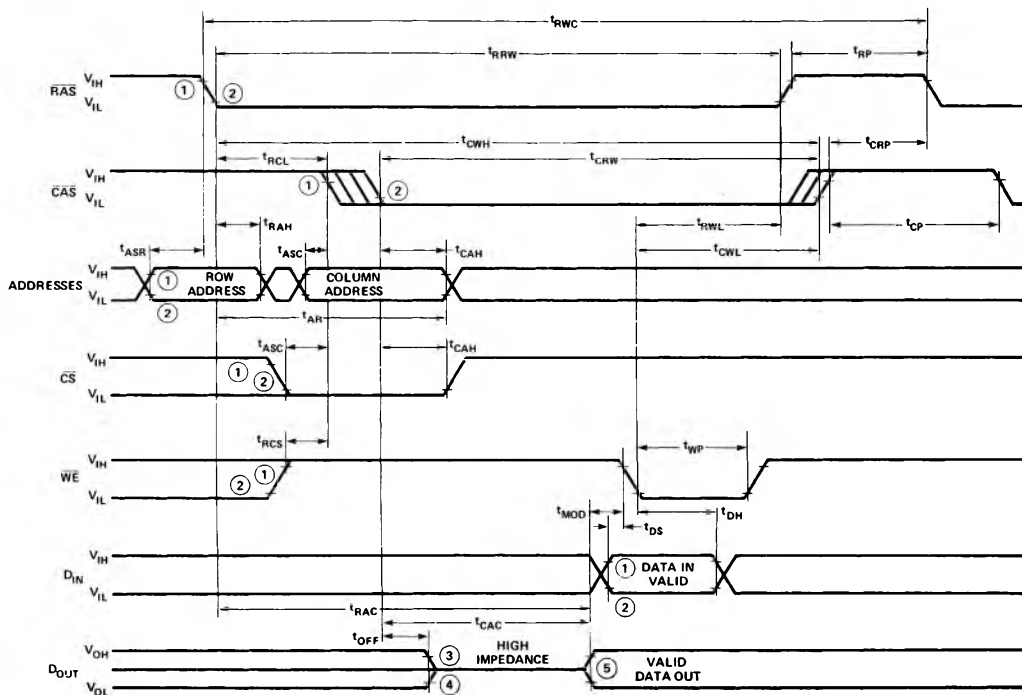
READ-MODIFY-WRITE CYCLE

Symbol	Parameter	2104A-1		2104A-2		2104A-3		2104A-4		Unit
		Min.	Max.	Min.	Max.	Min.	Max.	Min.	Max.	
t_{RWC}	Read Modify Write Cycle Time ^[2]	350		445		505		575		ns
t_{CRW}	RMW Cycle $\overline{\text{CAS}}$ Width	200		260		280		315		ns
t_{RRW}	RMW Cycle $\overline{\text{RAS}}$ Width	250		330		390		450		ns
t_{RWL}	RMW Cycle $\overline{\text{RAS}}$ Lead Time	100		130		140		150		ns
t_{CWH}	RMW Cycle $\overline{\text{CAS}}$ Hold Time	250		330		390		450		ns
t_{CWL}	Write Command to $\overline{\text{CAS}}$ Lead Time	100		130		140		150		ns
t_{WP}	Write Command Pulse Width	45		55		75		80		ns
t_{RCS}	Read Command Set-Up Time	0		0		0		0		ns
t_{MOD}	Modify Time	0	10	0	10	0	10	0	10	μs
t_{DS}	Data-In Set-Up Time	0		0		0		0		ns
t_{DH}	Data-In Hold Time	55		75		75		80		ns

- Notes: 1. All voltages referenced to V_{SS} .
2. The minimum cycle timing does not allow for t_T or skews.

WAVEFORMS

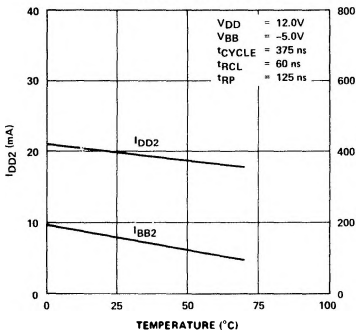
READ-MODIFY-WRITE CYCLE



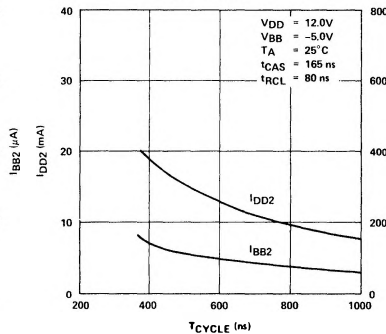
- Notes: 1,2. V_{IHMIN} and V_{ILMAX} are reference levels for measuring timing of input signals.
3,4. V_{OHMIN} and V_{OLMAX} are reference levels for measuring timing of D_{OUT} .
5. In a write cycle D_{OUT} latch will contain data written into cell. In a read-modify-write cycle D_{OUT} latch will contain data read from cell. If $\overline{\text{WE}}$ goes low after $\overline{\text{CAS}}$ and prior to t_{CAC} , D_{OUT} is indeterminate.

TYPICAL CHARACTERISTICS

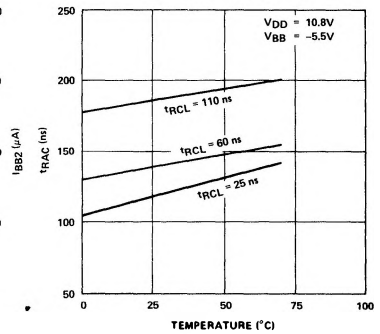
TYPICAL I_{BB2} AND I_{DD2} VS. TEMPERATURE



TYPICAL I_{BB2} AND I_{DD2} VS. CYCLE TIME



TYPICAL ACCESS TIME VS. TEMPERATURE



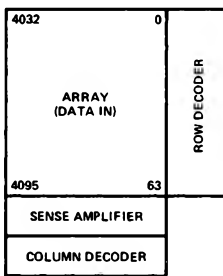
APPLICATIONS

ADDRESSING

Two externally applied negative going TTL clocks, Row Address Strobe (\overline{RAS}), and Column Address Strobe (\overline{CAS}), are used to strobe the two sets of 6 addresses into internal address buffer registers. The first clock, \overline{RAS} , strobes in the six low order addresses (A_0-A_5) which selects one of 64 rows and begins the timing which enables the column sense amplifiers. The second clock, \overline{CAS} , strobes in the six high order addresses (A_6-A_{11}) to select one of 64 column sense amplifiers and Chip Select (\overline{CS}) which enables the data out buffer.

An address map of the 2104A is shown below. Address "0" corresponds to all addresses at V_{IL} . All addresses are sequentially located on the chip.

2104A Address Map



DATA CYCLES/TIMING

A memory cycle begins with addresses stable and a negative transition of \overline{RAS} . See the waveforms on page 4. It is not necessary to know whether a Read or Write cycle is to be performed until \overline{CAS} becomes valid.

Note that Chip Select (\overline{CS}) does not have to be valid until the second clock, \overline{CAS} . It is, therefore, possible to start a memory cycle before it is known which device must be selected. This can result in a significant improvement in

system access time since the decode time for chip select does not enter into the calculation for access time.

Both the \overline{RAS} and \overline{CAS} clocks are TTL compatible and do not require level shifting and driving at high voltage MOS levels. Buffers internal to the 2104A convert the TTL level signals to MOS levels inside the device. Therefore, the delay associated with external TTL-MOS level converters is not added to the 2104A system access time.

READ CYCLE

A Read cycle is performed by maintaining Write Enable (\overline{WE}) high during \overline{CAS} . The output pin of a selected device will unconditionally go to a high impedance state immediately following the leading edge of \overline{CAS} and remain in this state until valid data appears at the output at access time. The selected output data is internally latched and will remain valid until a subsequent \overline{CAS} is given to the device by a Read, Write, Read-Modify-Write, \overline{CAS} only or Refresh cycle. Data-out goes to a high impedance state for all non-selected devices.

Device access time, t_{ACC} , is the longer of two calculated intervals:

$$1. t_{ACC} = t_{RAC} \text{ OR } 2. t_{ACC} = t_{RCL} + t_t + t_{CAC}$$

Access time from \overline{RAS} , t_{RAC} , and access time from \overline{CAS} , t_{CAC} , are device parameters. Row to column address strobe lead time, t_{RCL} , and transition time, t_t , are system dependent timing parameters. For example, substituting the device parameters of the 2104A-4 and assuming a TTL level transition time of 5 ns yields:

$$3. t_{ACC} = t_{RAC} = 300ns \text{ for } 80 \text{ nsec} \leq t_{RCL} \leq 130\text{nsec}$$

OR

$$4. t_{ACC} = t_{RCL} + t_t + t_{CAC} = t_{RCL} + 170ns \text{ for } t_{RCL} > 130ns.$$

Note that if $80 \text{ nsec} \leq t_{RCL} \leq 130 \text{ nsec}$, device access time is determined by equation 3 and is equal to t_{RAC} . If $t_{RCL} > 130 \text{ nsec}$, access time is determined by equation 4. This 50ns interval (shown in the t_{RCL} inequality in equation 3) in which the falling edge of $\overline{\text{CAS}}$ can occur without affecting access time is provided to allow for system timing skew in the generation of $\overline{\text{CAS}}$. This allowance for a t_{RCL} skew is designed in at the device level to allow minimum access times to be achieved in practical system designs.

WRITE CYCLE

A Write Cycle is generally performed by bringing Write Enable ($\overline{\text{WE}}$) low before $\overline{\text{CAS}}$. D_{OUT} will be the data written into the cell addressed. If $\overline{\text{WE}}$ goes low after $\overline{\text{CAS}}$ and prior to t_{CAC} , D_{OUT} will be indeterminate.

READ-MODIFY-WRITE CYCLE

A Read-Modify-Write Cycle is performed by bringing Write Enable ($\overline{\text{WE}}$) low after access time, t_{RAC} , with $\overline{\text{RAS}}$ and $\overline{\text{CAS}}$ low. Data in must be valid at or before the falling edge of $\overline{\text{WE}}$. In a read-modify-write cycle D_{OUT} is data read and does not change during the modify-write portion of the cycle.

$\overline{\text{CAS}}$ ONLY (DESELECT) CYCLE

In some applications, it is desirable to be able to deselect all memory devices without running a regular memory cycle. This may be accomplished with the 2104A by performing a $\overline{\text{CAS}}$ -Only Cycle. Receipt of a $\overline{\text{CAS}}$ without $\overline{\text{RAS}}$ deselects the 2104A and forces the Data Output to the high-impedance state. This places the 2104A in its lowest power, standby condition. I_{DD} will be about twice I_{DD1} for the first cycle of $\overline{\text{CAS}}$ -only deselection and I_{DD1} for any additional $\overline{\text{CAS}}$ -only cycles. The cycle timing and $\overline{\text{CAS}}$ timing should be just as if a normal $\overline{\text{RAS}}/\overline{\text{CAS}}$ cycle was being performed.

CHIP SELECTION/DESELECTION

The 2104A is selected by driving $\overline{\text{CS}}$ low during a Read,

Write, or Read-Modify-Write cycle. A device is deselected by 1) driving $\overline{\text{CS}}$ high during a Read, Write, or Read-Modify-Write cycle or 2) performing a $\overline{\text{CAS}}$ Only cycle independent of the state of $\overline{\text{CS}}$.

REFRESH CYCLES

Each of the 64 rows internal to the 2104A must be refreshed every 2 msec to maintain data. Any data cycle (Read, Write, Read-Modify-Write) refreshes the entire selected row (defined by the low order row addresses). The refresh operation is independent of the state of chip select. It is evident, of course, that if a Write or Read-Modify-Write cycle is used to refresh a row, the device should be deselected ($\overline{\text{CS}}$ high) if it is desired not to change the state of the selected cell.

$\overline{\text{RAS}}/\overline{\text{CAS}}$ TIMING

The device clocks, $\overline{\text{RAS}}$ and $\overline{\text{CAS}}$, control operation of the 2104A. The timing of each clock and the timing relationships of the two clocks must be understood by the user in order to obtain maximum performance in a memory system.

The $\overline{\text{RAS}}$ and $\overline{\text{CAS}}$ have minimum pulse widths as defined by t_{RAS} and t_{CAS} respectively. These minimum pulse widths must be maintained for proper device operation and data integrity. A cycle, once begun by driving $\overline{\text{RAS}}$ and/or $\overline{\text{CAS}}$ low must not be ended or aborted prior to fulfilling the minimum clock signal pulse width(s). A new cycle must not begin until the minimum precharge time, t_{RP} , has been met.

PAGE MODE OPERATION

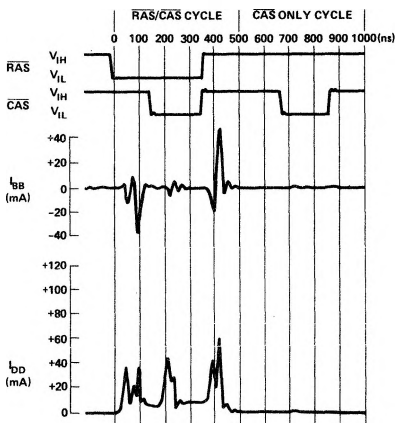
The 2104A is designed for page mode operation and is presently being characterized for that mode. Specifications will be available at a later date.

POWER SUPPLY

Typical power supply current waveforms versus time are shown below for both a $\overline{\text{RAS}}/\overline{\text{CAS}}$ cycle and a $\overline{\text{CAS}}$ only cycle. I_{DD} and I_{BB} current surges at $\overline{\text{RAS}}$ and $\overline{\text{CAS}}$ edges make adequate decoupling of these supplies important. Due to the high frequency noise component content of the current waveforms, the decoupling capacitors should be low inductance, ceramic units selected for their high frequency performance.

It is recommended that a 0.1 μF ceramic capacitor be connected between V_{DD} and V_{SS} at every other device in the memory array. A 0.1 μF ceramic capacitor should also be connected between V_{BB} and V_{SS} at every other device (preferably the alternate devices to the V_{DD} decoupling). For each 16 devices, a 10 μF tantalum or equivalent capacitor should be connected between V_{DD} and V_{SS} near the array. An equal or slightly smaller bulk capacitor is also recommended between V_{BB} and V_{SS} for every 32 devices.

A 0.01 μF ceramic capacitor is recommended between V_{CC} and V_{SS} at every eighth device to prevent noise coupling to the V_{CC} line which may affect the TTL peripheral logic in the system.

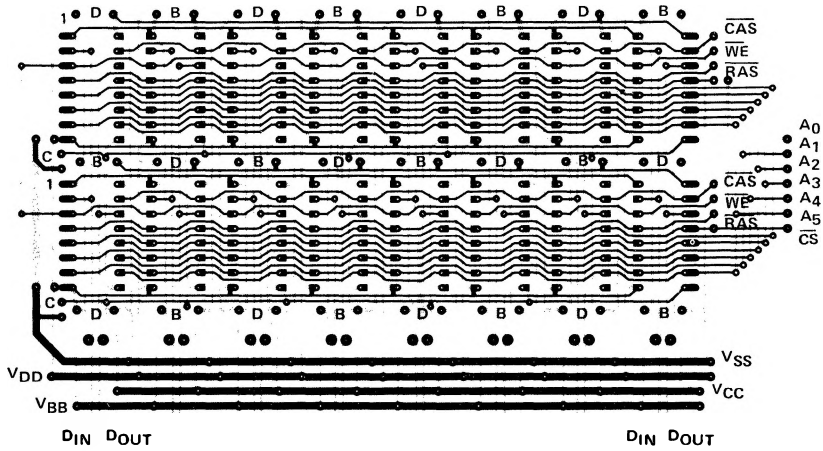


TYPICAL SUPPLY CURRENTS VS. TIME

2104A FAMILY

Due to the high frequency characteristics of the current waveforms, the inductance of the power supply distribution system on the array board should be minimized. It is recommended that the V_{DD} , V_{BB} , and V_{SS} supply lines be

gridded both horizontally and vertically at each device in the array. This technique allows use of double-sided circuit boards with noise performance equal to or better than multi-layered circuit boards.



DECOUPLING CAPACITORS

D = $0.1 \mu\text{F}$ to V_{DD} TO V_{SS}

B = $0.1 \mu\text{F}$ V_{BB} TO V_{SS}

C = $0.01 \mu\text{F}$ V_{CC} TO V_{SS}