

Legend BP1525 Large Sealed Bass Guitar or PA

By Jerry McNutt, Eminence Speaker LLC

100 Watts, F3 at 54 Hz

Run full range for Bass Guitar or High Pass at 60 Hz for PA



Box Properties

--Description--

Name:

Type: Closed Box

Shape: Prism, square

--Box Parameters--

Vb = 4.915 cu.ft

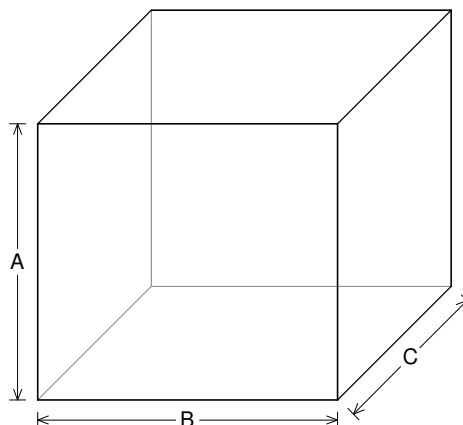
V(total) = 5.107 cu.ft

Qtc = 0.805

QL = 20

F3 = 54.27 Hz

Fill = normal



--External Dimensions--

A = 23.5 in

B = 25.5 in

C = 18.21 in

--Internal Dimensions--

A = 22 in

B = 24 in

C = 16.71 in

--Wall Thickness--

Front = 0.75 in

Side = 0.75 in

Driver Properties

--Description--

Name: Legend BP1525

Type: Standard one-way driver

Company: Eminence Speaker LLC USA

Comment: 15" Bass Guitar/PA Woofer

--Configuration--

No. of Drivers = 1

--Mechanical Parameters--

Fs = 31.53 Hz

Qms = 11.21

Vas = 397 liters

Cms = 0.39 mm/N

Mms = 65.02 g

Rms = 1.15 kg/s

Xmax = 6.2 mm

Xmech = 14.3 mm

P-Dia = 328.3 mm

Sd = 856.3 sq.cm

P-Vd = 0.525 liters

--Electrical Parameters--

Qes = 0.5

Re = 6.65 ohms

Le = 1.12 mH

Z = 8 ohms

BL = 13.07 Tm

Pe = 350 watts

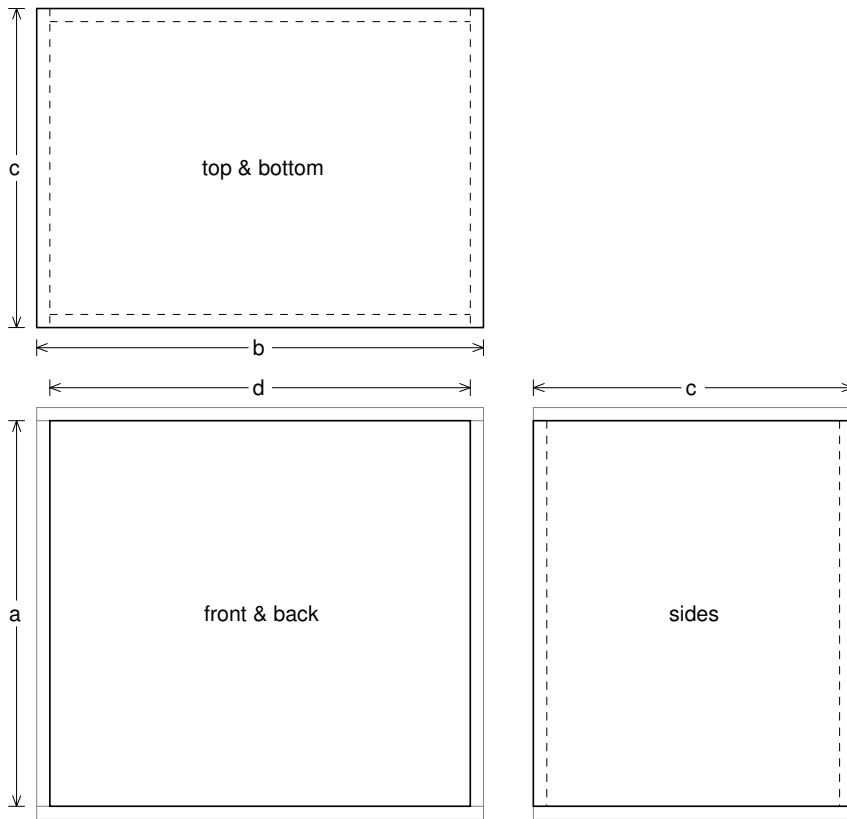
--Electromech. Parameters--

Qts = 0.48

no = 2.4 %

1-W SPL = 95.95 dB

2.83-V SPL = 96.75 dB



Box Parts

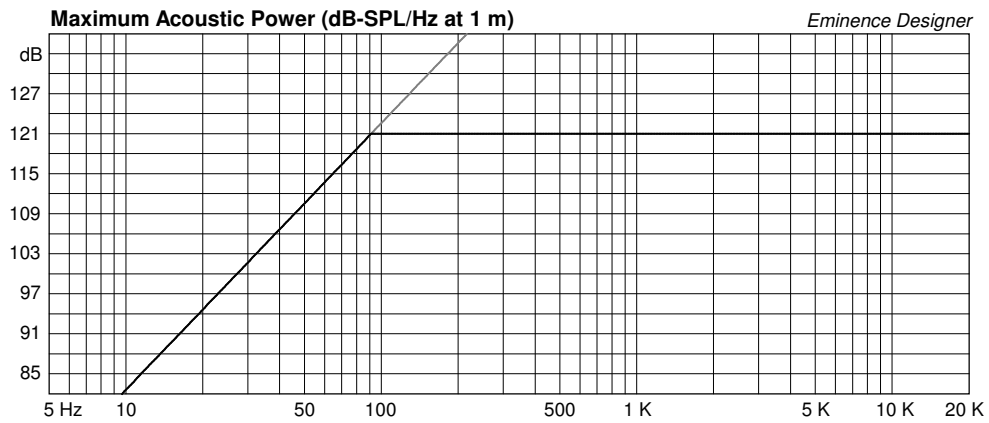
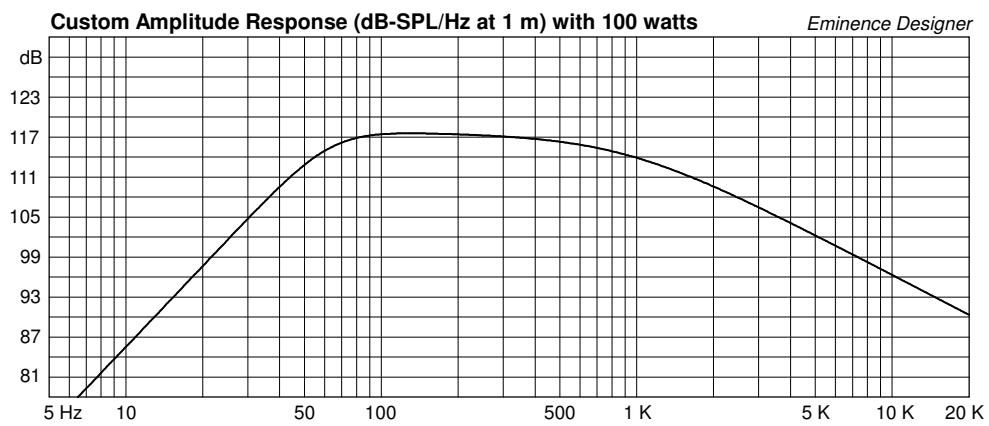
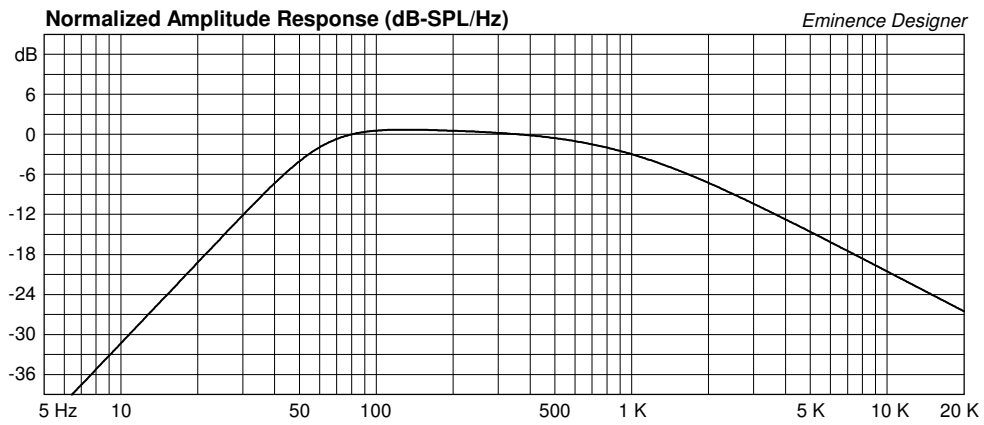
Box Shape: Square Prism

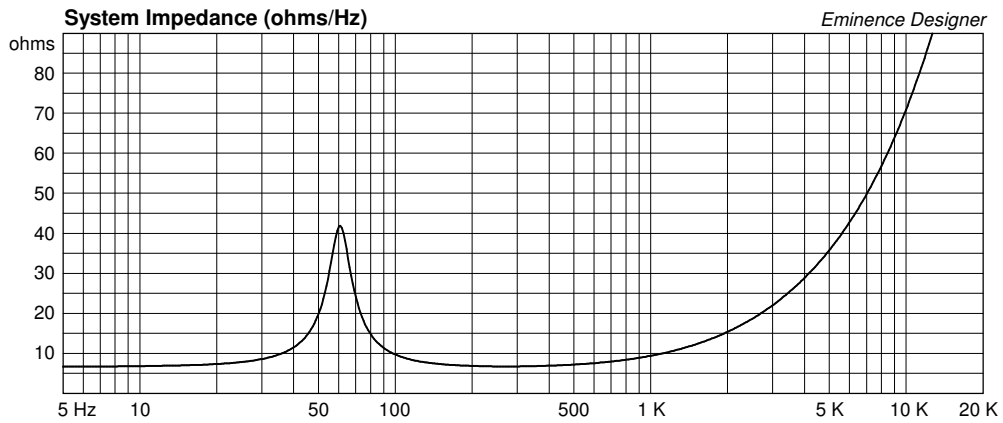
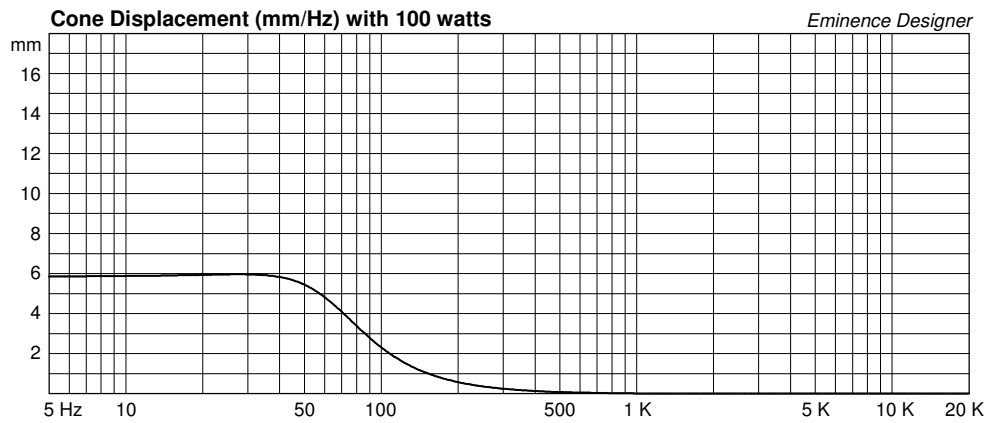
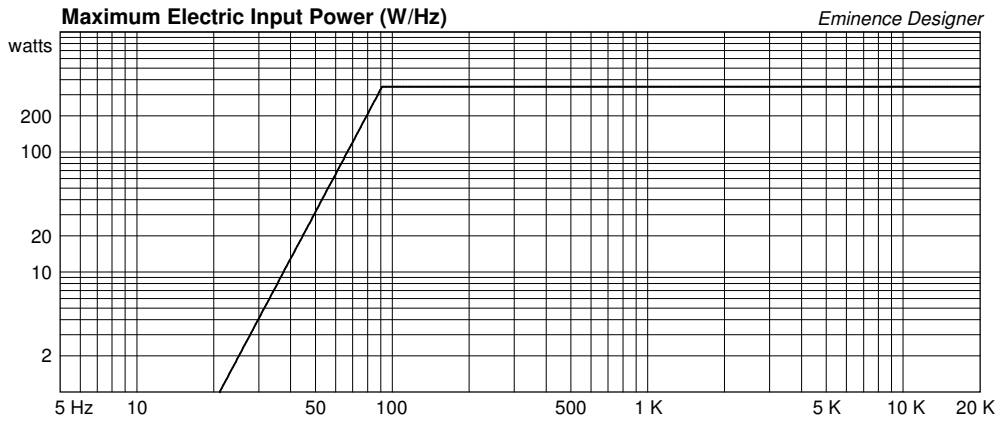
1 Top, 1 Bottom: depth (c) = 18.21 in
width (b) = 25.5, thickness = 0.75 in

1 Front, 1 Back: height (a) = 22 in
width (d) = 24, thickness = 0.75 in

2 Sides: height (a) = 22 in
depth (c) = 18.21, thickness = 0.75 in

--Driver Mounting--
Mounting: Flush





Legend BP1525 Large Vented Bass Guitar or PA

By Jerry McNutt, Eminence Speaker LLC

200 Watts, F3 at 44 Hz.

Run full range for Bass Guitar or High Pass at 35 Hz for PA, DJ, or Pro-Sound



Box Properties

--Description--

Name:

Type: Vented Box

Shape: Prism, square (optimum)

--Box Parameters--

Vb = 6 cu.ft

V(total) = 6.218 cu.ft

Fb = 40 Hz

QL = 7

F3 = 43.96 Hz

Fill = normal

--Vents--

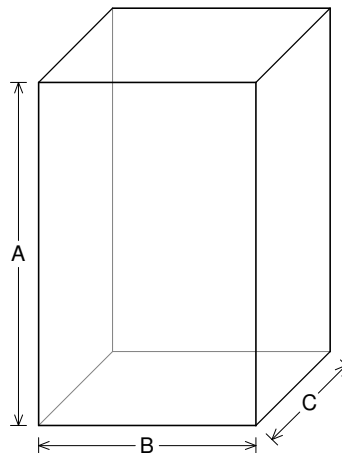
No. of Vents = 2

Vent shape = round

Vent ends = one flush

Dv = 4 in

Lv = 2.31 in



--External Dimensions--

A = 37.2 in

B = 23.57 in

C = 15.14 in

--Internal Dimensions--

A = 35.7 in

B = 22.07 in

C = 13.64 in

--Wall Thickness--

Front = 0.75 in

Side = 0.75 in

Driver Properties

--Description--

Name: Legend BP1525

Type: Standard one-way driver

Company: Eminence Speaker LLC USA

Comment: 15" Bass Guitar/PA Woofer

--Configuration--

No. of Drivers = 1

--Mechanical Parameters--

Fs = 31.53 Hz

Qms = 11.21

Vas = 397 liters

Cms = 0.39 mm/N

Mms = 65.02 g

Rms = 1.15 kg/s

Xmax = 6.2 mm

Xmech = 14.3 mm

P-Dia = 328.3 mm

Sd = 856.3 sq.cm

P-Vd = 0.525 liters

--Electrical Parameters--

Qes = 0.5

Re = 6.65 ohms

Le = 1.12 mH

Z = 8 ohms

BL = 13.07 Tm

Pe = 350 watts

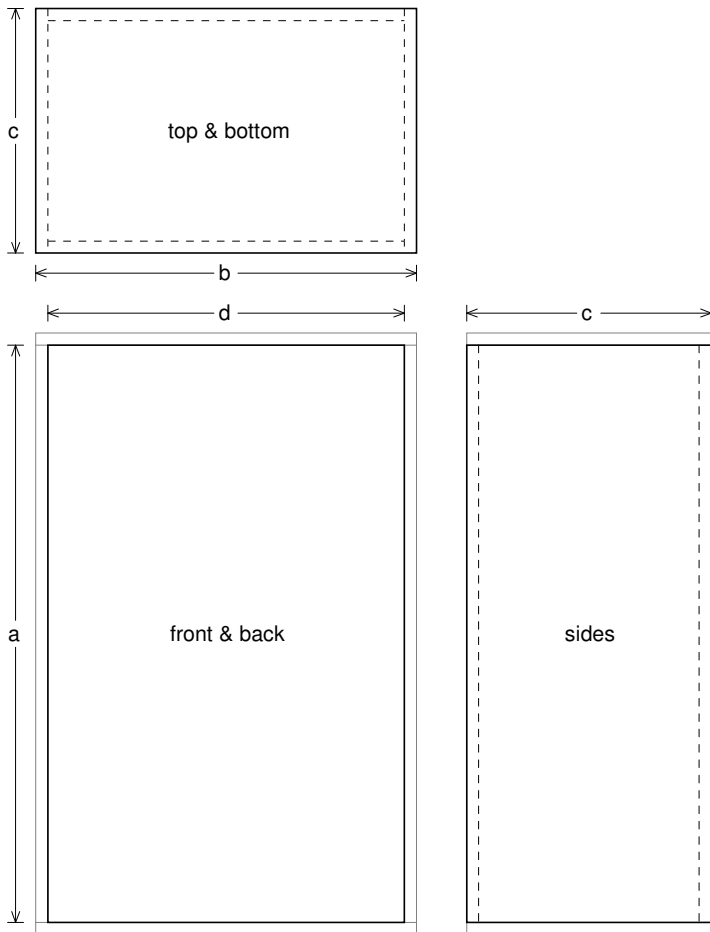
--Electromech. Parameters--

Qts = 0.48

no = 2.4 %

1-W SPL = 95.95 dB

2.83-V SPL = 96.75 dB



Box Parts

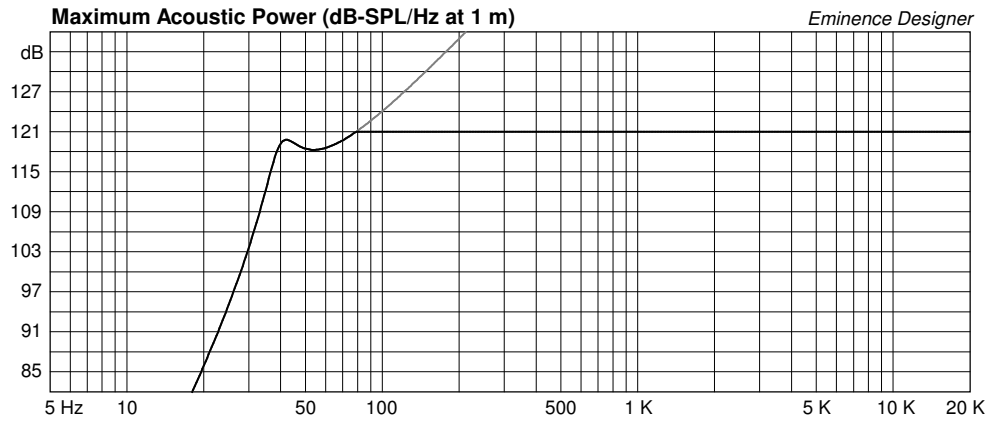
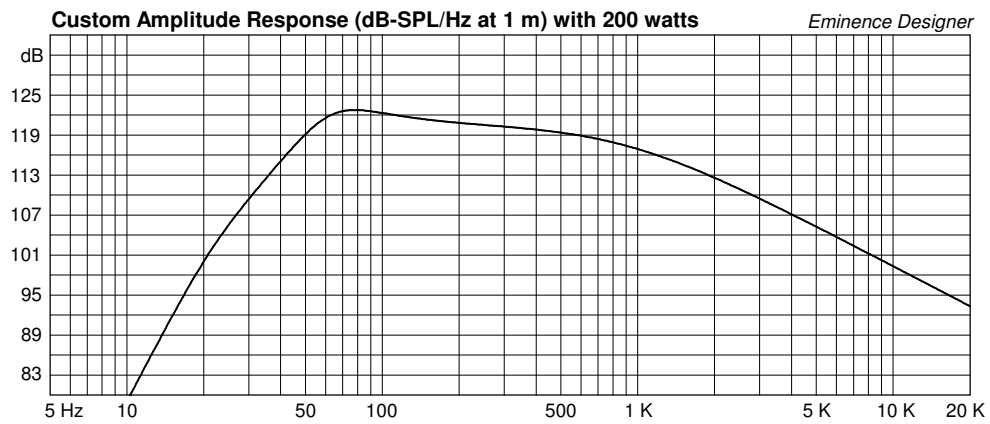
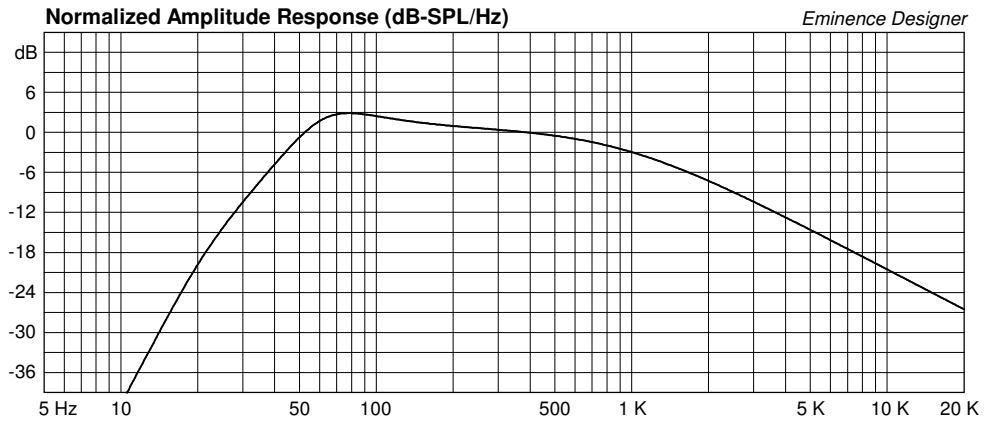
Box Shape: Optimum Square Prism
1 Top, 1 Bottom: depth (c) = 15.14 in
width (b) = 23.57, thickness = 0.75 in
1 Front, 1 Back: height (a) = 35.7 in
width (d) = 22.07, thickness = 0.75 in
2 Sides: height (a) = 35.7 in
depth (c) = 15.14, thickness = 0.75 in

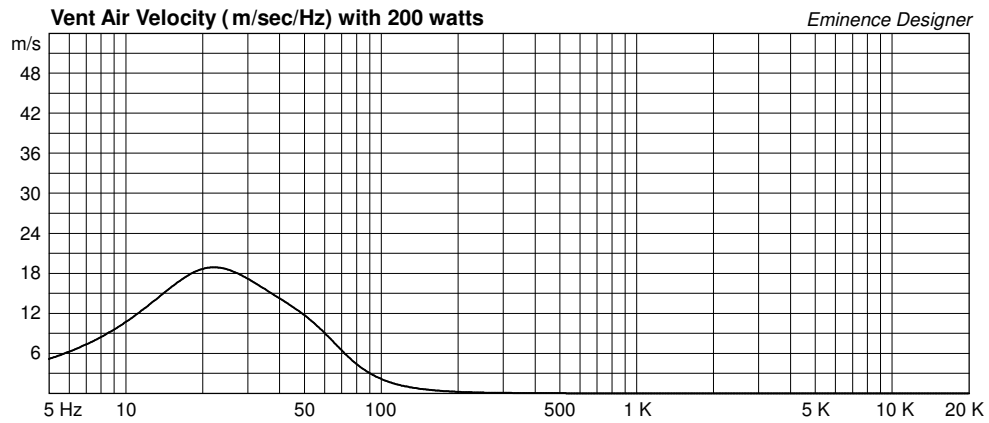
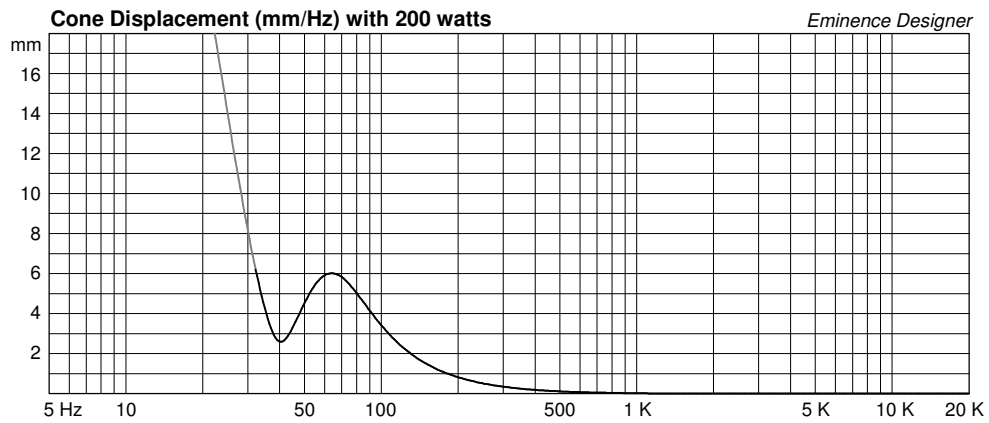
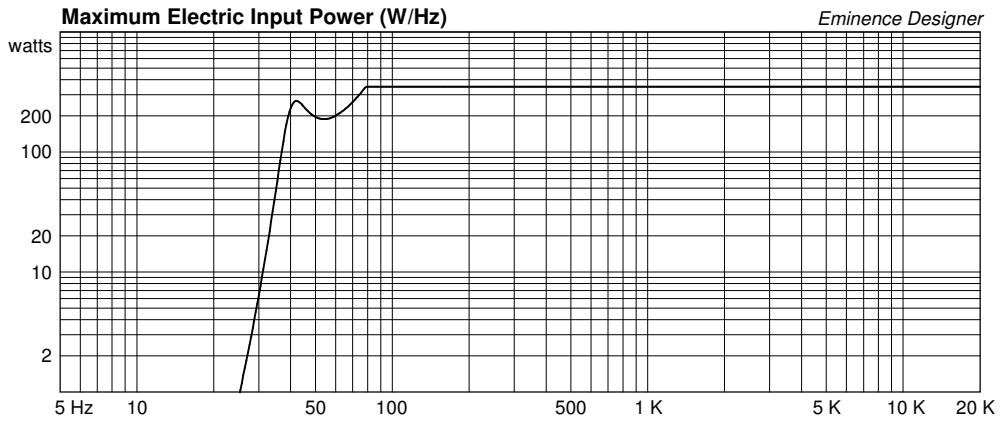
--Vent Parts--

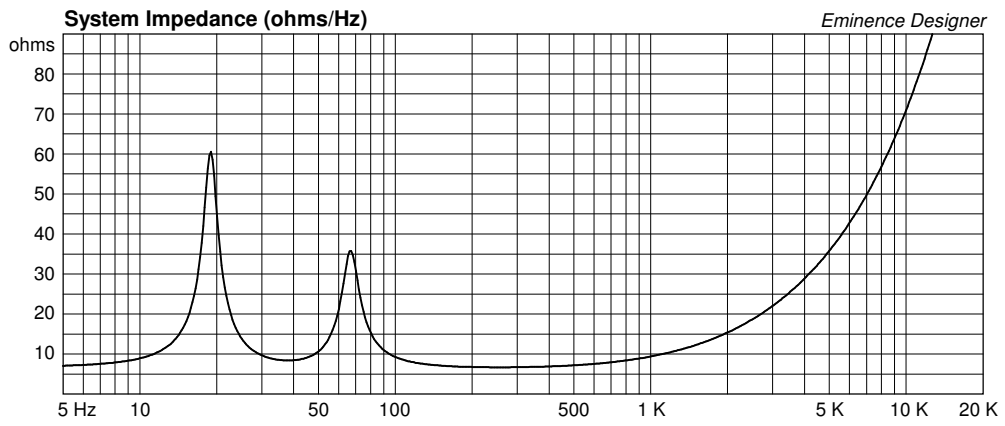
2 Ducts: outside diameter (e) = 4.25 in
inside diameter (g) = 4 in
length (h) = 2.31 in

--Driver Mounting--

Mounting: Flush







Legend BP1525 Medium Sealed Bass Guitar or PA

By Jerry McNutt, Eminence Speaker LLC

200 Watts, F3 at 61 Hz

Run full range for Bass Guitar or High pass at 70 Hz for PA



Box Properties

--Description--

Name:

Type: Closed Box

Shape: Prism, square

--Box Parameters--

Vb = 2.75 cu.ft

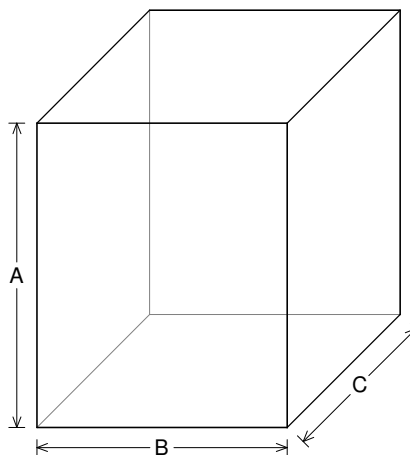
V(total) = 2.942 cu.ft

Qtc = 0.979

QL = 20

F3 = 60.95 Hz

Fill = normal



--External Dimensions--

A = 22.5 in

B = 18.5 in

C = 15.74 in

--Internal Dimensions--

A = 21 in

B = 17 in

C = 14.24 in

--Wall Thickness--

Front = 0.75 in

Side = 0.75 in

Driver Properties

--Description--

Name: Legend BP1525

Type: Standard one-way driver

Company: Eminence Speaker LLC USA

Comment: 15" Bass Guitar/PA Woofer

--Configuration--

No. of Drivers = 1

--Mechanical Parameters--

Fs = 31.53 Hz

Qms = 11.21

Vas = 397 liters

Cms = 0.39 mm/N

Mms = 65.02 g

Rms = 1.15 kg/s

Xmax = 6.2 mm

Xmech = 14.3 mm

P-Dia = 328.3 mm

Sd = 856.3 sq.cm

P-Vd = 0.525 liters

--Electrical Parameters--

Qes = 0.5

Re = 6.65 ohms

Le = 1.12 mH

Z = 8 ohms

BL = 13.07 Tm

Pe = 350 watts

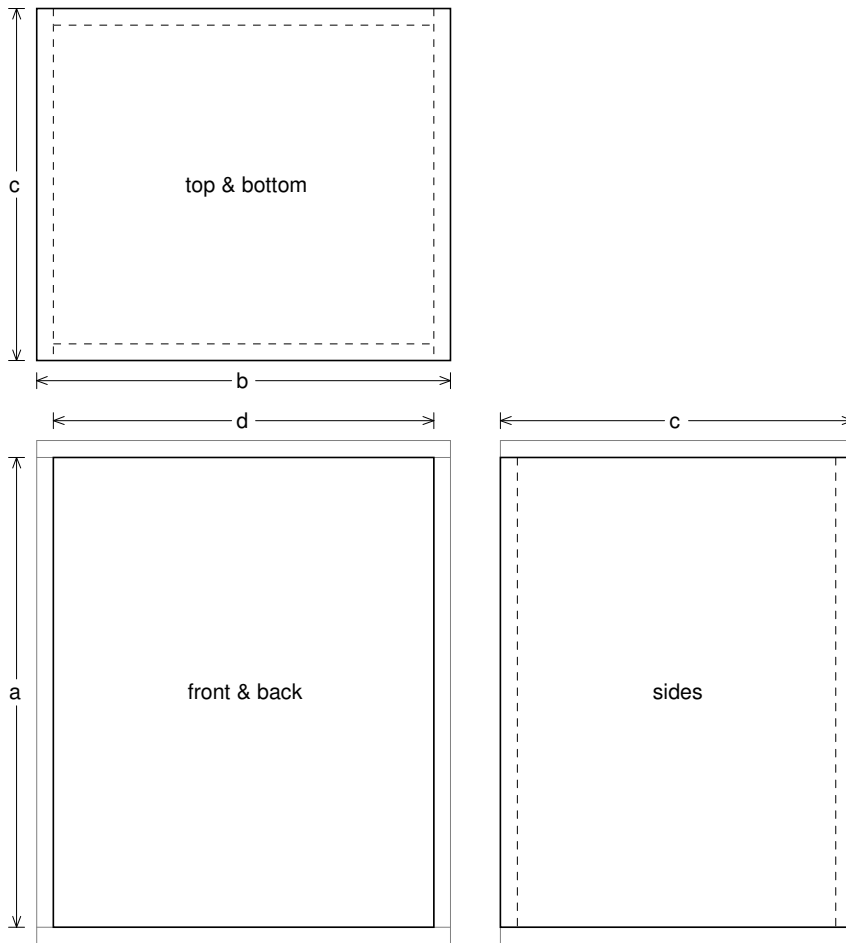
--Electromech. Parameters--

Qts = 0.48

no = 2.4 %

1-W SPL = 95.95 dB

2.83-V SPL = 96.75 dB



Box Parts

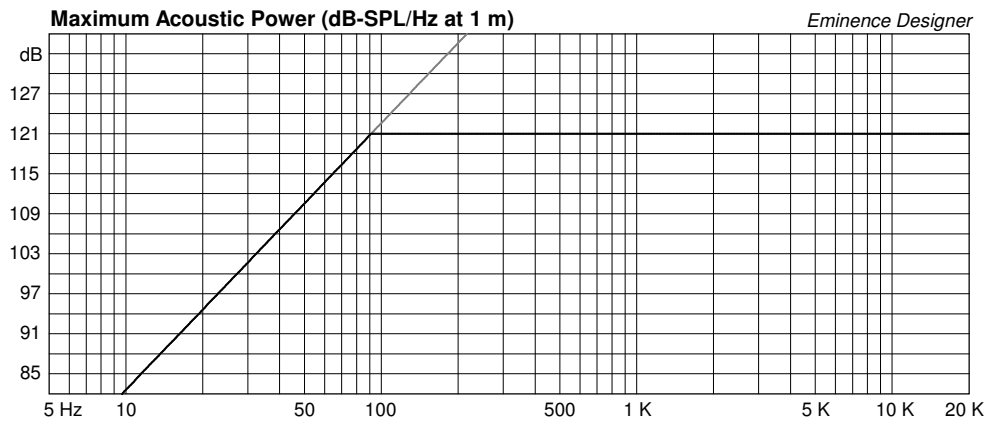
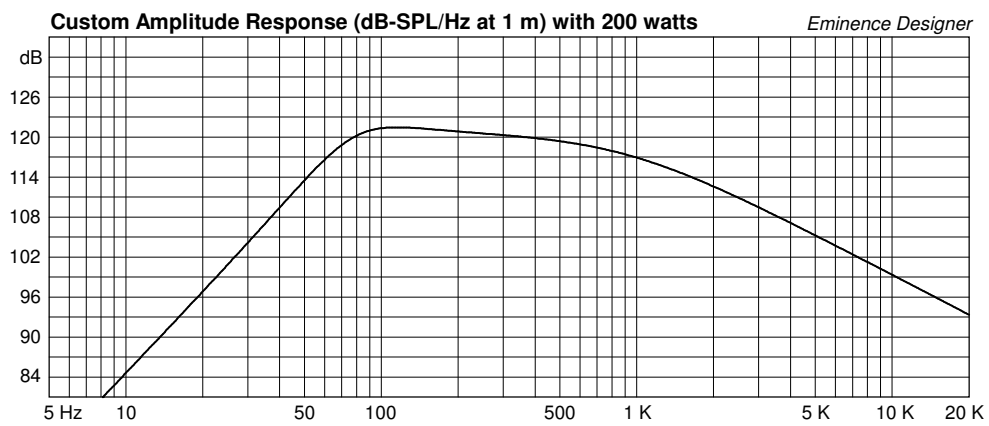
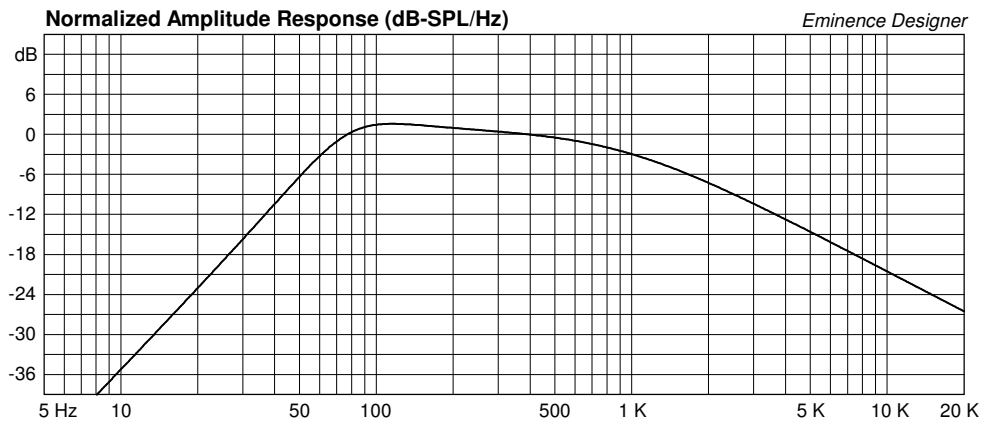
Box Shape: Square Prism

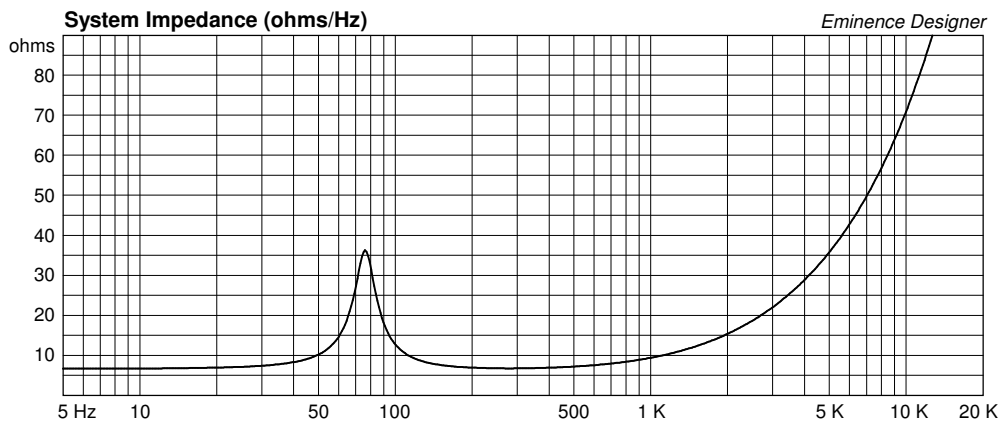
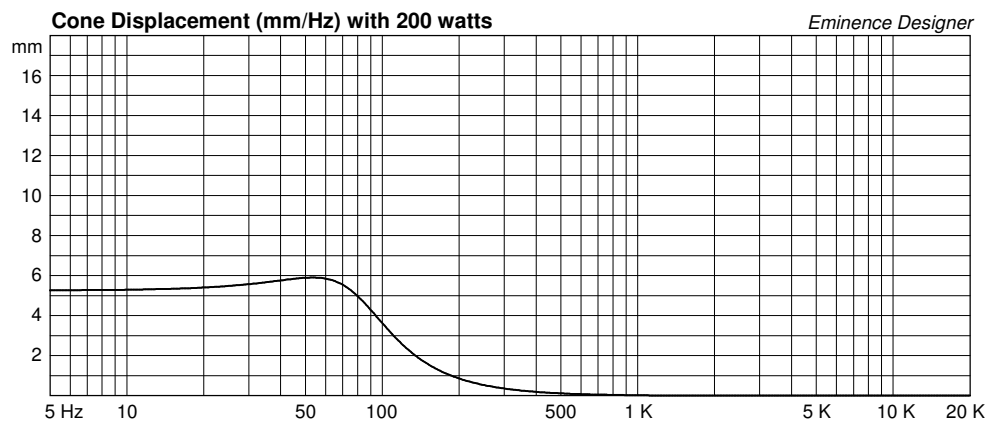
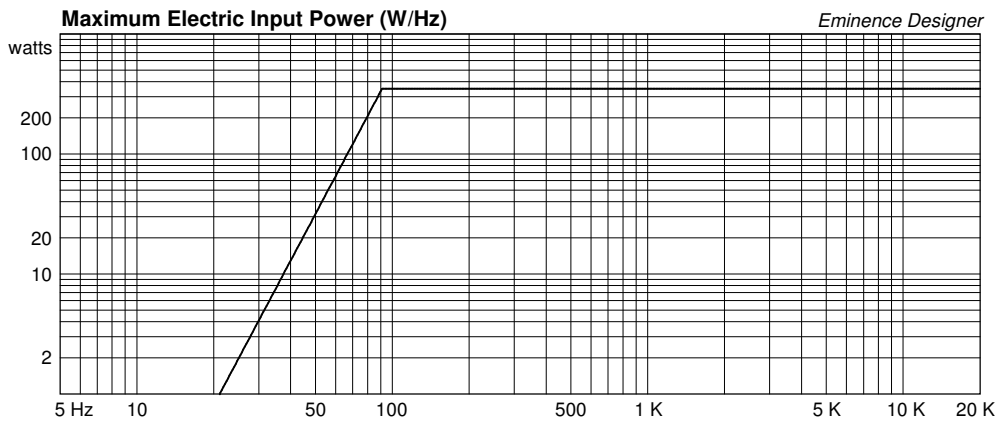
1 Top, 1 Bottom: depth (c) = 15.74 in
width (b) = 18.5, thickness = 0.75 in

1 Front, 1 Back: height (a) = 21 in
width (d) = 17, thickness = 0.75 in

2 Sides: height (a) = 21 in
depth (c) = 15.74, thickness = 0.75 in

--Driver Mounting--
Mounting: Flush





Legend BP1525 Medium Vented Bass Guitar or PA

By Jerry McNutt, Eminence Speaker LLC

250 Watts, F3 at 49 Hz.

Run full range for Bass Guitar or High Pass at 35 Hz for PA, DJ, or Pro-Sound



Box Properties

--Description--

Name:

Type: Vented Box

Shape: Prism, square (optimum)

--Box Parameters--

Vb = 4.6 cu.ft

V(total) = 4.839 cu.ft

Fb = 42 Hz

QL = 7

F3 = 48.67 Hz

Fill = normal

--Vents--

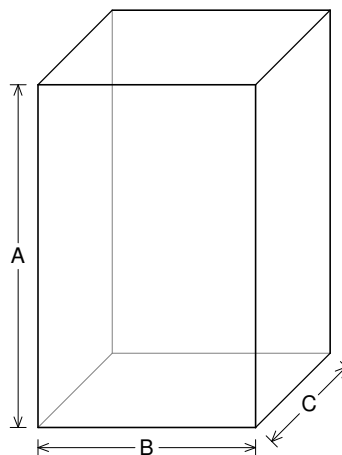
No. of Vents = 2

Vent shape = round

Vent ends = one flush

Dv = 4 in

Lv = 3.603 in



--External Dimensions--

A = 34.34 in

B = 21.8 in

C = 14.04 in

--Internal Dimensions--

A = 32.84 in

B = 20.3 in

C = 12.54 in

--Wall Thickness--

Front = 0.75 in

Side = 0.75 in

Driver Properties

--Description--

Name: Legend BP1525

Type: Standard one-way driver

Company: Eminence Speaker LLC USA

Comment: 15" Bass Guitar/PA Woofer

--Configuration--

No. of Drivers = 1

--Mechanical Parameters--

Fs = 31.53 Hz

Qms = 11.21

Vas = 397 liters

Cms = 0.39 mm/N

Mms = 65.02 g

Rms = 1.15 kg/s

Xmax = 6.2 mm

Xmech = 14.3 mm

P-Dia = 328.3 mm

Sd = 856.3 sq.cm

P-Vd = 0.525 liters

--Electrical Parameters--

Qes = 0.5

Re = 6.65 ohms

Le = 1.12 mH

Z = 8 ohms

BL = 13.07 Tm

Pe = 350 watts

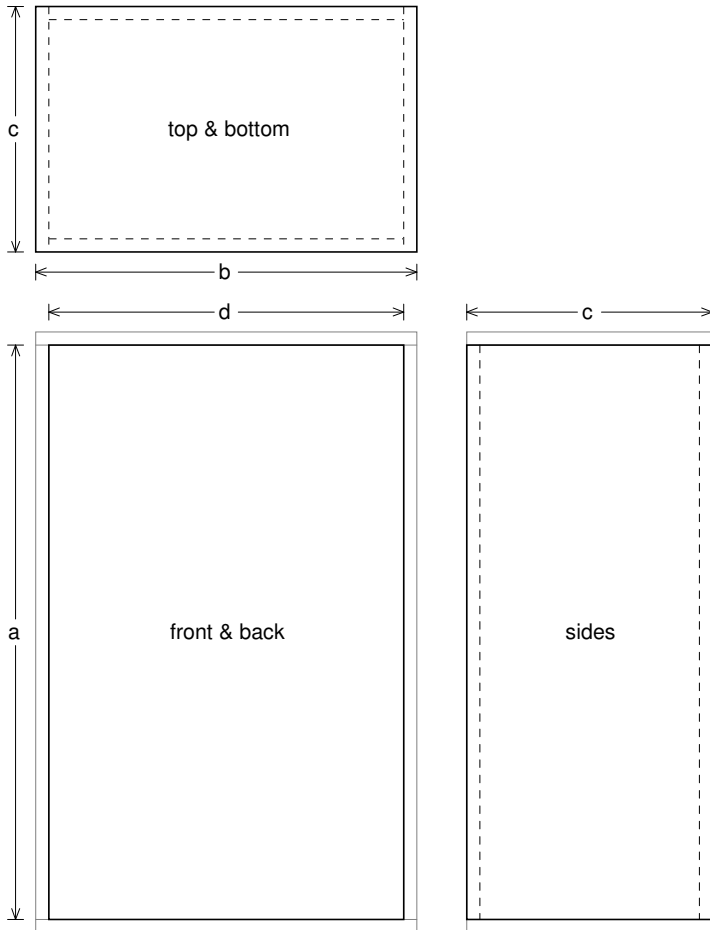
--Electromech. Parameters--

Qts = 0.48

no = 2.4 %

1-W SPL = 95.95 dB

2.83-V SPL = 96.75 dB



Box Parts

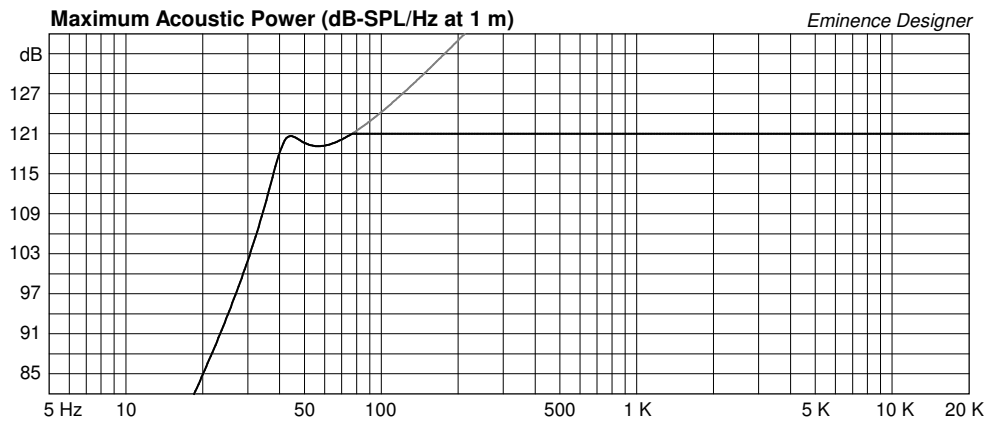
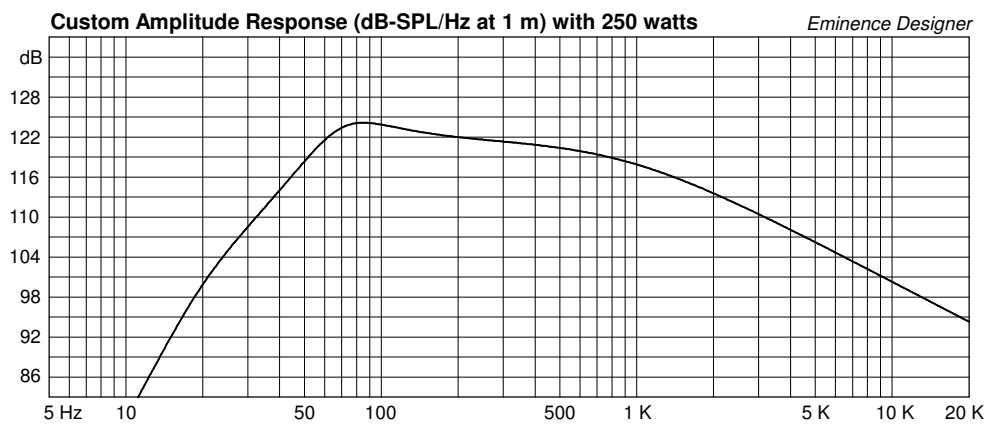
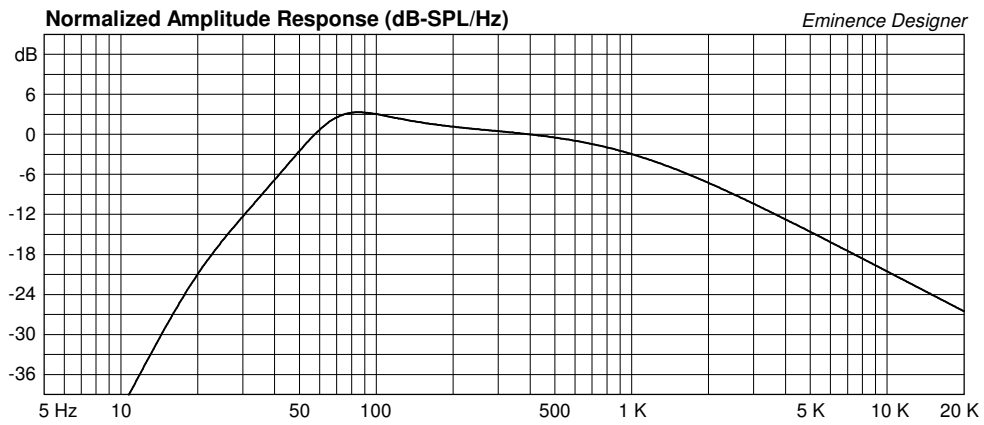
Box Shape: Optimum Square Prism
1 Top, 1 Bottom: depth (c) = 14.04 in
width (b) = 21.8, thickness = 0.75 in
1 Front, 1 Back: height (a) = 32.84 in
width (d) = 20.3, thickness = 0.75 in
2 Sides: height (a) = 32.84 in
depth (c) = 14.04, thickness = 0.75 in

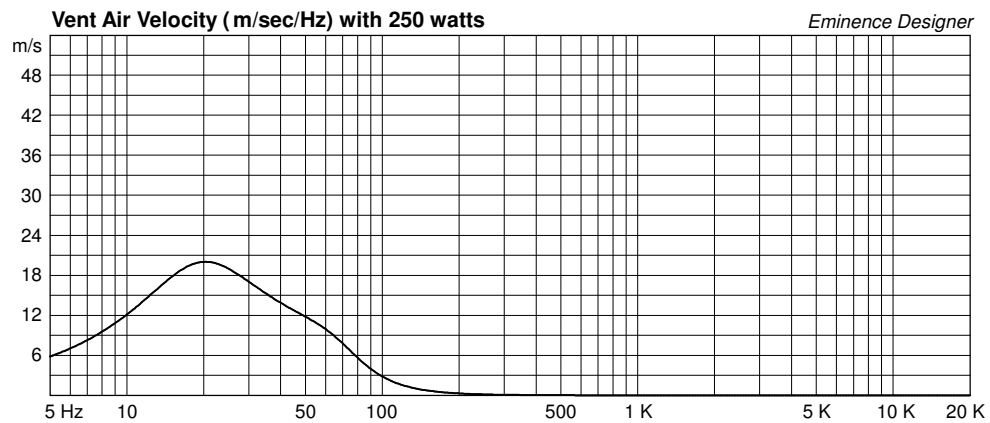
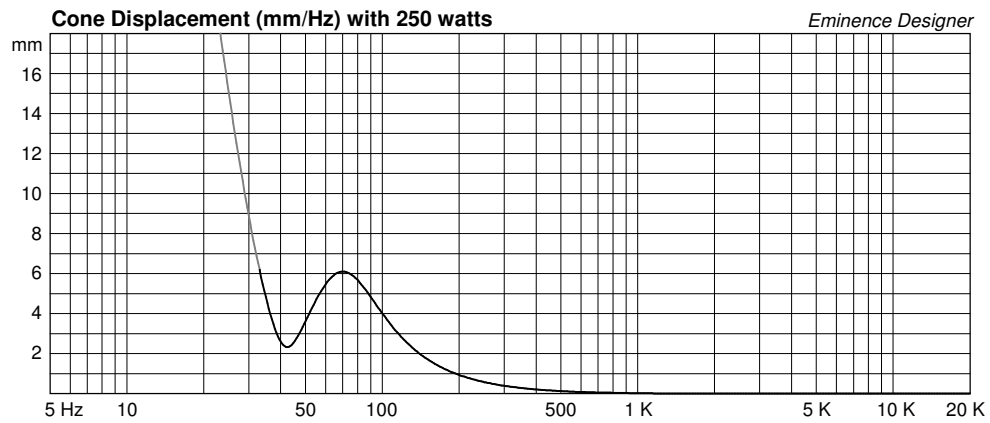
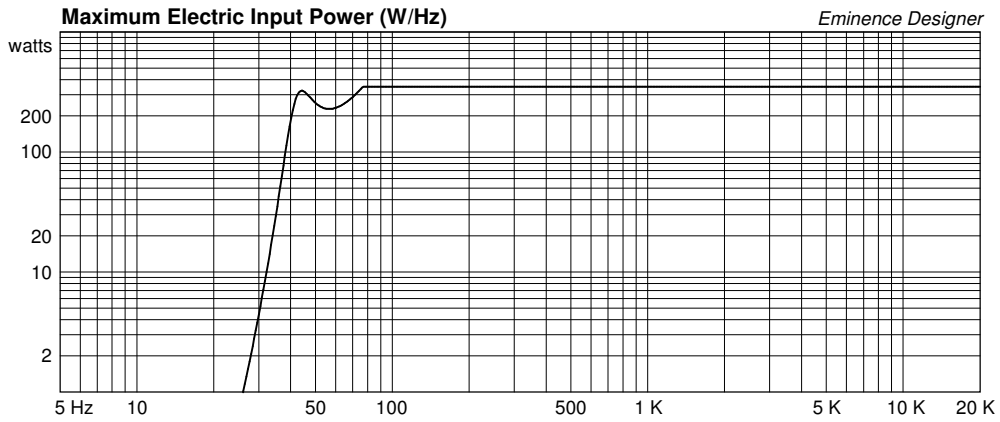
--Vent Parts--

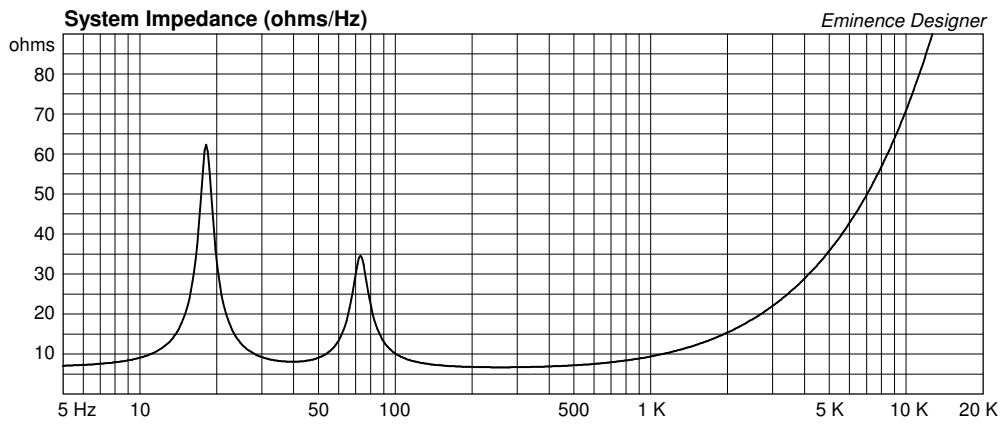
2 Ducts: outside diameter (e) = 4.25 in
inside diameter (g) = 4 in
length (h) = 3.603 in

--Driver Mounting--

Mounting: Flush







Legend BP1525 Small Sealed Bass Guitar or PA

By Jerry McNutt, Eminence Speaker LLC

350 Watts, F3 at 71 Hz.

Run full range for Bass Guitar or High pass at 80 Hz for PA top use.



Box Properties

--Description--

Name:

Type: Closed Box

Shape: Prism, square

--Box Parameters--

Vb = 1.629 cu.ft

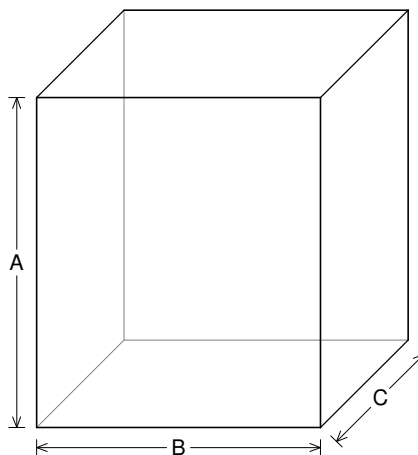
V(total) = 1.821 cu.ft

Qtc = 1.183

QL = 20

F3 = 71.36 Hz

Fill = normal



--External Dimensions--

A = 21.5 in

B = 18.5 in

C = 10.75 in

--Internal Dimensions--

A = 20 in

B = 17 in

C = 9.254 in

--Wall Thickness--

Front = 0.75 in

Side = 0.75 in

Driver Properties

--Description--

Name: Legend BP1525

Type: Standard one-way driver

Company: Eminence Speaker LLC USA

Comment: 15" Bass Guitar/PA Woofer

--Configuration--

No. of Drivers = 1

--Mechanical Parameters--

Fs = 31.53 Hz

Qms = 11.21

Vas = 397 liters

Cms = 0.39 mm/N

Mms = 65.02 g

Rms = 1.15 kg/s

Xmax = 6.2 mm

Xmech = 14.3 mm

P-Dia = 328.3 mm

Sd = 856.3 sq.cm

P-Vd = 0.525 liters

--Electrical Parameters--

Qes = 0.5

Re = 6.65 ohms

Le = 1.12 mH

Z = 8 ohms

BL = 13.07 Tm

Pe = 350 watts

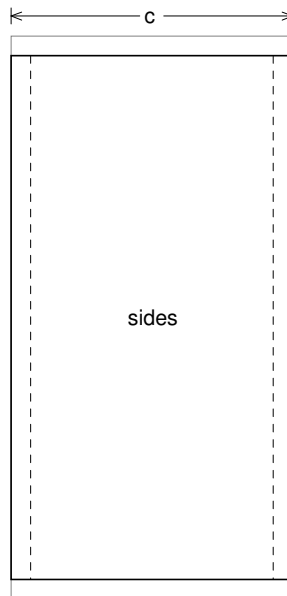
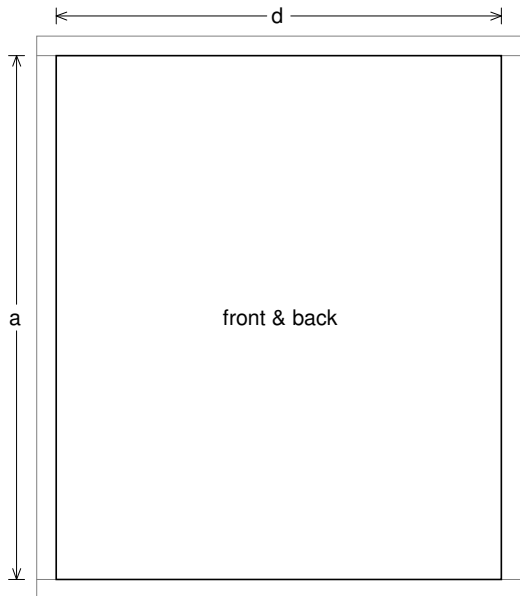
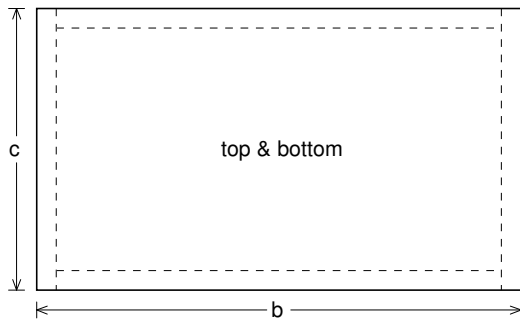
--Electromech. Parameters--

Qts = 0.48

no = 2.4 %

1-W SPL = 95.95 dB

2.83-V SPL = 96.75 dB



Box Parts

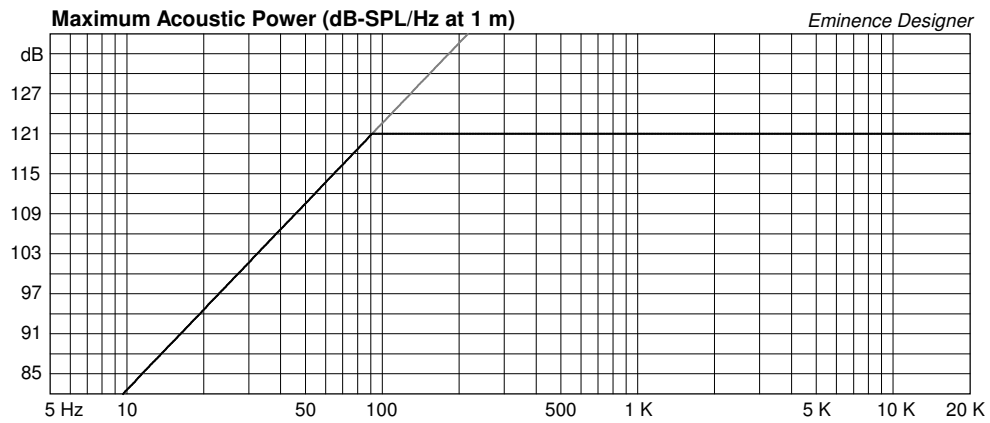
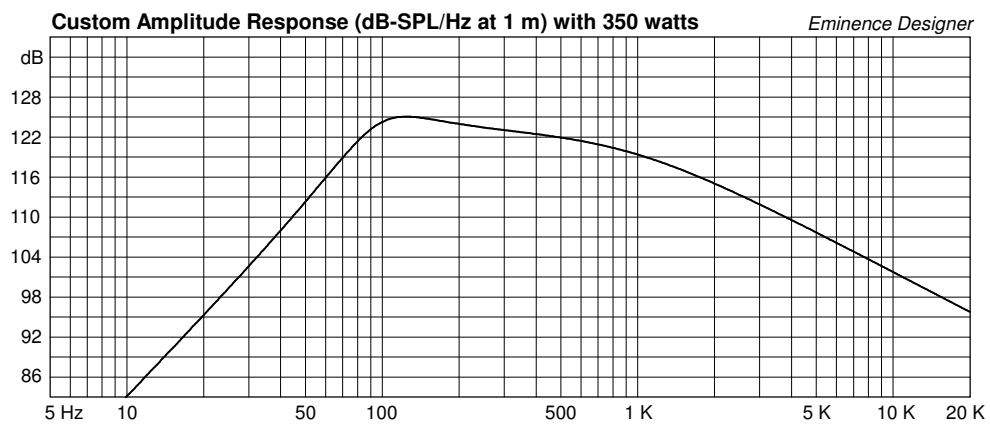
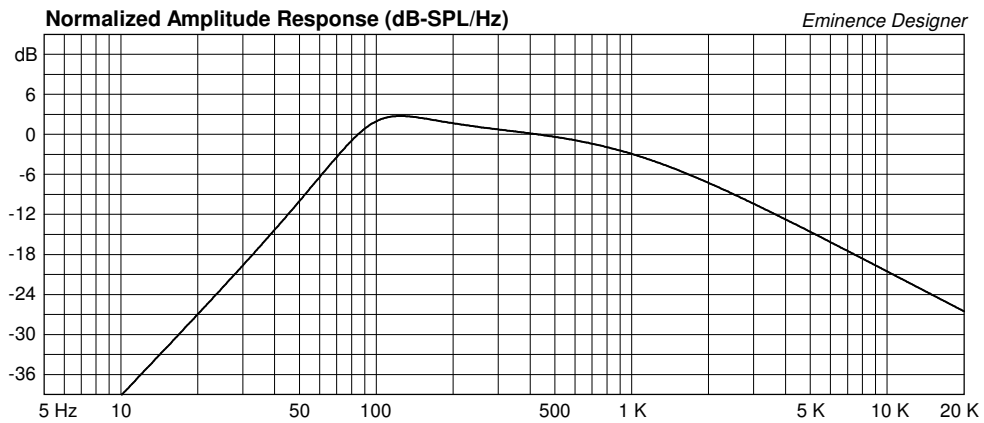
Box Shape: Square Prism

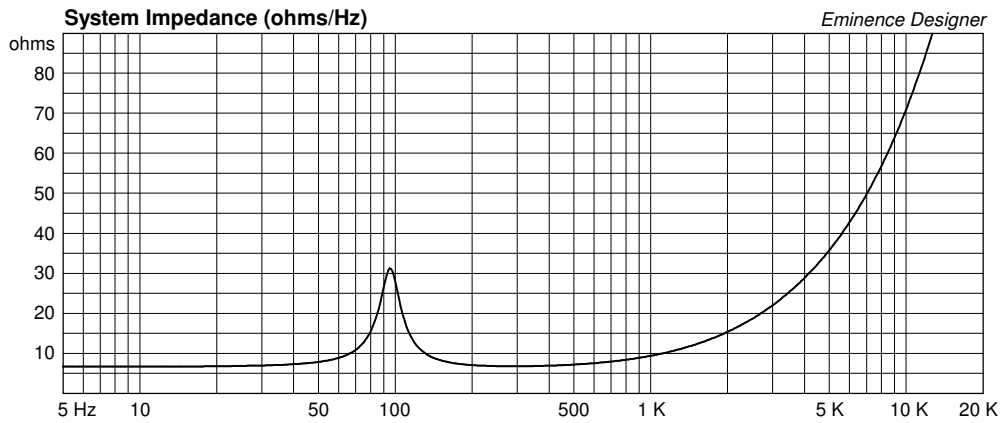
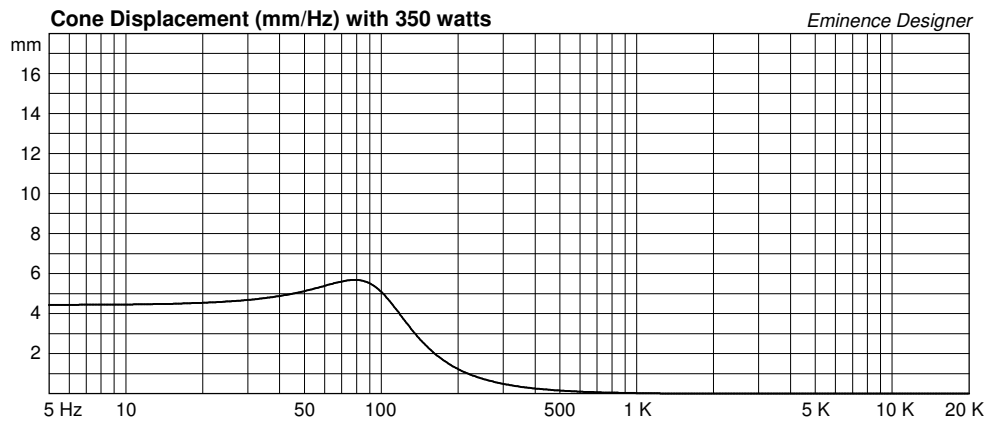
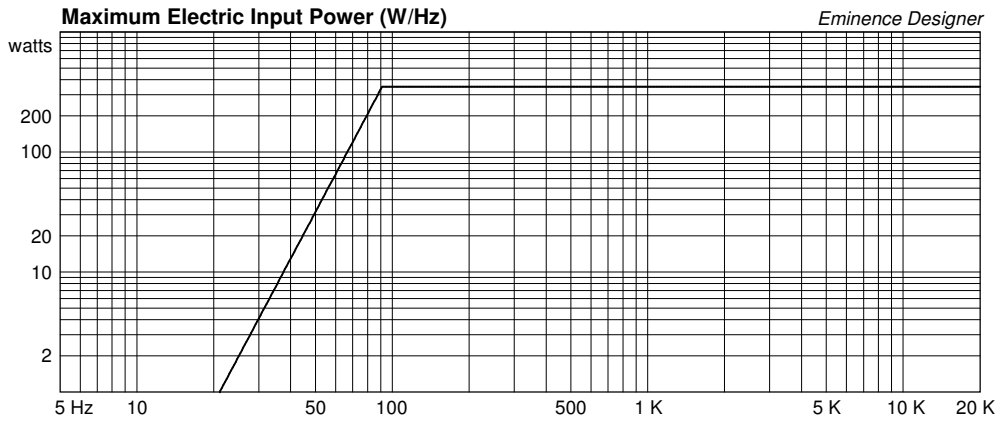
1 Top, 1 Bottom: depth (c) = 10.75 in
width (b) = 18.5, thickness = 0.75 in

1 Front, 1 Back: height (a) = 20 in
width (d) = 17, thickness = 0.75 in

2 Sides: height (a) = 20 in
depth (c) = 10.75, thickness = 0.75 in

--Driver Mounting--
Mounting: Flush





Legend BP1525 Small Vented Bass Guitar or PA

By Jerry McNutt, Eminence Speaker LLC

350 Watts, F3 at 54 Hz.

Run full range for Bass Guitar or High Pass at 40 Hz for PA, DJ, or Pro-Sound



Box Properties

--Description--

Name:

Type: Vented Box

Shape: Prism, square (optimum)

--Box Parameters--

Vb = 3.8 cu.ft

V(total) = 4.019 cu.ft

Fb = 50 Hz

QL = 7

F3 = 53.59 Hz

Fill = normal

--Vents--

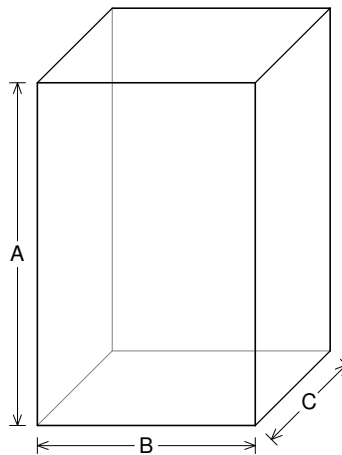
No. of Vents = 2

Vent shape = round

Vent ends = one flush

Dv = 4 in

Lv = 2.384 in



--External Dimensions--

A = 32.37 in

B = 20.58 in

C = 13.29 in

--Internal Dimensions--

A = 30.87 in

B = 19.08 in

C = 11.79 in

--Wall Thickness--

Front = 0.75 in

Side = 0.75 in

Driver Properties

--Description--

Name: Legend BP1525

Type: Standard one-way driver

Company: Eminence Speaker LLC USA

Comment: 15" Bass Guitar/PA Woofer

--Configuration--

No. of Drivers = 1

--Mechanical Parameters--

Fs = 31.53 Hz

Qms = 11.21

Vas = 397 liters

Cms = 0.39 mm/N

Mms = 65.02 g

Rms = 1.15 kg/s

Xmax = 6.2 mm

Xmech = 14.3 mm

P-Dia = 328.3 mm

Sd = 856.3 sq.cm

P-Vd = 0.525 liters

--Electrical Parameters--

Qes = 0.5

Re = 6.65 ohms

Le = 1.12 mH

Z = 8 ohms

BL = 13.07 Tm

Pe = 350 watts

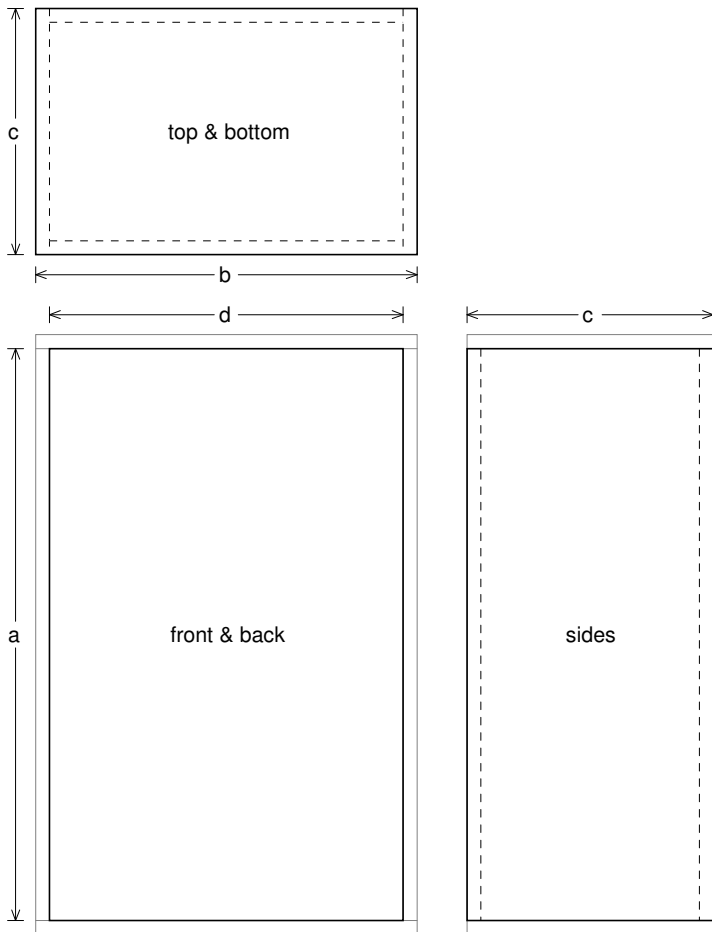
--Electromech. Parameters--

Qts = 0.48

no = 2.4 %

1-W SPL = 95.95 dB

2.83-V SPL = 96.75 dB



Box Parts

Box Shape: Optimum Square Prism
1 Top, 1 Bottom: depth (c) = 13.29 in
width (b) = 20.58, thickness = 0.75 in
1 Front, 1 Back: height (a) = 30.87 in
width (d) = 19.08, thickness = 0.75 in
2 Sides: height (a) = 30.87 in
depth (c) = 13.29, thickness = 0.75 in

--Vent Parts--

2 Ducts: outside diameter (e) = 4.25 in
inside diameter (g) = 4 in
length (h) = 2.384 in

--Driver Mounting--

Mounting: Flush

